

Four
bedroom
home.

The Florence

(Detached)

The Florence is a four-bedroom home which is ideal for families. To the ground floor there is a spacious living room overlooking the front of the home, an open plan kitchen/dining space, a W.C. plus a handy utility area. To the first floor, you will find the master bedroom with en-suite shower room, three further bedrooms and a family bathroom. This home also benefits from an integral garage with driveway and a rear garden.



karbon
living

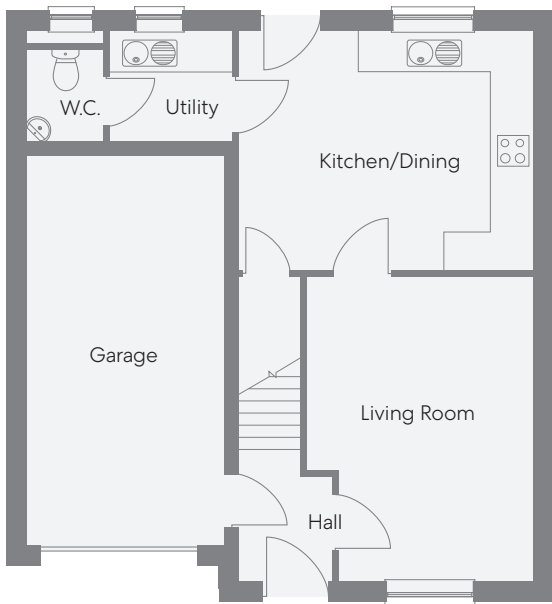
Homes for you to rent or buy.

For more information, please contact us at:

salesandlettings@karbonhomes.co.uk | 0191 223 8749

or visit **[karbonhomes.co.uk](https://www.karbonhomes.co.uk)**

Images for illustration purposes only. Room sizes included have been measured from architect's plans and any furniture added is intended to give a general indication of the proposed floor layout only and does not form any part of contract.



Ground Floor:

Living Room

15' 2" x 11' 0"

Garage

19' 6" x 9' 10"

Kitchen/Dining

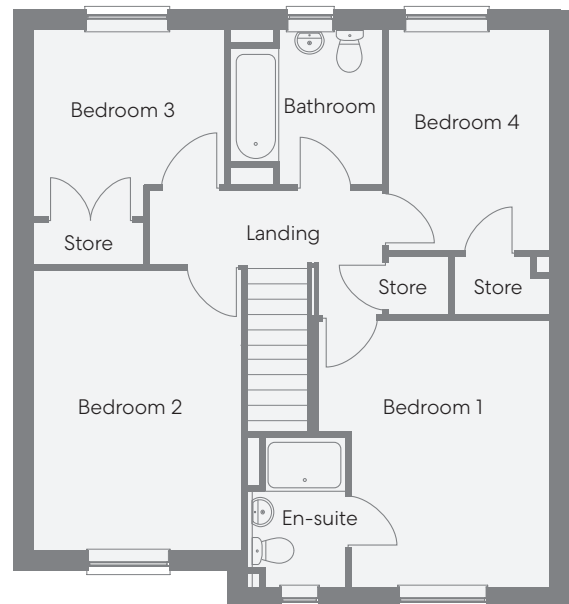
14' 7" x 11' 11"

Utility

6' 3" x 5' 5"

W.C.

5' 5" x 3' 8"



First Floor:

Bedroom 1

13' 2" x 11' 0"

Bathroom

7' 7" x 7' 6"

En-suite

7' 3" x 4' 7"

Bedroom 3

11' 5" x 9' 4"

Bedroom 2

13' 11" x 10' 0"

Bedroom 4

10' 9" x 7' 7"

karbon
living

Homes for you to rent or buy.

For more information, please contact us at:

salesandlettings@karbonhomes.co.uk | 0191 223 8749

or visit karbonhomes.co.uk