

THE LODGE ST. JOHNS LODGE

WOKING, GU21 7QX

£525,000
LEASEHOLD - SHARE OF
FREEHOLD

A beautifully unique and surprisingly spacious home, set within an exclusive development that includes part of the original 'Arts & Crafts' house.

Full of charm and character, this lovely period property was originally part of St John's Lodge, built in 1894, and has been thoughtfully converted and updated to offer stylish, comfortable living throughout. Tucked away in peaceful, south-facing communal grounds, it's just a short walk from the centre of St John's village.

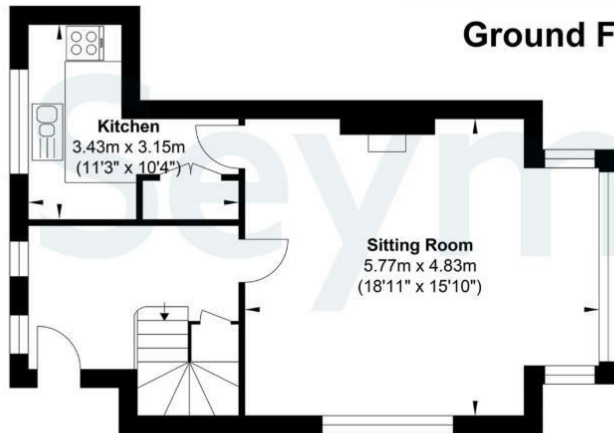
Set over three floors, the home offers two generous bedrooms and bright, welcoming living spaces with lovely views over the gardens. A garage is also available by separate negotiation.

WR

WYNDHAM ROW



Ground Floor

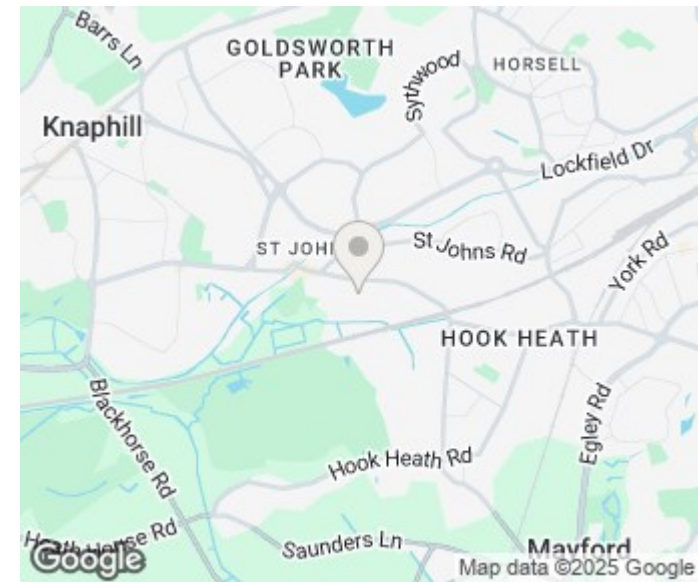


Ground Floor



First Floor

Gross Internal Floor Area : 95.1 m2 ... 1024.0 ft2



Energy Efficiency Rating		
	Current	Potential
Very energy efficient - lower running costs		
(92 plus) A		
(81-91) B		
(69-80) C		
(55-68) D		
(39-54) E		
(21-38) F		
(1-20) G		
Not energy efficient - higher running costs		
England & Wales	EU Directive 2002/91/EC	

Agents Note: Whilst every care has been taken to prepare these particulars, they are for guidance purposes only. All measurements are approximate and are for general guidance purposes only and whilst every care has been taken to ensure their accuracy, they should not be relied upon and potential buyers/tenants are advised to recheck the measurements

Wyndham Row Ltd
Upper Deck, Admirals Quarters
Portsmouth Road
Thames Ditton
Surrey
KT7 0XA

01932 508 000
office@wyndhamrow.co.uk
www.wyndhamrow.co.uk

WR
WYNDHAM ROW