



Thornbury Court  
Chepstow Villas, W11

CHESTERTONS









Set across the first and second floors of an elegant red brick building on Chepstow Villas, this beautifully presented three-bedroom apartment offers exceptional living space and natural light.

The first floor comprises a spacious main bedroom with excellent fitted storage, a second double bedroom, a generous family bathroom featuring both a walk-in shower and freestanding bath, and an additional shower room.

On the upper floor, the impressive reception room opens onto a private balcony, shared with a versatile third bedroom or dining room. A separate, fully fitted kitchen with adjoining utility room completes this elegant home.

Thornbury Court is a beautiful period mansion block with lift and porter on Chepstow Villas. Set in the Royal Borough of Kensington and Chelsea, it is well located for the many shops and restaurants of Westbourne Grove, Portobello Road, and Notting Hill Gate. Notting Hill Gate underground station (Central, District and Circle lines) is only 0.4 miles away.

- Bright reception room opening onto a private balcony
- Porter and lift
- Two double bedroom and large family bathroom with walk-in shower and freestanding bath
- Separate fully fitted kitchen with adjoining utility room

Asking Price  
£1,150,000

Score	Energy rating	Current	Potential
92+	A		
81-91	B		
69-80	C	71 C	79 C
55-68	D		
39-54	E		
21-38	F		
1-20	G		

**Tenure:** Leasehold. 955 years remaining with a Share of Freehold.

**Service Charge:** £1,3340 p.a. Paid half-yearly (including reserve fund contribution).

**Ground Rent:** £0

**Local Authority:** Kensington and Chelsea

**Council Tax Band:** G

*Chestertons Notting Hill Sales*

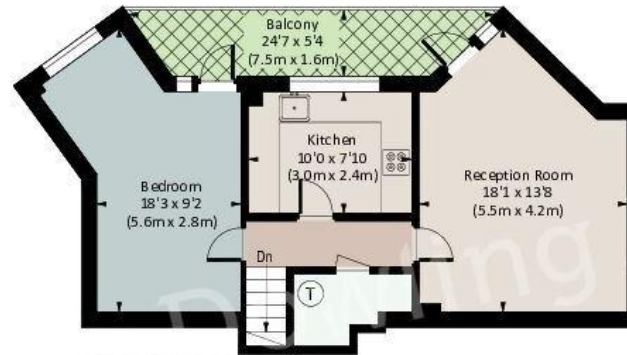
30 Ledbury Road  
Notting Hill  
London  
W11 2AB

[nottinghill@chestertons.co.uk](mailto:nottinghill@chestertons.co.uk)

0203 040 8585

[chestertons.co.uk](http://chestertons.co.uk)

**CHEPSTOW VILLAS , W11**  
Approximate Gross Internal Area  
109.4 sq m / 1177 sq ft.



**SECOND FLOOR**



**FIRST FLOOR**



All measurements have been made in accordance with RICS code of Measuring Practice which are approximate only and only for illustrative purposes. For the avoidance of doubt, Dowling Jones Design shall not be liable for any reliance on these measurements. © 2022 www.dowlingjones.com 020 7610 9933

Chesterton UK Services Limited trading as Chestertons for themselves and for the vendor of this property whose agents they are, give notice that (i) these particulars do not constitute any part of an offer or contract, (ii) all statements contained within these particulars are made without responsibility on the part of Chestertons or the vendor, (iii) whilst made in good faith, none of the statements contained within these particulars are to be relied upon as a statement or representation of fact, (iv) any intending purchasers must satisfy themselves by inspection or otherwise as to the correctness of each of the statements contained within these particulars, (v) the vendor does not make or give either Chestertons or any person in their employment any authority to make or give representation or warranty whatsoever in relation to this property. Wide angle lenses may be used. ©Copyright Chestertons | Chesterton UK Services Limited | Registered Office 40 Connaught Street, Hyde Park, London W2 2AB Registered Company Number 05334580.



This paper is  
100% recyclable