



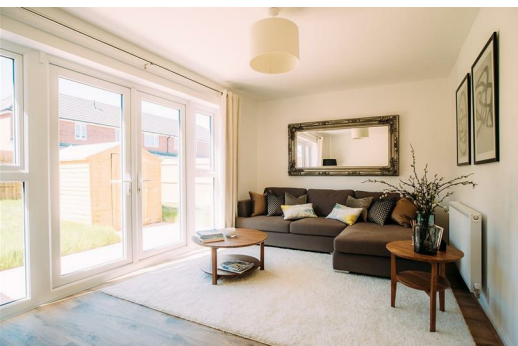
Heyfields, Worsley, M28

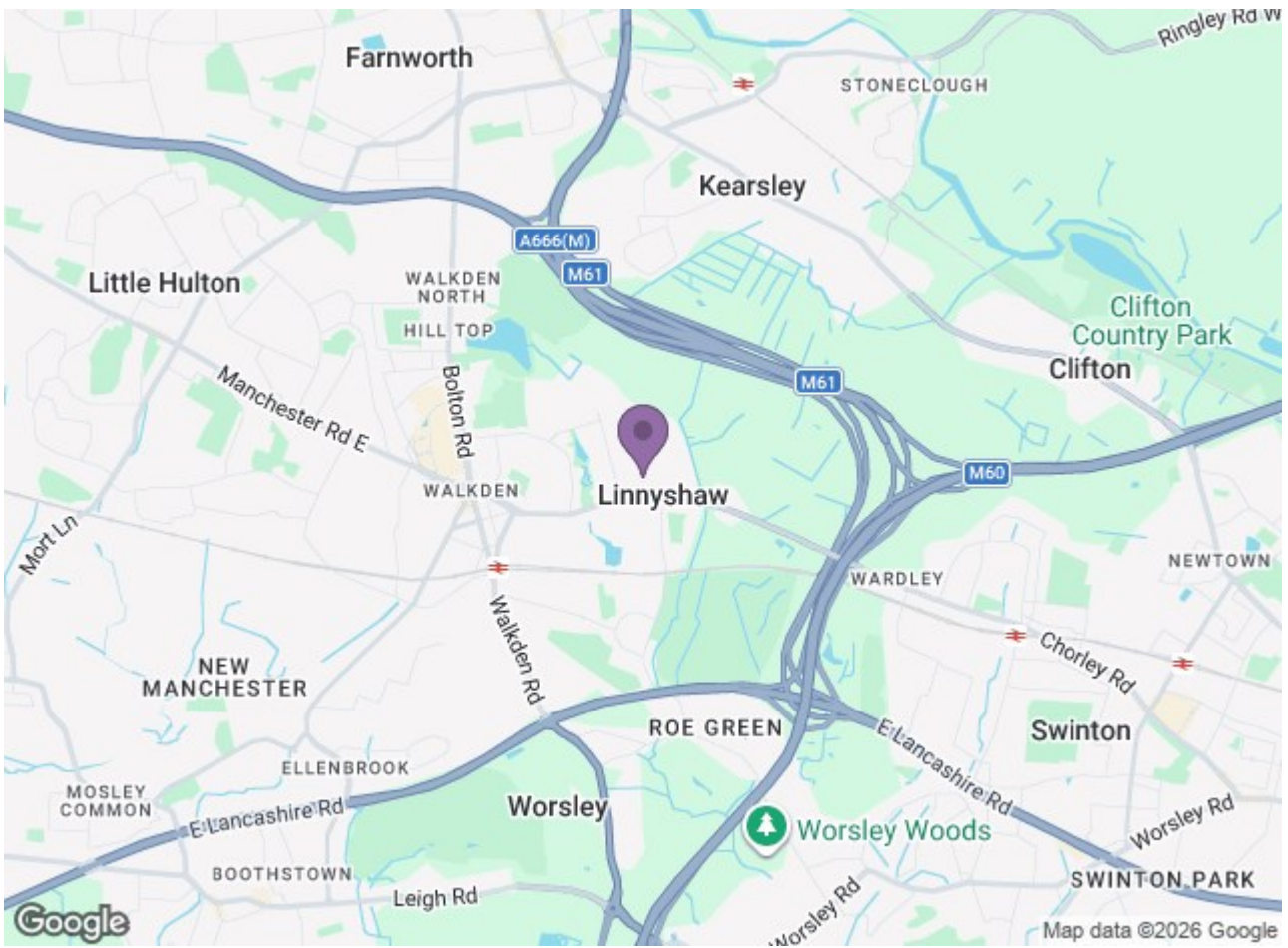
£1,350 Per Month

Welcome to Heyfields. Located in Walkden, Heyfields is an impressive new development of 66 family homes and 72 apartments, 7 miles from Manchester city centre. Set in a picturesque location and within easy reach of the city centre, this development is ideal for both growing families and young professional couples.

The beautifully designed Weaver makes a wonderful family home or a spacious haven for couples. The front door leads you straight into the hallway with a WC to one side. Further on is the contemporary open-plan kitchen and dining area. Beyond this is the comfortable living room with plenty of space and fabulous French windows that open out onto the garden. Great news if you enjoy al fresco dining and entertaining.

Upstairs you'll find a generously sized master bedroom, a double bedroom and a single bedroom. The family sized bathroom features a separate bath and shower. Modern and energy-efficient, the Weaver is built to high standards with beautiful flooring throughout, with fitted alarm systems for extra security and peace of mind.





Energy Efficiency Rating		Environmental Impact (CO ₂) Rating	
Current	Target	Current	Target
Energy A	Energy D	84	88
Energy B	Energy C	85	87
Energy C	Energy D	86	86
Energy D	Energy E	87	85
Energy E	Energy F	88	84
Energy F	Energy G	89	83
Energy G	Energy H	90	82
Energy H	Energy I	91	81
Energy I	Energy J	92	80

England & Wales

Ascend
Built on higher standards