

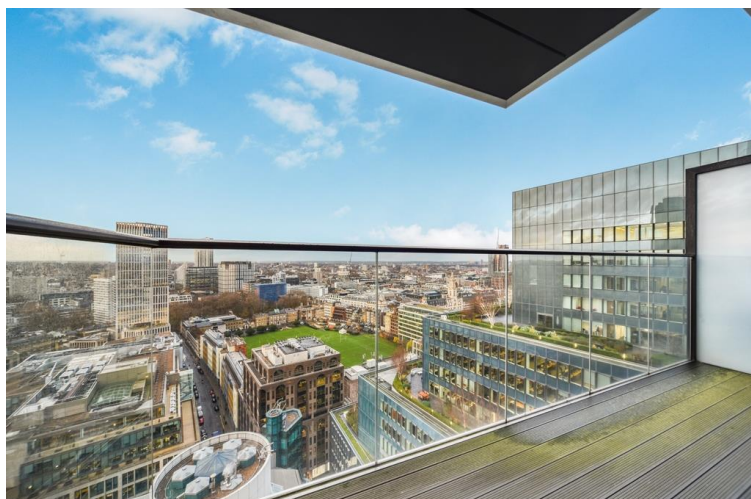


## Moor Lane, London EC2Y

Price £1,195 per week - Furnished







## Description

A furnished 2 bedroom apartment situated on the 26th floor of the sought after Heron development.

This stunning 2 bedroom apartment comprises 2 double bedrooms, 2 luxury bathrooms with marble finish, contemporary open plan kitchen with Miele appliances, Walnut flooring, spacious reception area with access to large balcony and floor to ceiling windows. Boasting an extremely high specification with comfort cooling and smart home technology complete with central control panel, iPod docking system and ceiling speakers.

The development is located in the heart of the City of London and is within easy reach of stations such as Bank (0.5 miles) and Moorgate (0.2 miles). The Heron benefits from an on-site gym, exclusive resident's club, 24 hour concierge.

We understand that cooling / heating is delivered via a communal system for which separate charges apply.

A stylish and bright studio apartment in this award winning development with 24 hour concierge, located at the newest Piazza of WC2, and ideally located for Covent Garden, Shaftesbury Avenue and Bloomsbury.

Council tax band: G. Rent is payable on a monthly basis and you may be required to pay more than a month's rent in advance, depending on your circumstances. You will be required to pay a 1 week holding deposit following a successful offer. Tenancies with annual rents up to £50,000 will require a 5 weeks' security deposit, while those exceeding this threshold will require a 6 weeks' deposit. Utility bills, council tax, telephone line and broadband are not included in the rent. As well as paying the rent, you may also be required to make some additional permitted payments. If your tenancy does not qualify as an AST, additional fees may apply. Please visit [jll.co.uk/fees](http://jll.co.uk/fees) for details of fees that may be payable when renting a property. To check broadband and mobile phone coverage please visit Ofcom here [ofcom.org.uk/phones-telecoms-and-internet/advice-for-consumers/advice/ofcom-checker](http://ofcom.org.uk/phones-telecoms-and-internet/advice-for-consumers/advice/ofcom-checker)

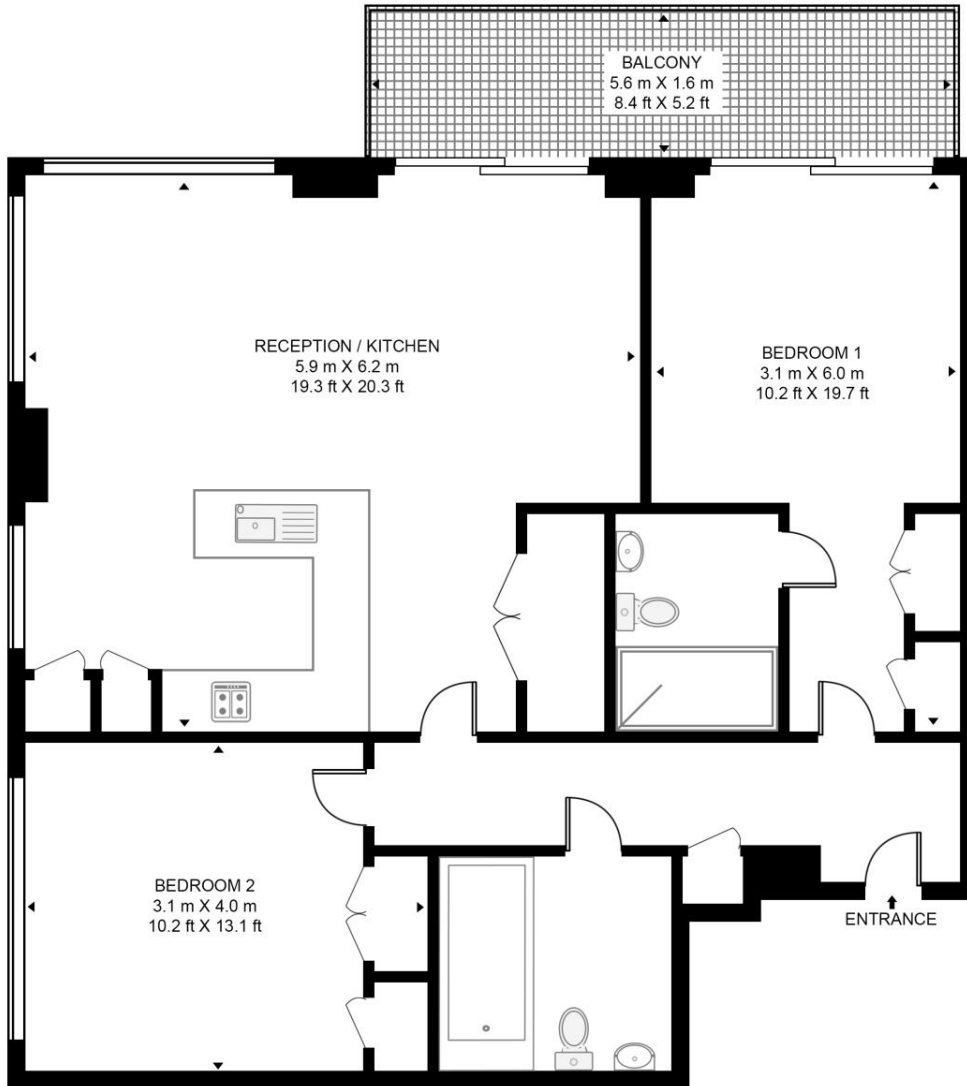
- 2 Bedrooms
- 2 Bathrooms
- 26th Floor
- Large balcony
- On site gym
- 24 hour concierge
- 0.2 miles from Moorgate Station
- Approx. 852 sq ft (79.2 sq m)
- Furnished
- EPC: C

# Floorplan

852 sq ft | 79 sq m

## THE HERON

APPROXIMATE GROSS INTERNAL FLOOR AREA 852 SQ.FT (79.2 SQ.M)



**HDVA**

This floor plan has been defined by the RICS Code of Measurement. This floor plan and all others are for approximate representative purposes only and upon usage is agreed to as such by the client.

WWW: [hdvirtualart.com](http://hdvirtualart.com) | TEL: 0203.974.1567 | EMAIL: [info@hdvirtualart.com](mailto:info@hdvirtualart.com)

City  
25 Walbrook The Walbrook  
Building,  
London EC4N 8AF  
+4420 7337 4000

*Urban living, your way.*

[jll.co.uk/residential](http://jll.co.uk/residential)

© 2019 Jones Lang LaSalle IP, Inc. All rights reserved. All information contained herein is from sources deemed reliable; however, no representation or warranty is made to the accuracy thereof.

