



## Brent Cross Gardens, NW4

£300 Per week

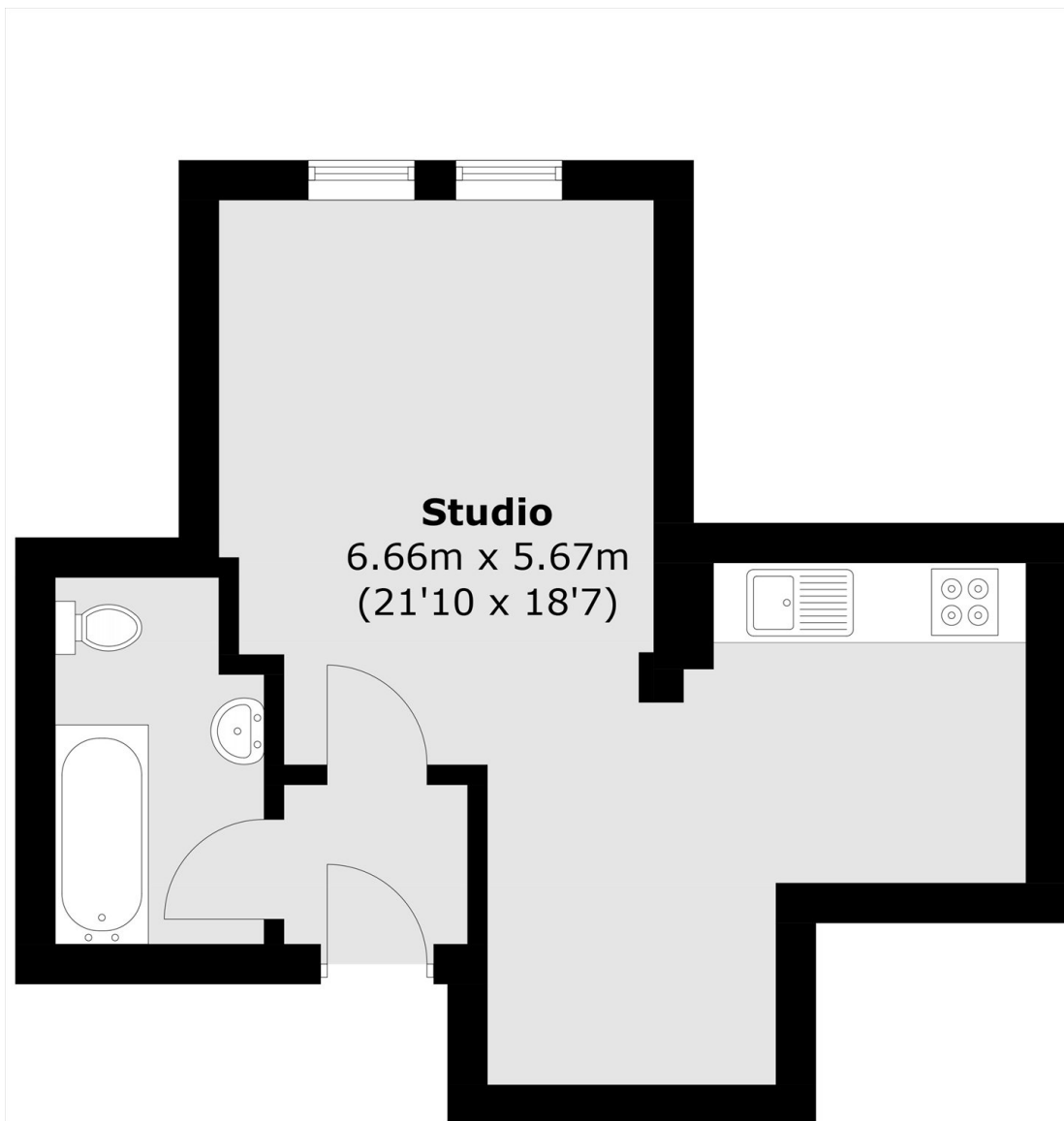
This well presented top floor studio flat has a spacious living area with an integrated kitchen, tiled bathroom, and wood flooring. The flat is ideally situated with Brent Cross and excellent transport links on the doorstep. The property is inclusive of gas, water, and electricity.

The development is well situated with Brent Cross moments away, excellent transport links with great access to the A406, A1, and the M1. Hendon Central and Brent Cross underground stations are also nearby for access into the city.

### Features

Studio  
Utilities Included  
Fitted Kitchen  
Tiled Shower Room  
Wood Flooring  
Ideally Situated

# Brent Cross Gardens, London, NW4



Total area (approx.): 31.3 sq. m (336.9 sq. ft)