



Moore House, Grosvenor Waterside, SW1W 8DU

£725 Per Week





£725 Per Week

Moore House

Grosvenor Waterside, SW1W 8DU

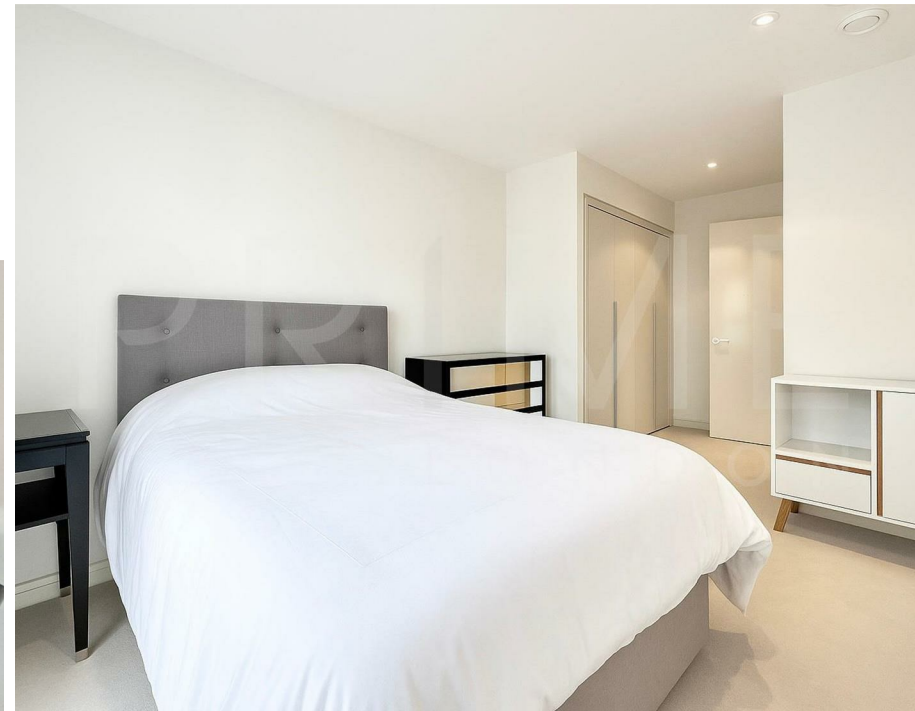
- One bedroom apartment
- Open-plan layout
- Walking distance to King's Road
- 587 sq ft (54.57 sqm)
- Residents' gym and spa
- 24 hour concierge

This one bedroom apartment, located in the sought after Grosvenor Waterside, is available for rent through Prime London.

Totalling 587 sq ft (54.57 sqm), the property comprises a large open plan kitchen, complete with an island. The apartment includes a generously sized bedroom, offering ample space, and a bathroom.

Other benefits include a residents' gym, spa, and 24 hour concierge. It is a perfect environment for modern living in one of London's most prestigious and dynamically changing areas.

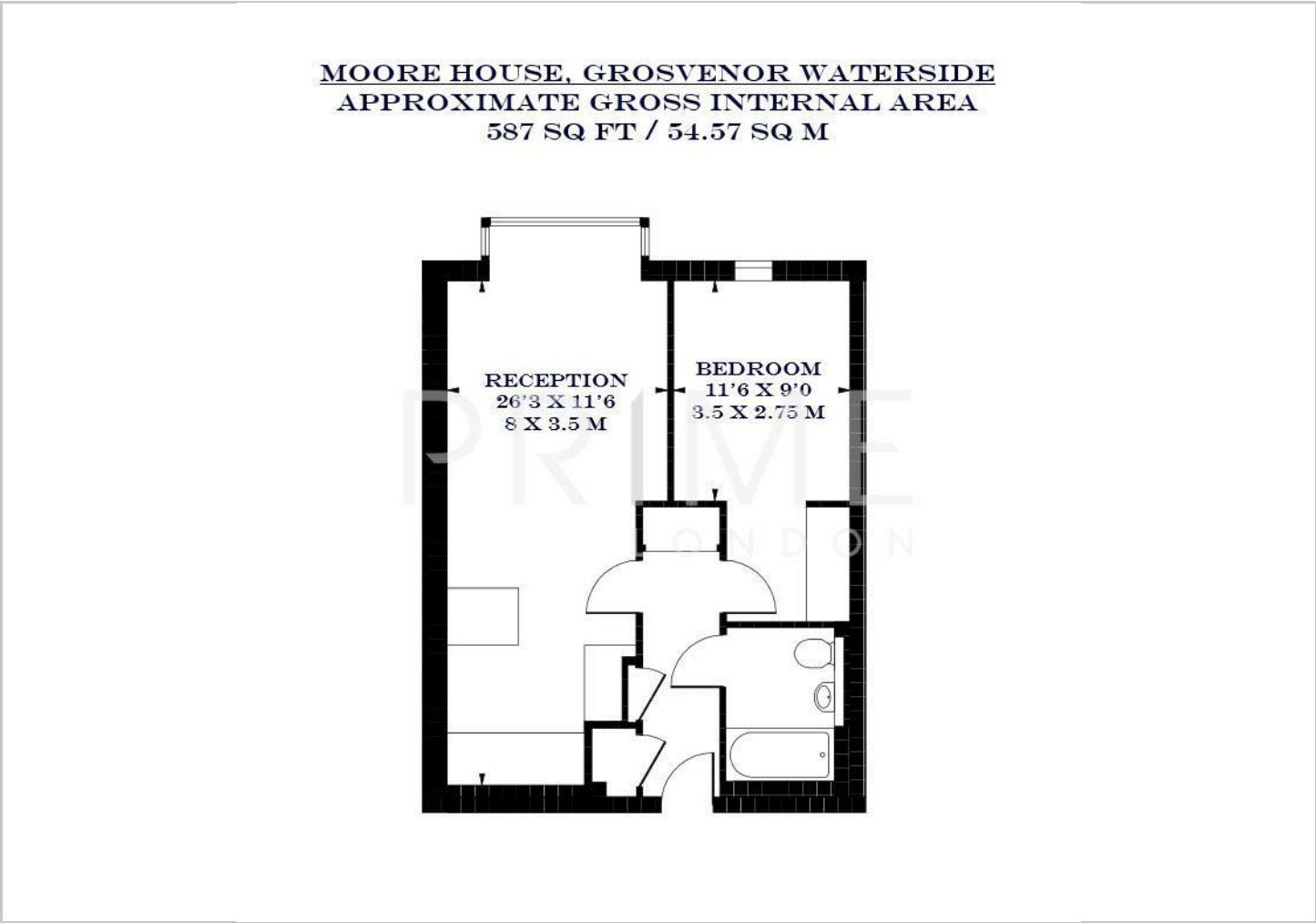
Situated on the north side of the river by Chelsea Bridge, the open spaces of Battersea Park are also close by. The Victoria mainline and underground station (Victoria, Circle and District lines, zone 1) is also within close proximity. Grosvenor Waterside is located just half a mile away from Sloane Square underground station and within easy walking distance of fashionable Kings Road.







Floor Plans

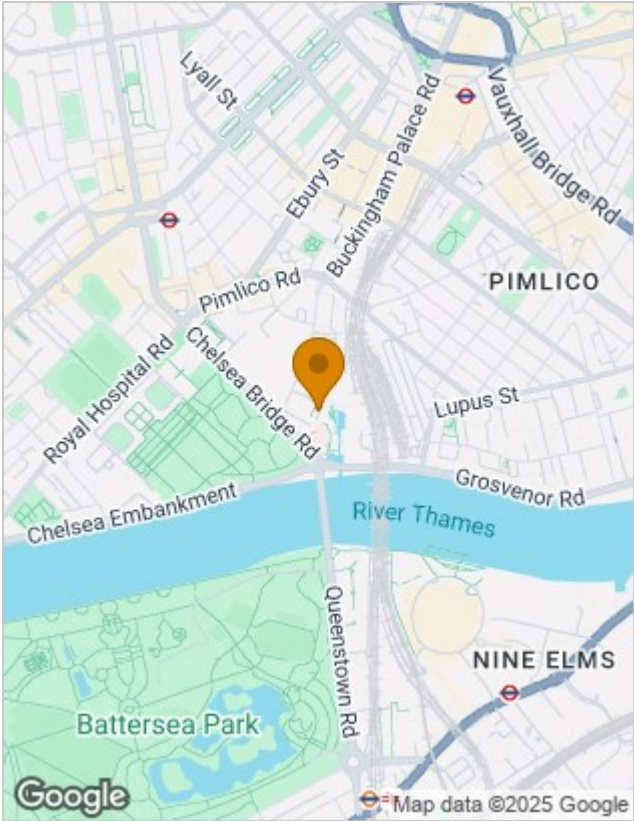


Viewing

By appointment. Contact us if you wish to arrange a viewing appointment for this property, or require further information.

The particulars are set out as a general outline only for the guidance of intended purchasers or lessees, and do not constitute, any part of a contract. Nothing in these particulars shall be deemed to be a statement that the property is in good structural condition or otherwise nor that any of the services, appliances, equipment or facilities are in good working order. Purchasers should satisfy themselves of this prior to purchasing.

Location Map



Energy Performance Graph

