



## Blackshaw Road, SW17

### £380,000

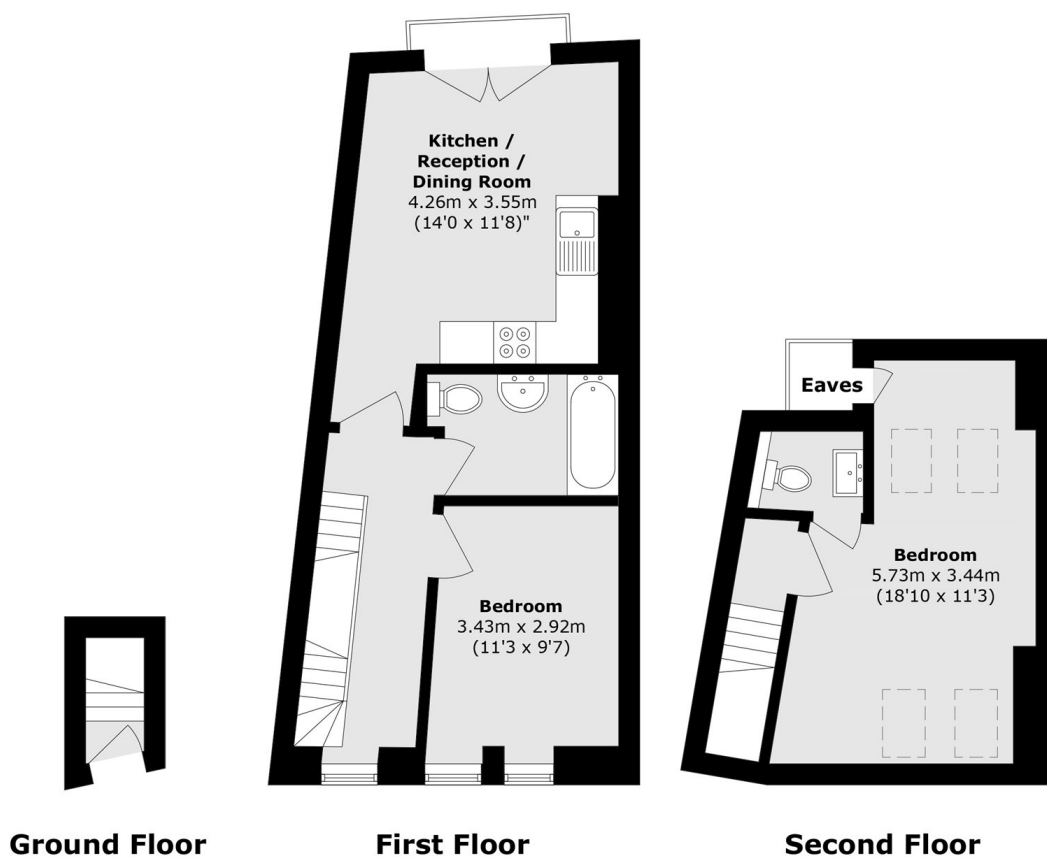
A larger than average and well presented two double bedroom split level apartment in the heart of Tooting with an open-plan kitchen/reception room, two double bedrooms, a family bathroom and an additional w/c. The property is sold chain free.

Blackshaw Road benefits from easy access to the many shops, independent bars and restaurants of Tooting High Street with easy access to the transport links of Tooting Broadway Underground station.

### Features

- Two Double Bedrooms
- Split Level
- Chain Free
- Open-Plan Kitchen/Reception Room
- Convenient Location
- New Lease

# Blackshaw Road, London, SW17



Total area (approx.): 63 sq. m (678.1 sq. ft)  
(Excluding Eaves)