



Connells

High Street
Greenfield Bedford

High Street Greenfield Bedford MK45 5DD

for sale
£475,000



Property Description

Nestled in the picturesque village of Greenfield, this delightful three bedroom detached home offers a perfect blend of comfort and convenience. Boasting spacious rooms throughout, this property is ideal for families looking for a peaceful retreat with easy access to local amenities. The principal bedroom features a luxurious en-suite bathroom, providing a private sanctuary for relaxation. With generously sized bedrooms, there's plenty of space for everyone to unwind. A standout feature is the double garage located to the rear of the property, offering secure parking and additional storage. Don't miss the opportunity to make this wonderful house your new home.

Kitchen/ Diner

17' 4" x 9' 9" (5.28m x 2.97m)

Double glazed windows, island unit, sink/ drainer, integrated oven with induction hob and extractor, integrated dishwasher, washing machine, fridge/ freezer, fitted all to base units, easy clean work surfaces. Storage cupboards.

Entrance/ Hallway

Door to front, double glazed window.

Cloakroom

Double glazed window, heated towel radiator, low level wc, hand wash basin.

Living Room

18' 1" x 9' 9" (5.51m x 2.97m)

Double glazed window, door to garden, radiator.



First Floor

Landing

Double glazed window, loft access, radiator.

Bedroom 1

14' x 9' 9" (4.27m x 2.97m)

Double glazed window, radiator.

En-Suite

Double glazed window, shower, low level wc, hand wash basin, heated towel rail.

Bedroom 2

9' 7" x 8' 11" (2.92m x 2.72m)

Double glazed window, radiator

Bedroom 3

9' 1" x 8' 11" (2.77m x 2.72m)

Double glazed window, radiator

Bathroom

Double glazed windows, low level wc, hand wash basin, heated towel rail, bath, shower, spotlights, storage cupboard.

Front Garden

Stepped pathway to front door.

Rear Garden

Laid to lawn, decking, mature shrub border.

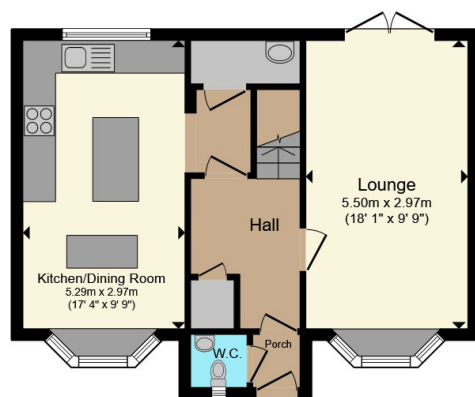
Garage

Double garage with electric doors.

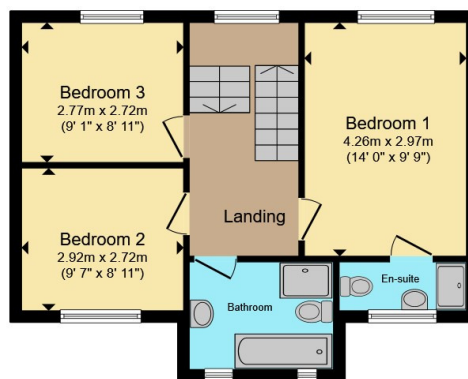




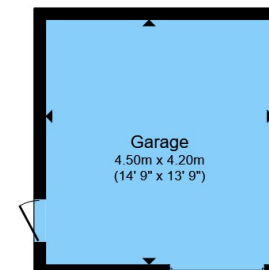




Ground Floor



First Floor



Garage

Total floor area 111.5 m² (1,200 sq.ft.) approx

This floor plan is for illustrative purposes only. It is not drawn to scale. Any measurements, floor areas (including any total floor area), openings and orientation are approximate. No details are guaranteed, they cannot be relied upon for any purpose and they do not form part of any agreement. No liability is taken for any error, omission or misstatement. A party must rely upon its own inspection(s). Powered by www.propertybox.io

Connells

To view this property please contact Connells on

T 01525 712 271
E flitwick@connells.co.uk

Unit 9 Russell Centre Coniston Road Flitwick
BEDFORD MK45 1QY

EPC Rating: C Council Tax
Band: E

Tenure: Freehold

view this property online connells.co.uk/Property/FLI305728



1. MONEY LAUNDERING REGULATIONS Intending purchasers will be asked to produce identification documentation at a later stage and we would ask for your co-operation in order that there will be no delay in agreeing the sale. 2. These particulars do not constitute part or all of an offer or contract. 3. The measurements indicated are supplied for guidance only and as such must be considered incorrect. Potential buyers are advised to recheck measurements before committing to any expense. 4. We have not tested any apparatus, equipment, fixtures, fittings or services and it is in the buyers interest to check the working condition of any appliances.

Connells Residential is registered in England and Wales under company number 1489613, Registered Office is Cumbria House, 16-20 Hockliffe Street, Leighton Buzzard, Bedfordshire, LU7 1GN. VAT Registration Number is 500 2481 05.

See all our properties at www.connells.co.uk | www.rightmove.co.uk | www.zoopla.co.uk

Property Ref: FLI305728 - 0004