



## SINCLAIR ROAD, W14

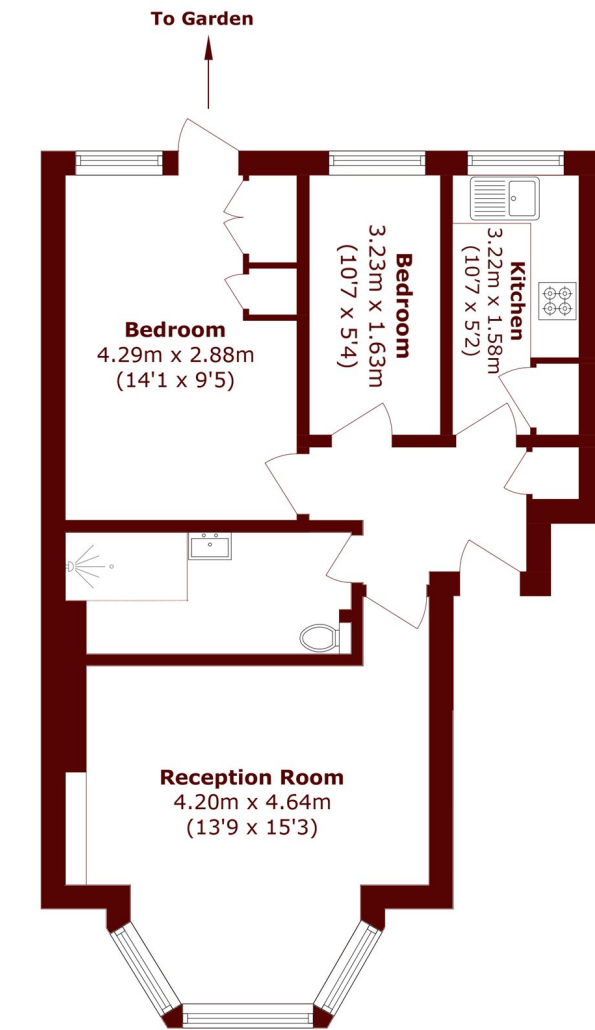
£450,000

A one and a half bedroom flat on the lower ground floor of this Victorian conversion with an incredible private garden. This flat has a separate kitchen, high ceilings and the opportunity to make it your own.

Lower Ground Floor  
Private Garden  
Potential To Modernise

Separate Kitchen  
No Onwards Chain  
Kensington Olympia

# STEP INSIDE SINCLAIR ROAD



Total area (approx.): 52.0 sq. m (559.7 sq. ft)

**Brook Green**  
020 7605 7765

Energy Rating: We aim to make our particulars both accurate and reliable. However, they are not guaranteed; nor do they form part of an offer or contract. If you require clarification on any points then please contact us, especially if you're traveling some distance to view. Please note that appliances and heating systems have not been tested and therefore no warranties can be given as to their good working order

**MARSH &  
PARSONS**