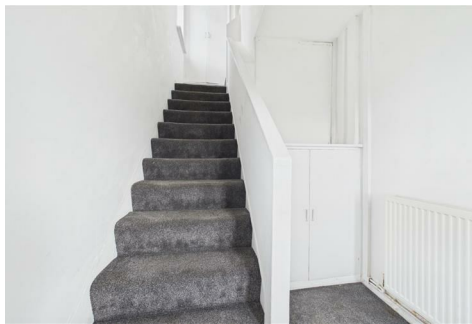




RE/MAX
Prime Estates



2 Wavell Road, Brierley Hill, DY5 2EX
£675 Per month

A spacious and well-presented one-bedroom top-floor flat, forming part of a maisonette and benefiting from its own private entrance.

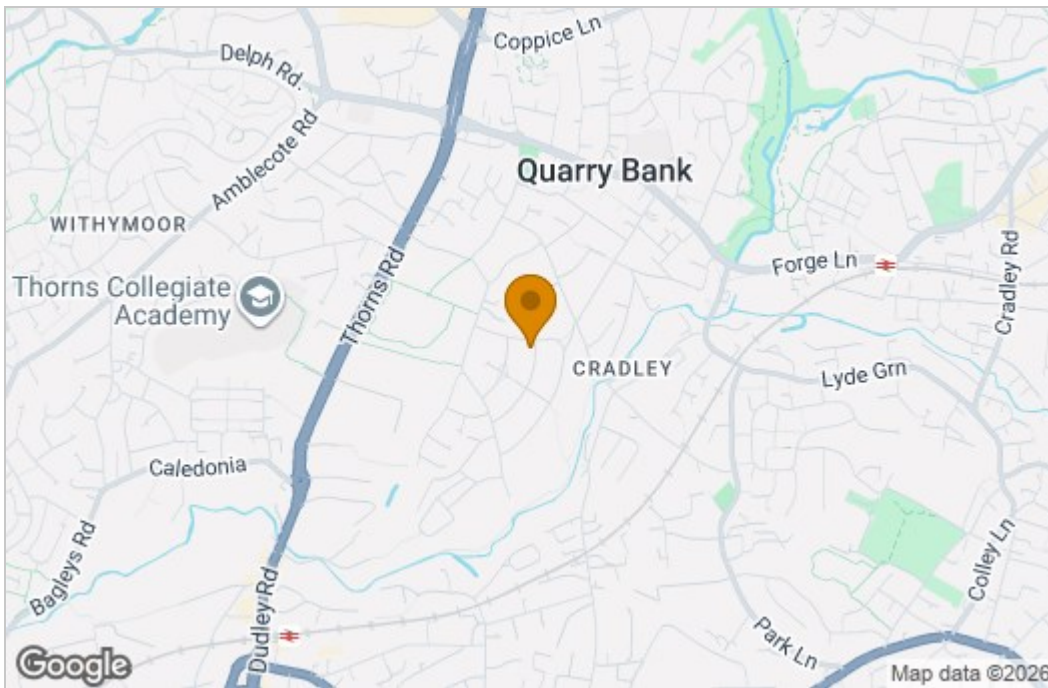
The accommodation comprises an entrance hallway with useful storage space, a generous lounge offering ample room for both living and entertaining, a single or small double sized bedroom with an integrated wardrobe, a bathroom fitted with a white suite and shower over the bath, and a particularly spacious kitchen featuring modern grey units and sufficient space for a dining table.

The bedroom comfortably accommodates a small double bed, while the kitchen provides an excellent area for cooking and dining. The property offers bright and practical living accommodation throughout and would be ideal for a single professional or couple.

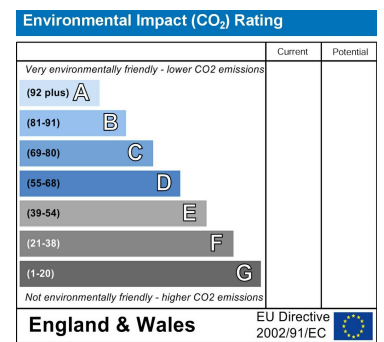
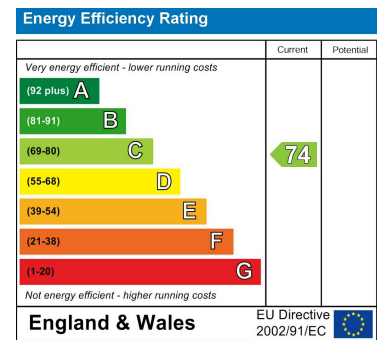
Early viewing is recommended.

Floor Plan

Area Map



Energy Efficiency Graph



These particulars, whilst believed to be accurate are set out as a general outline only for guidance and do not constitute any part of an offer or contract. Intending purchasers should not rely on them as statements of representation of fact, but must satisfy themselves by inspection or otherwise as to their accuracy. No person in this firm's employment has the authority to make or give any representation or warranty in respect of the property.

Stourbridge, West Midlands, DY8 1DX

Tel: +44 (0) 1384 438457 Email: prime.estates@remax.uk <https://remax.uk/locations/RE-MAX-Prime-Estates>