



Edgel Street, SW18

£3,500 Per calendar month

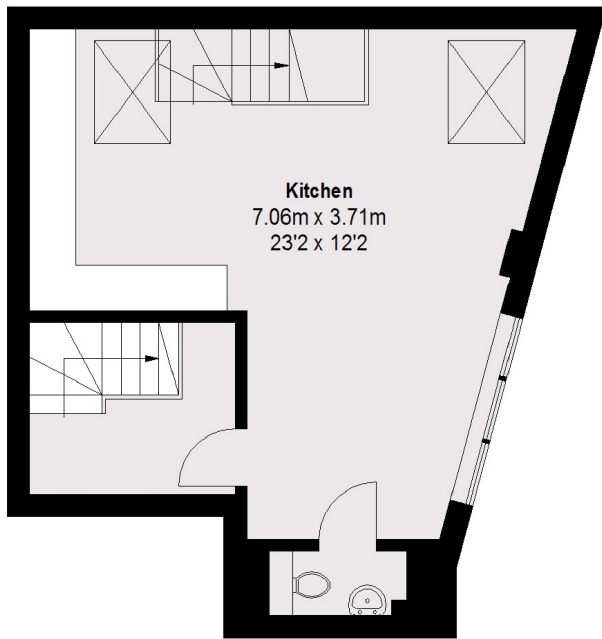
A unique one / two bedroom property set over three floors, includes a private west facing terrace, separate study, large bedroom with en suite bathroom and an open plan kitchen/reception room.

Edgel Street is moments from riverside walks along the Thames and the green spaces of Wandsworth Park. Close by are a wealth of cafes, bars, shops and restaurants and Wandsworth Town Station.

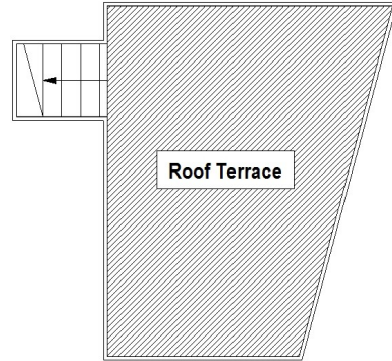
Features

- One Bedroom
- Parquet Flooring
- Large Study / Spare Room
- Private Roof Terrace
- Split-Level Flat
- Basement

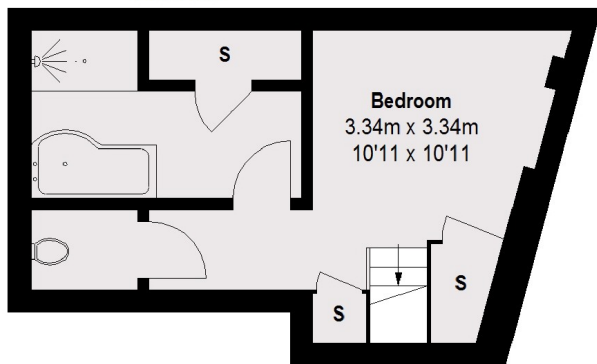
Edgel Street, London, SW18



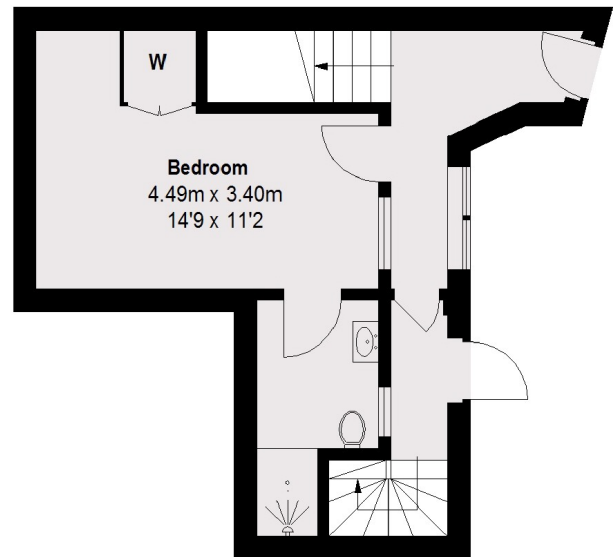
First Floor



Roof Terrace



Basement



Ground Floor

Total area (approx.): 95.42 sq. m (1027 sq. ft)
Roof Terrace: 14.39 sq. m (155 sq. ft)