



Connells

Crocker Way
Wincanton



Property Description

Boasting a large, private, southerly facing garden, this well positioned house also offers many luxury features. These include a stylish ensuite and bathroom, an impressive 25' kitchen/dining room with feature brick wall, built in appliances, solid oak flooring and downlighters. There is also a separate study.

Entrance Hall

Solid oak flooring, doors to cloakroom, lounge and kitchen/dining room, built in cupboard, stairs to first floor.

Utility Cloakroom

Comprising a hanging wash hand basin with WC with concealed cistern, fitted storage cupboards with built in and concealed washing machine, oak flooring.

Lounge

Double aspect with large square bay window to front and with further window to side.

Study

Front aspect.

Kitchen/ Dining Room

Comprising a single drainer double bowl sink unit, range of gloss wall and base units, built

in double oven, inset five ring gas hob unit with steel hood over with integrated downlighters, built in and concealed dishwasher, built in and concealed fridge and freezer, under lighting, solid oak flooring, downlighter spots, rear aspect.

Dining Area

French doors to garden, solid oak flooring, feature brick wall .

Landing

Built in airing cupboard.

Master Suite

Master Bedroom

Built in double wardrobe, large square bay window to front.

Ensuite

Comprising a double shower cubicle with built in shower, hanging wash hand basin, hanging WC with concealed cistern, tiled floor. vanity shelf, heated chrome towel rail.

Bedroom Two

Built in double wardrobe, rear aspect with extensive views..

Bedroom Three

Wardrobe recess, Front aspect.

Bedroom Four

Rear aspect with extensive views.

Bathroom

Comprising a panel enclosed bath with built in shower and glass screen, hanging wash hand basin, hanging WC with concealed cistern, tiled floor, vanity shelf, heated chrome towel rail.

Outside

Rear Garden

This wide and southerly facing garden is a real sun trap and features a good size patio ideal for entertaining and alfresco dining. The garden is mainly lawned and there is a useful area of shingle to the side. The garden offers excellent privacy and an open outlook and further features twin coach lights, an external water supply, external power supply, personal door to the garage and gated side access.

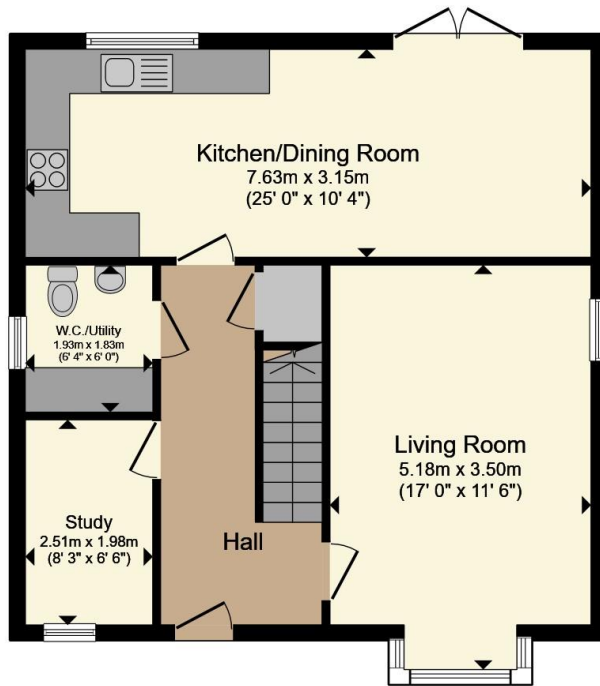
Garage

With up and over door, eaves storage space, power and light and personal door to the garden.

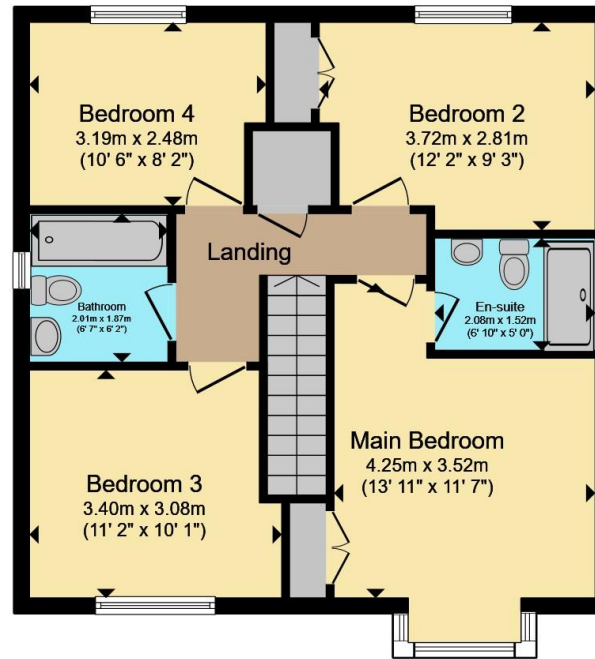








Ground Floor



First Floor

Total floor area 120.2 m² (1,294 sq.ft.) approx

This floor plan is for illustrative purposes only. It is not drawn to scale. Any measurements, floor areas (including any total floor area), openings and orientation are approximate. No details are guaranteed, they cannot be relied upon for any purpose and they do not form part of any agreement. No liability is taken for any error, omission or misstatement. A party must rely upon its own inspection(s). Powered by www.propertybox.io



To view this property please contact Connells on

T 01980 622 662
E amesbury@connells.co.uk

Unit 3 23 Salisbury Street AMESBURY
SALISBURY SP4 7AW

view this property online connells.co.uk/Property/ABY308678

Under the terms of the Estate Agency Act 1979 (Section 21), please note that the vendor is an Employee of the Connells Group of companies.

EPC Rating: C Council Tax Band: E

Tenure: Freehold



1. MONEY LAUNDERING REGULATIONS Intending purchasers will be asked to produce identification documentation at a later stage and we would ask for your co-operation in order that there will be no delay in agreeing the sale. 2. These particulars do not constitute part or all of an offer or contract. 3. The measurements indicated are supplied for guidance only and as such must be considered incorrect. Potential buyers are advised to recheck measurements before committing to any expense. 4. We have not tested any apparatus, equipment, fixtures, fittings or services and it is in the buyers interest to check the working condition of any appliances.

Connells Residential is registered in England and Wales under company number 1489613, Registered Office is Cumbria House, 16-20 Hockliffe Street, Leighton Buzzard, Bedfordshire, LU7 1GN. VAT Registration Number is 500 2481 05.

See all our properties at www.connells.co.uk | www.rightmove.co.uk | www.zoopla.co.uk

Property Ref: ABY308678 - 0009