



Le Rondin

La Route De La Trinite



Le Rondin, La Route De La Trinite, Trinity, JE3 5JP

Tucked away at the end of a private drive, this idyllic and spacious country property features stunning gardens, open meadows, and two additional accommodation units—a rare blend of charm, space, and total seclusion.

The main residence is a beautifully presented four bedroom, four bathroom home, thoughtfully laid out for both family living and entertaining.

At the heart of the home is a spacious, well-appointed kitchen that flows seamlessly into a light filled sun room with views over the gardens — the perfect setting for relaxed, everyday living. A separate formal dining room and a large drawing room/lounge provide generous spaces for entertaining and hosting guests in style.

Beyond the main house, the property features two additional annexes. One with a fitted kitchen, separate lounge, bedroom and bathroom, ideal for guests or extended family. A second fully self-contained two story unit, containing a fully fitted kitchen with a lounge/bedroom and bathroom, perfect for staff accommodation, a home office, or rental income potential.

Additional amenities include extensive garaging, a dedicated wine store, and ample parking for around 10 cars. The house is set within picturesque meadowland and grounds, offering a peaceful, rural lifestyle with plenty of space to enjoy the outdoors.

This is a rare opportunity to acquire a substantial and flexible country estate in a private and idyllic setting.



6



5



5

Parish: Trinity

Qualification: Qualified

Tenure: Freehold

Price £3,300,000



- Country home in rural location
- Spacious main house
- Two separate annexes
- Parking for 10 cars
- Mature gardens, meadowland and field
- Well maintained throughout







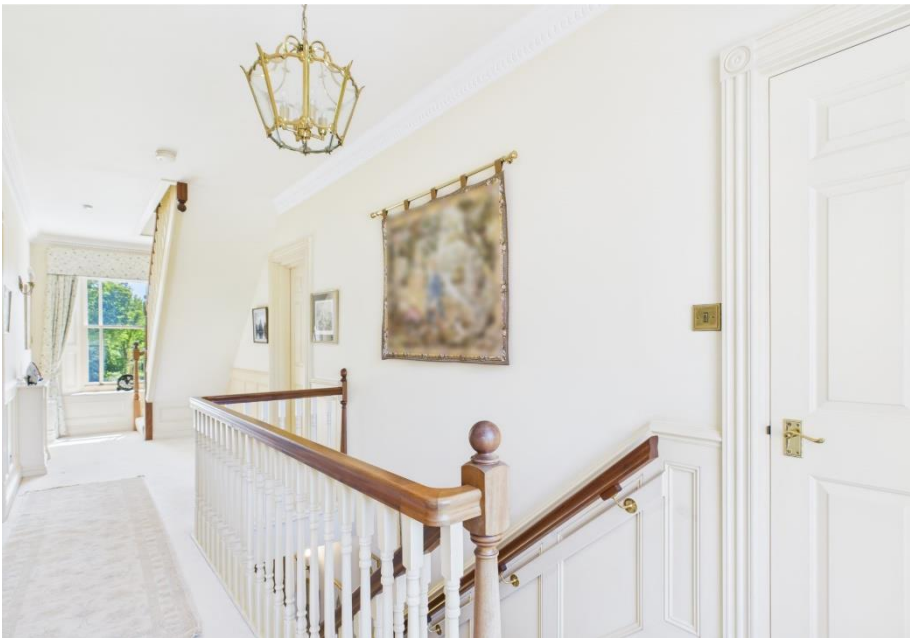












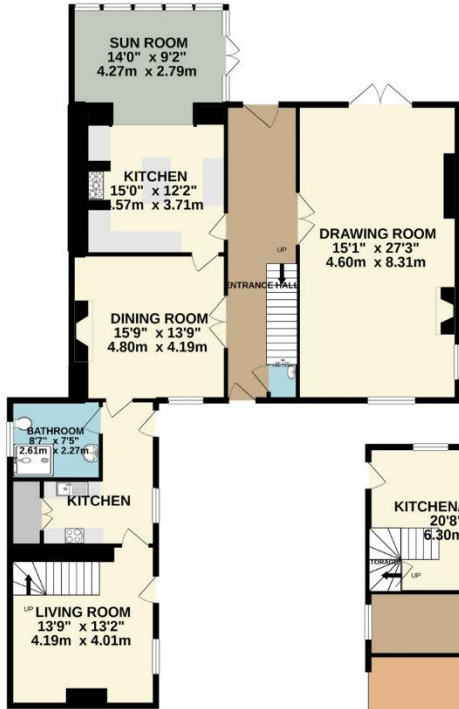








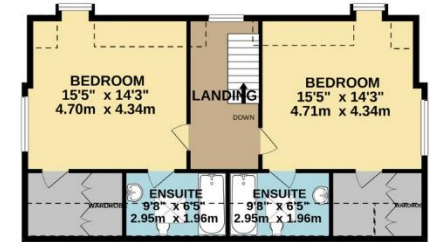
GROUND FLOOR
2316 sq.ft. (215.2 sq.m.) approx.



1ST FLOOR
1952 sq.ft. (181.3 sq.m.) approx.



2ND FLOOR
782 sq.ft. (72.7 sq.m.) approx.



WILSON'S

Light Frank

TOTAL FLOOR AREA : 5050 sq.ft. (469.1 sq.m.) approx.

Whilst every attempt has been made to ensure the accuracy of the floorplan contained here, measurements of doors, windows, rooms and any other items are approximate and no responsibility is taken for any error, omission or mis-statement. This plan is for illustrative purposes only and should be used as such by any prospective purchaser. The services, systems and appliances shown have not been tested and no guarantee as to their operability or efficiency can be given.
Made with Metropix ©2020

Approximate Gross Internal Area = 5050 sq. ft

This plan is for layout guidance only. Not drawn to scale unless stated. Windows and door openings are approximate. Whilst every care is taken in the preparation of this plan, please check all dimensions, shapes and compass bearings before making any decisions reliant upon them.

Services

Mains drains

Mains water

Oil fired heating

+441534 877977

Knight Frank Jersey

37-39 Halkett Place, St. Helier, Jersey JE2 4WG

knightfrank.je

Your partners in property

1. Particulars: These particulars are not an offer or contract, nor part of one. You should not rely on statements given by Knight Frank Jersey in the particulars, by word of mouth or in writing (“information”) as being factually accurate about the property, its condition or its value. Neither Knight Frank Jersey nor any joint agent has any authority to make any representations about the property, and accordingly any information given is entirely without responsibility on the part of Knight Frank Jersey. 2. Material Information: Please note that the material information is provided to Knight Frank Jersey by third parties and is provided here as a guide only. While Knight Frank Jersey has taken steps to verify this information, we advise you to confirm the details of any such material information prior to any offer being submitted. If we are informed of changes to this information by the seller or another third party, we will use reasonable endeavours to update this as soon as practical. 3. Photos, Videos etc: The photographs, property videos and virtual viewings etc. show only certain parts of the property as they appeared at the time they were taken. Areas, measurements and distances given are approximate only. 4. Regulations etc: Any reference to alterations to, or use of, any part of the property does not mean that any necessary planning, building regulations or other consent has been obtained. A buyer must find out by inspection or in other ways that these matters have been properly dealt with and that all information is correct. 5. Fixtures and fittings: A list of the fitted carpets, curtains, light fittings and other items fixed to the property which are included in the sale (or may be available by separate negotiation) will be provided by the Seller’s Lawyer. Particulars dated 03/09/2025. All information is correct at the time of going to print.

