

Colin Dean Residential

in partnership with Dexters



Shaftesbury Avenue, HA2

£1,800 pcm

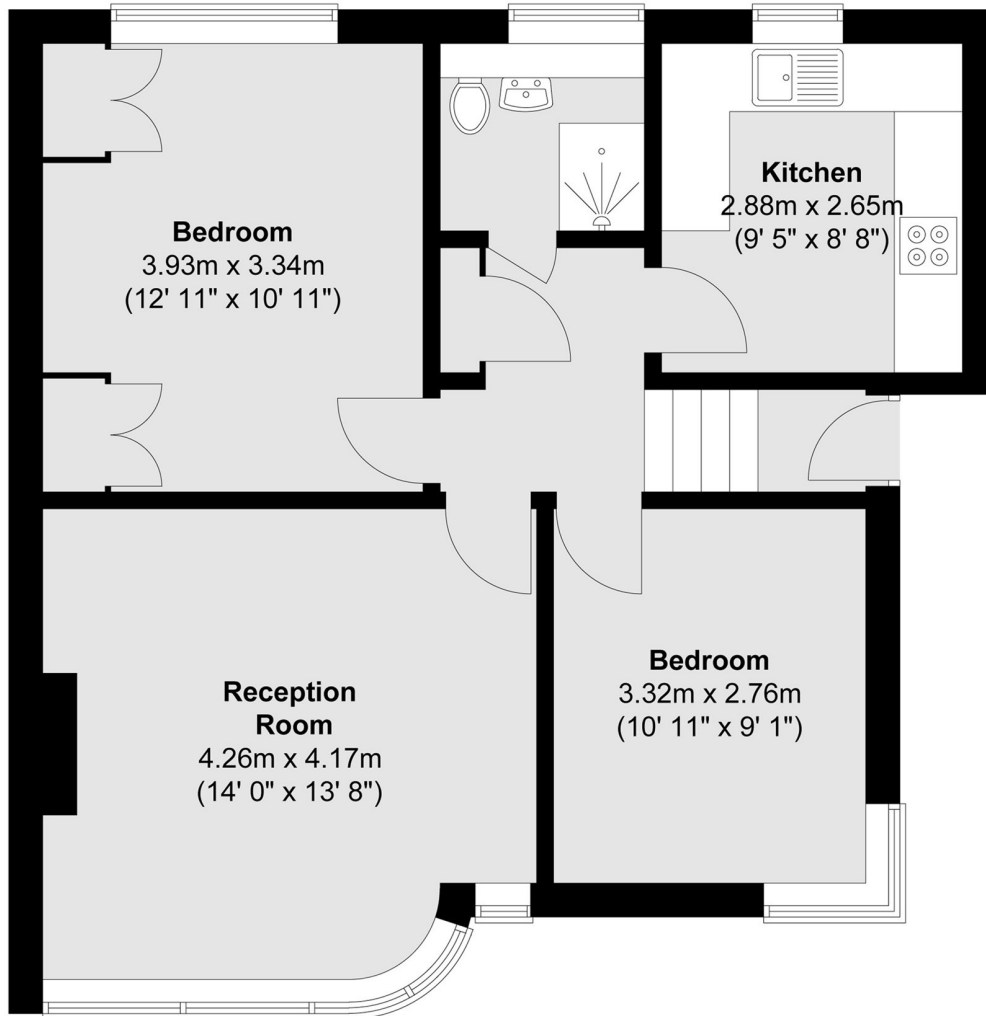
This beautifully renovated two-bedroom first-floor maisonette is set in a highly sought-after location and offers stylish, spacious living throughout. The property boasts two generously sized double bedrooms, a bright and airy reception room, and a separate modern kitchen fitted with brand new appliances. Perfect for a professional couple or small family, this charming home combines comfort, space, and contemporary living. Energy Rating: D.

The property is conveniently located within close proximity to local shops, bus routes, and highly regarded schools. West Harrow Station (Metropolitan Line) is approximately 0.6 miles away, while Rayners Lane Station (Metropolitan and Piccadilly Lines) is approximately 0.8 miles from the property, offering excellent transport links into Central London.

- Newly Refurbished Throughout • First Floor Maisonette • Two Double Bedrooms •
- Large Living Room • Separate Kitchen • Unfurnished •

Colin Dean Residential

in partnership with Dexters



Total area (approx.) : 59.1 sq. m (636 sq. ft)

Colin Dean Residential
350 Pinner Road,
Harrow, HA1 4LB
020 8515 7929
daniel.murray@colindean.com

Energy Rating: D We aim to make our particulars both accurate and reliable. However they are not guaranteed; nor do they form part of an offer or contract. If you require clarification on any points then please contact us, especially if you're travelling some distance to view. Please note that appliances and heating systems have not been tested and therefore no warranties can be given as to their good working order.