

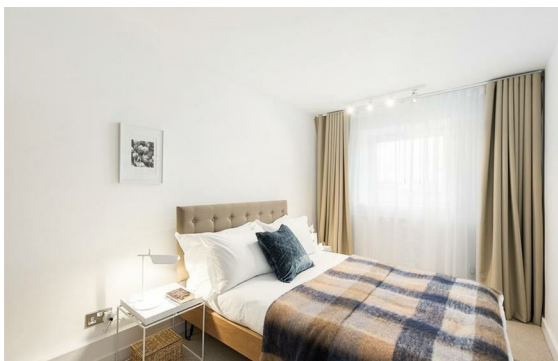
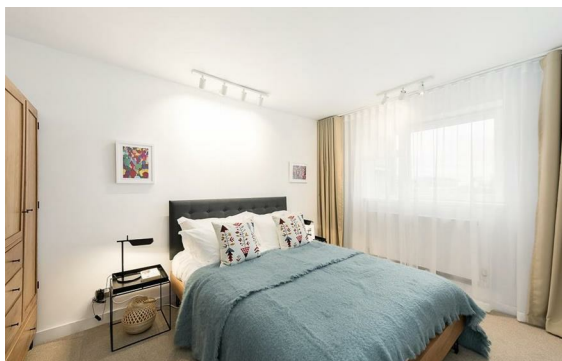


Hallam Street, Fitzrovia, London, W1W

Rent £1,150 PCM

2 Bed | 1 Bath | 1 Reception

Please call us on 020 7724 2233 or email us info@newingtonstates.com to book a viewing.



A beautifully presented two-bedroom apartment offering stylish interiors and modern living space in a sought-after central London location. The property features a bright reception room, a fully fitted contemporary kitchen, and two well-proportioned bedrooms. A modern bathroom and separate guest WC provide added convenience, while a private balcony extends the living space. The apartment is tastefully furnished to a high standard throughout.

Ideally located close to Baker Street Station, Marylebone High Street, and Regent's Park, with excellent transport links and a wide selection of cafés, restaurants, and boutique shops nearby.

EPC Rating: C

Energy Efficiency Rating: C

Agents Note: Whilst every care has been taken to prepare these particulars, they are for guidance purposes only. All measurements are approximate and are for general guidance purposes only and whilst every care has been taken to ensure their accuracy, they should not be relied upon and potential buyers/tenants are advised to recheck the measurements.

NEWINGTON
— ESTATES —

60 Upper Montagu Street

London

W1H 1SN

020 7724 2233

info@newingtonstates.com

<http://www.newingtonstates.com>