

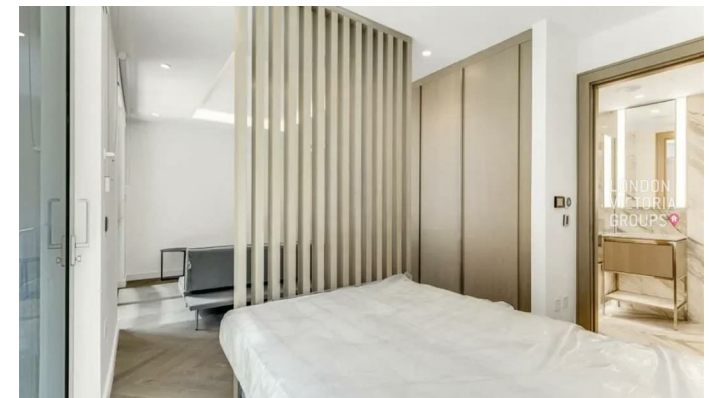
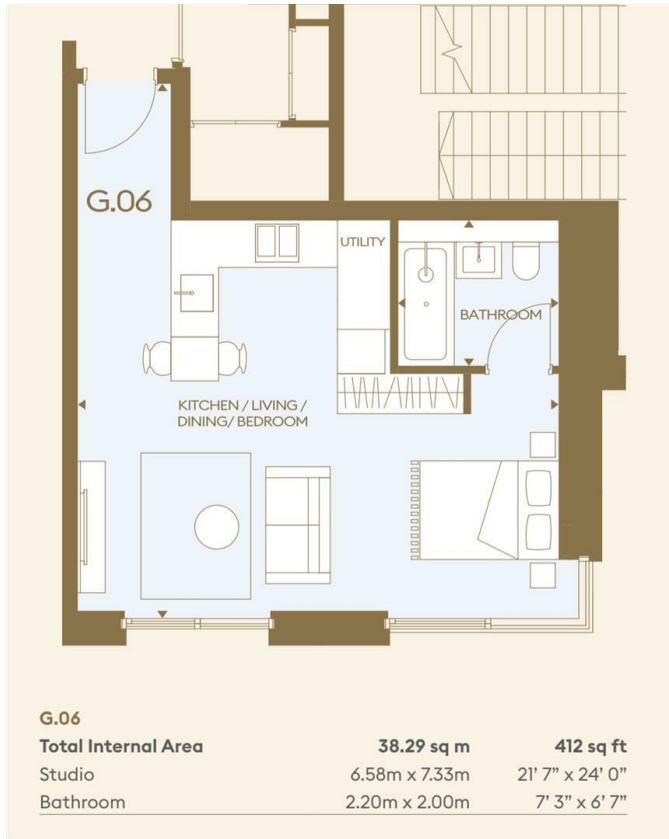


16 Minories , London EC3N 1BL

- Studio apartment
- Fully fitted contemporary kitchen with integrated appliances
 - 24-hour concierge and residents' services
- Prime City location, minutes from Aldgate, Tower Hill, and Liverpool Street stations
 - CTB-E
- Open-plan living and sleeping area with floor-to-ceiling windows
- Engineered flooring, comfort cooling
- Gym, spa, yoga studio, cinema
- EPC-B

£2,740 Per Month

Local Authority **City Of London**
Council Tax Band **E**
EPC Rating **B**



London Office Office
Spaces Victoria, 25 Wilton Road, Pimlico,
London, SW1V 1LW

Contact
020 3084 3094
XL@londonvictoriagroups.co.uk
www.londonvictoriagroups.co.uk

Agents Note: Whilst every care has been taken to prepare these particulars, they are for guidance purposes only. All measurements are approximate and for general guidance purposes only and whilst every care has been taken to ensure accuracy, they should not be relied upon and potential buyers/tenants are advised to recheck the measurements.