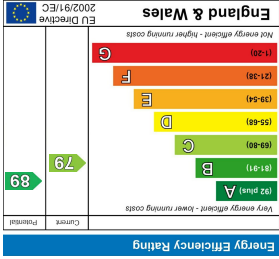
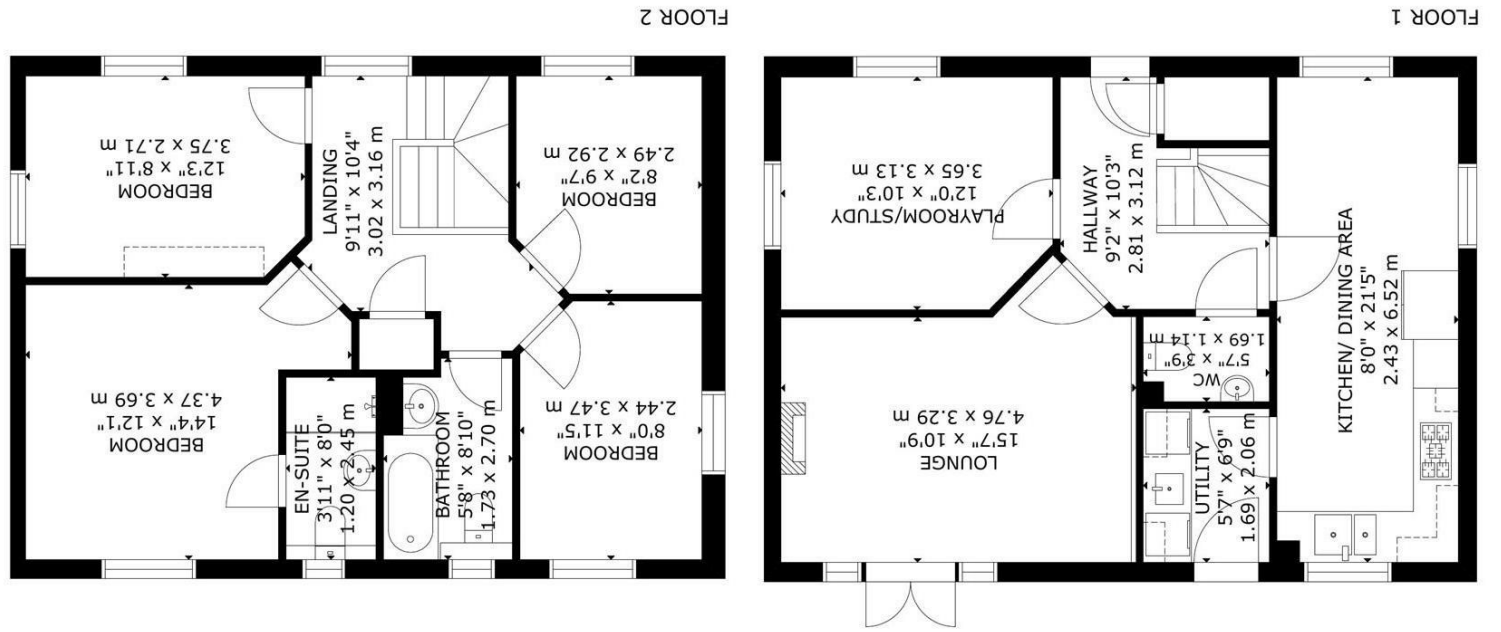
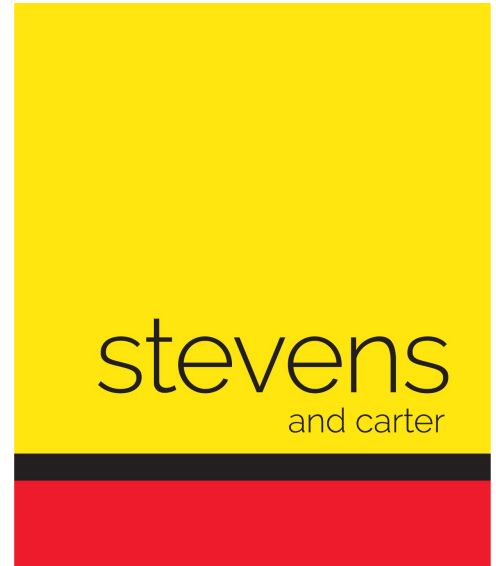


GROSS INTERNAL AREA
TOTAL: 118 m²/1271 sq ft
FLOOR 1: 59 m²/637 sq ft, FLOOR 2: 59 m²/634 sq ft
SIZE AND DIMENSIONS ARE APPROXIMATE, ACTUAL MAY VARY



54 Houghton - SC

Houghton Way, Hailsham



- 3D Virtual Tour
- Opposite Greenspace
- Edge of Development
- Tastefully Decorated
- Professionally Sprayed Kitchen
- Additional Driveway Parking
- Energy Efficient
- Utility Room
- Bus Route Closeby
- Walkable To Hellingly Schools

Freehold

£424,950

4 BEDROOM 2 RECEPTION 2 BATHROOM 1 GARAGE

Houghton Way, Hailsham

Houghton Way, Hailsham

DESCRIPTION

3D Virtual Tour | Prestigious Roebuck Park | Opposite Open Green Space | Very Well Presented | Additional Off Road Parking | Garage | Utility Room | Bus Route Nearby | Walkable To Local Schools |

A beautifully presented four bedroom detached family home, situated within the highly regarded Roebuck Park development in Hellingly and enjoying an attractive position opposite open green space.

The property offers spacious and well arranged accommodation throughout, ideal for modern family living. The ground floor comprises an entrance hallway, generous lounge with double doors opening onto the rear garden, a versatile playroom/study, and a spacious kitchen/dining room fitted with a range of units that have recently been professionally sprayed and finished in 'lick purple' with new copper handles. Further benefits include a useful utility room and ground floor cloakroom.

To the first floor are four bedrooms, including a main bedroom with en-suite shower room, alongside a modern family bathroom.

Externally, the property enjoys a pleasant rear garden, garage, and additional off road parking. The location is particularly convenient for families, being within walking distance of local schools, nearby bus routes, and surrounding green spaces, whilst also offering easy access towards Hailsham town centre and surrounding road links.

Additional benefits include gas central heating and double glazing throughout.



Houghton Way, Hailsham

