



# Kings Gardens, Hove, East Sussex, BN3

£875,000

Fabulous mansion apartment, detached Grade II listed building, overlooking Hove lawns, occupying whole of second floor, 2 receptions, 3 bedrooms, 3 bathrooms, recently updated, garage and parking.



## Description

This wonderful apartment sits opposite Hove lawns and promenade offering wonderful views of the sea and along the easterly coastline. Situated on the second floor of the detached Victorian building the property offers almost 2000sq ft of accommodation, reached via an extremely impressive communal hallway and staircase or via the lift. The main reception includes a feature fireplace and a wonderful south facing bay window offering the wonderful views. Adjacent to this is the formal dining room and this leads on to the spacious kitchen and breakfast room. This pleasant room offers wall and base units with integrated appliances and 2 large windows offering more views. To the front of the apartment is the master bedroom with fitted wardrobes and a bright and airy en suite shower room. There are two further double rooms, with one of these incorporating an en suite shower room and the second having a full en suite bathroom. Within the hall is a cloakroom with w/c and a large utility room with added storage.

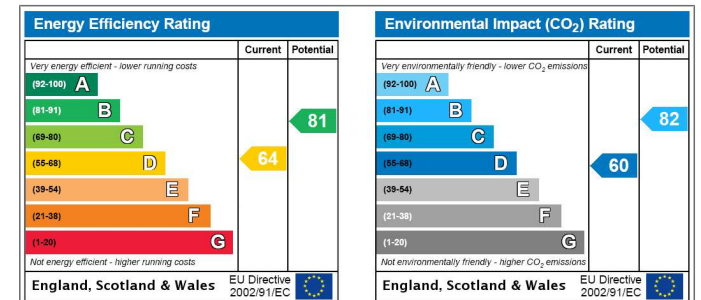
## Outside

To the side of this impressive house is an attractive communal garden. The property also benefits from a private detached garage and 2 further parking

spaces.

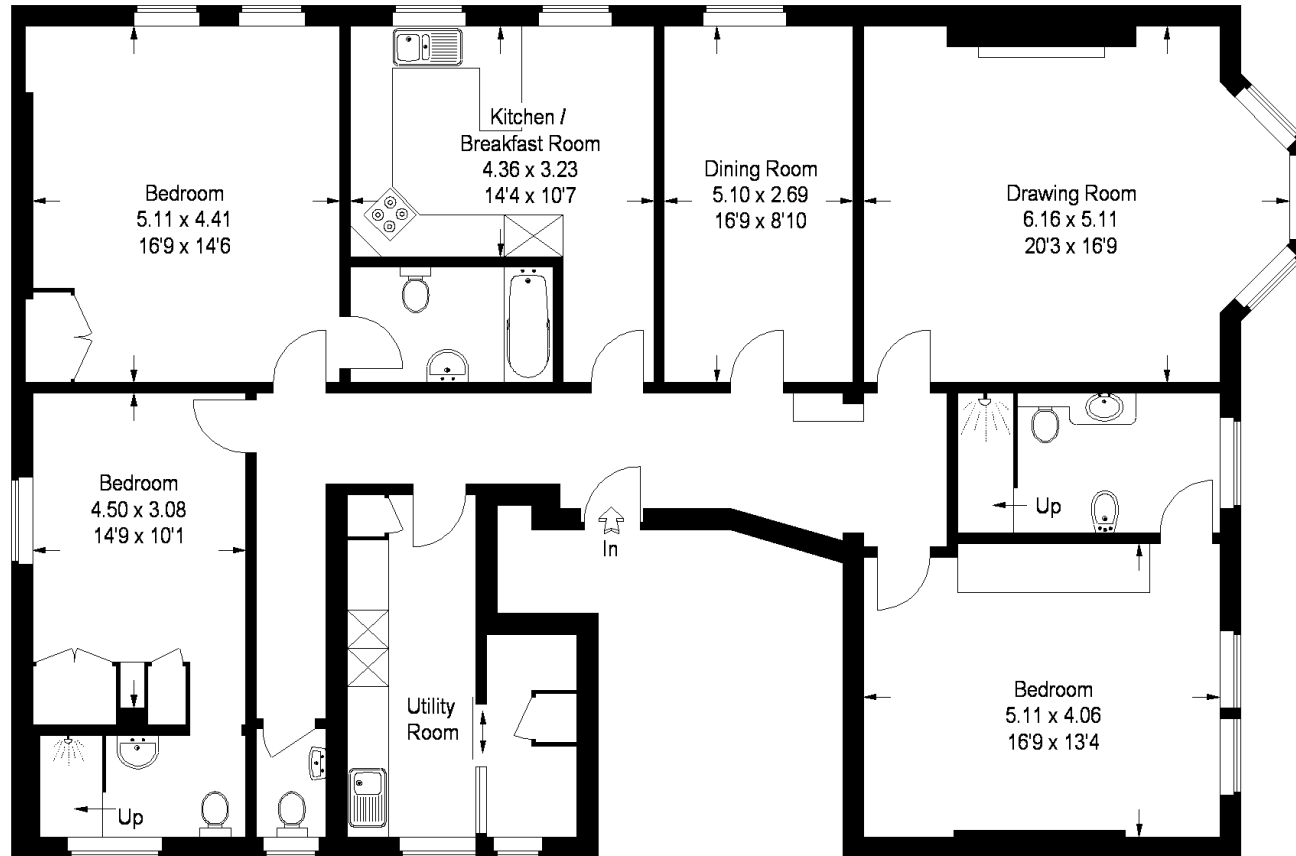
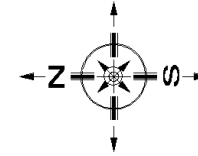
## Local Authority

Brighton and Hove Council Grand Avenue, Hove,  
East Sussex O1273 290 000



# Kings Gardens

Approximate Gross Internal Area :-  
178 sq m / 1916 sq ft



## Second Floor

FLOORPLANZ © 2012 0845 6344080 Ref 101916

This plan is for layout guidance only. Not drawn to scale unless stated. Windows & door openings are approximate. Whilst every care is taken in the preparation of this plan, please check all dimensions, shapes & compass bearings before making any decisions reliant upon them.

For clarification, we wish to inform prospective purchasers that we have prepared these sales particulars as a general guide. We have not carried out a detailed survey, nor tested the services, appliances and specific fittings. Room sizes are approximate and rounded: they are taken between internal wall surfaces and therefore include cupboards/shelves, etc. Accordingly, they should not be relied upon for carpets and furnishings. Formal notice is also given that all fixtures and fittings, carpeting, curtains/blinds and kitchen equipment, whether fitted or not, are deemed removable by the vendor unless specifically itemised within these particulars.



Viewing strictly by appointment only.

**Hamptons Brighton and Hove**

82 Church Road  
Hove, East Sussex, BN3 2EB

Sales. 01273 230230  
Hove@Hamptons-int.com

[www.hamptons.co.uk](http://www.hamptons.co.uk)

I210191045

