

HUNTERS[®]

HERE TO GET *you* THERE



Grove Vale

London, SE22 8EQ

£3,500 Per Calendar Month



Calling all medical professionals!

Large FOUR double bedroom house with private rear garden.

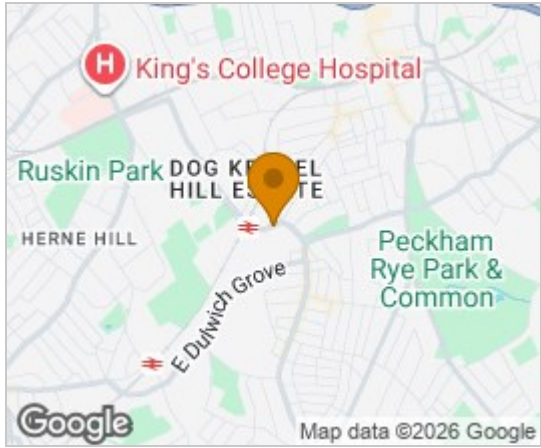
Situated in the very heart of East Dulwich, this spacious Victorian house is arranged over three floors with and benefits from 4 good sized double bedrooms, separate reception and dining area, modern fitted kitchen.

There are two contemporary bathroom on the first floor, perfect for professional sharers.

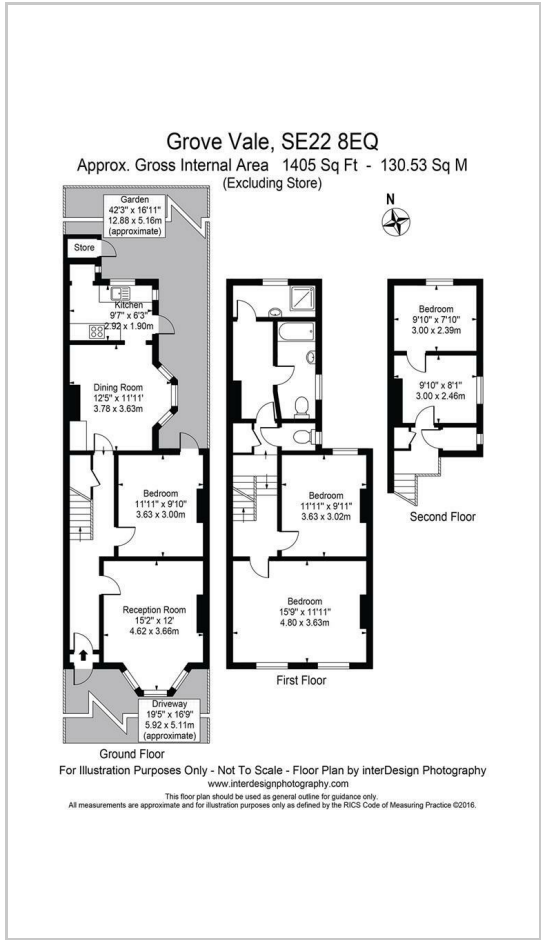
To the rear is a private garden, a real suntrap and perfect for summer entertainment.



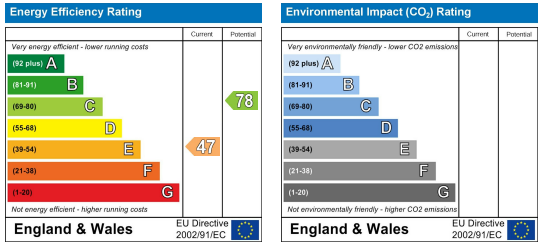
Area Map



Floor Plans



Energy Efficiency Graph



These particulars are intended to give a fair and reliable description of the property but no responsibility for any inaccuracy or error can be accepted and do not constitute an offer or contract. We have not tested any services or appliances (including central heating if fitted) referred to in these particulars and the purchasers are advised to satisfy themselves as to the working order and condition. If a property is unoccupied at any time there may be reconnection charges for any switched off/disconnected or drained services or appliances - All measurements are approximate. **THINKING OF SELLING?** If you are thinking of selling your home or just curious to discover the value of your property, Hunters would be pleased to provide free, no obligation sales and marketing advice. Even if your home is outside the area covered by our local offices we can arrange a Market Appraisal through our national network of Hunters estate agents.