

Churchview Road, TW2

£389,950

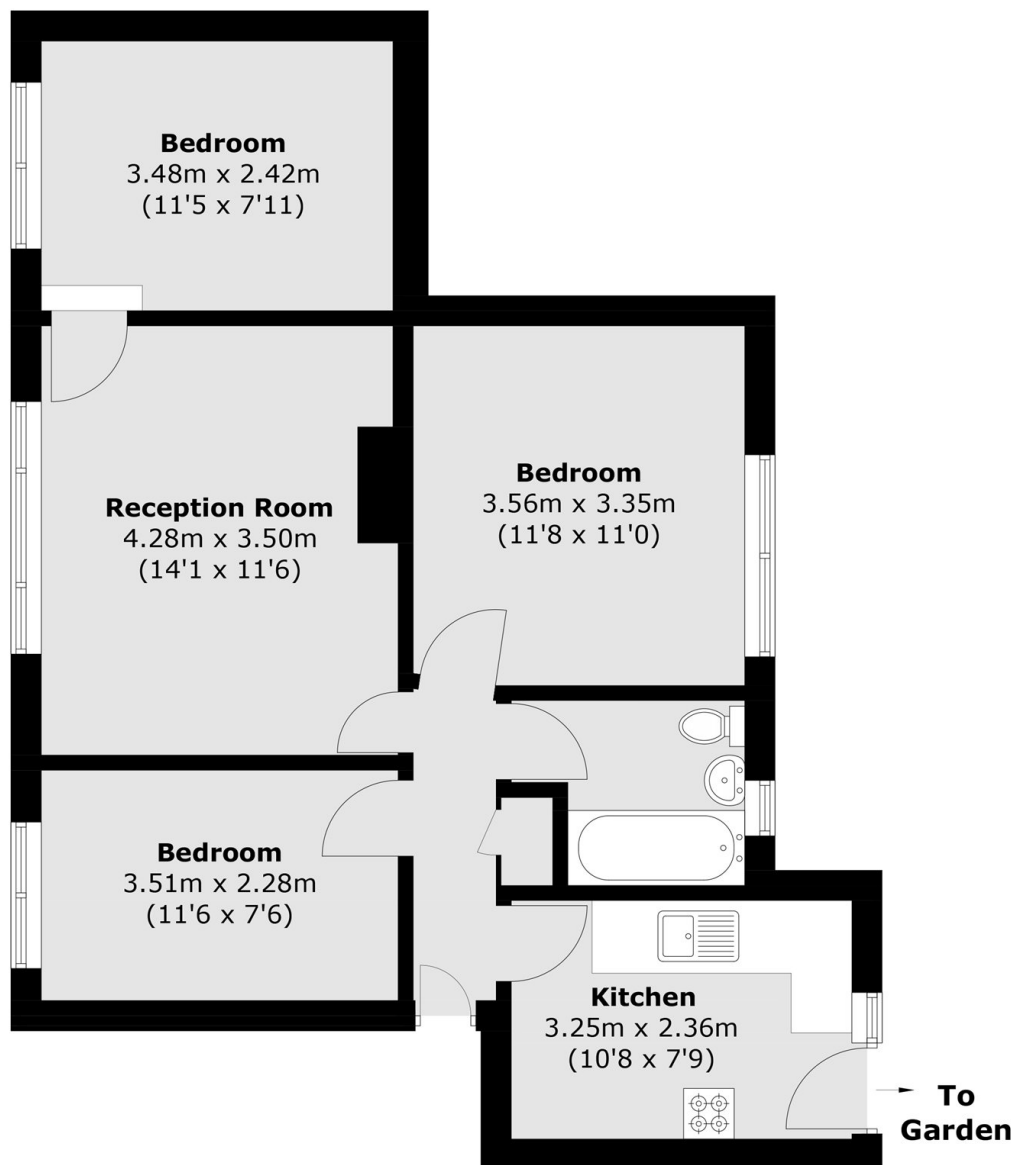
A three double bedroom ground floor apartment offered to the market with no onward chain. Benefitting from communal gardens this property is not to be missed.

Sontan Court is in a quiet residential road close to Twickenham Green and half a mile from a mainline station making it a great all rounder.

Features

- Three Double Bedrooms
- Ground Floor
- No Onward Chain
- Central Location
- Communal Gardens
- Spacious

Churchview Road, Twickenham, TW2



Total area (approx.): 62.2 sq. m (669.5 sq. ft)