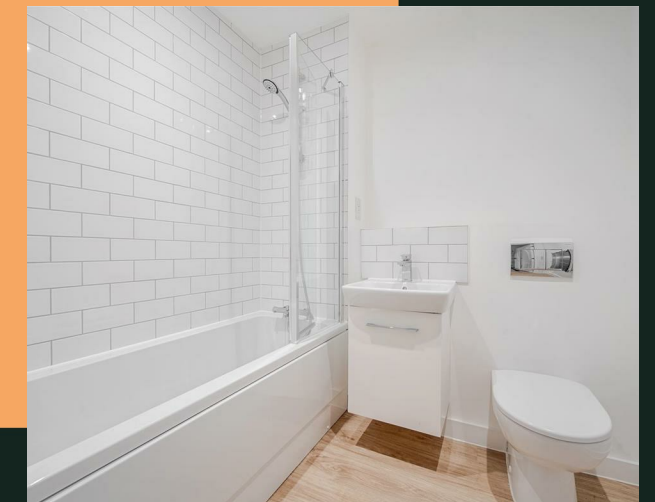
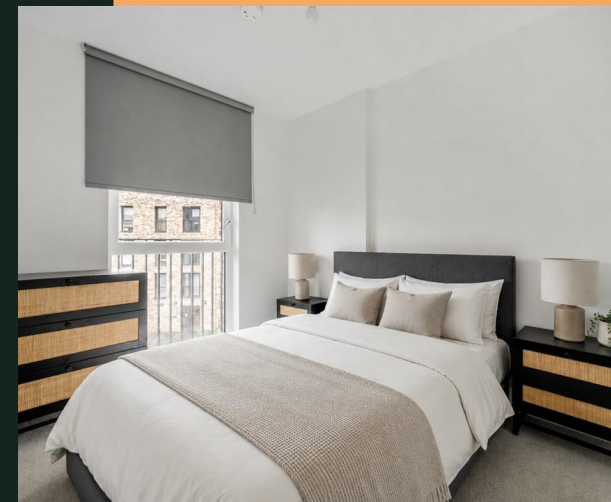


# Griffiths Close, B12

**PROPERTY ADDRESS**

Apartment 301  
3 Griffiths Close  
Birmingham  
B12 9BD

Energy Efficiency Rating		Current	Potential
<i>Very energy efficient - lower running costs</i>			
(92 plus) <b>A</b>			
(81-91) <b>B</b>		84	84
(69-80) <b>C</b>			
(55-68) <b>D</b>			
(39-54) <b>E</b>			
(21-38) <b>F</b>			
(1-20) <b>G</b>			
<i>Not energy efficient - higher running costs</i>			
<b>England &amp; Wales</b>	EU Directive 2002/91/EC		



- Total cost of first month: £2,046.15 (rent & deposit)
- Available from 9th July
- Furnished
- Balcony
- Gym

The furnished apartment briefly comprises of a bright and airy open plan living, kitchen and dining area with a balcony, a double bedroom with fitted mirrored wardrobe, and a bathroom. The property benefits from high spec fixtures and fittings throughout.

Belgrave Village is the new vibrant neighbourhood located in the heart of Birmingham with access to local amenities such as Edgbaston stadium, Cannon Hill Park, Moseley Village, Broadway Plaza, Brindley Place, Bullring and Grand Central. These are all easily accessible with the excellent local transport system which includes a vast range of bus services and nearby train stations such as New Street, Snow Hill and Five Ways.

The development itself has numerous facilities for residents including a concierge service, gym, co-working space and screening room, all set within attractive green surroundings.

Available from 9th July subject to acceptable referencing.

Rent: £950 per calendar month  
Holding deposit: £219.23  
Deposit: £1,096.15

\*Please note the photos are of a similar apartment in Belgrave\*



Your Text Here

