

**Head Office:**  
Dixon Kelley Estate Agents  
1 Penn Court  
Station Road, West Moors  
Dorset. BH22 0JJ

# DORSET PARK HOMES

**DRAFT**

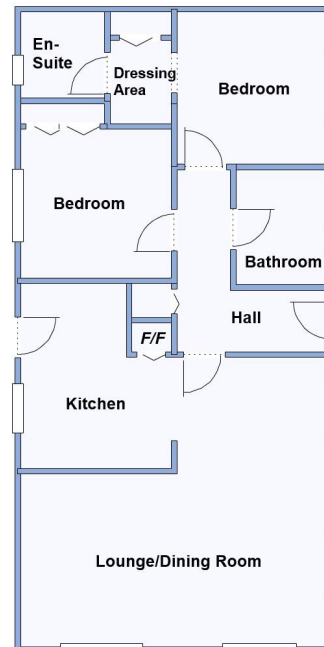
[www.dorsetparkhomes.com](http://www.dorsetparkhomes.com)

**Telephone: 01202 877511**

**67 The Avenue, Oaktree Park, St Leonards, Ringwood. BH24 2RJ**



**New Luxury Oakgrove 'The Meadow' Park Home—Fully Furnished**



This drawing has been prepared for diagrammatic purpose only. Not to scale.

## 2-Bedroom Park Home - approx 40' x 20'

**Accommodation & approximate room dimensions:**

- **Entrance Hall:** Cloaks cupboard.
- **Kitchen:** approx 9'5" x 9'1". Superb kitchen having an excellent range of base & wall cupboards. Built-in oven, hob & cooker hood. Integrated fridge/freezer, dishwasher & washing machine. Cupboard housing combination gas boiler. Vaulted ceiling. Door to garden.
- **Lounge/Dining Room:** aprox 18'9" x 16'8"max. Feature fireplace.
- **Bedroom 1:** approx 9'3" x 9'1" PLUS:
- Dressing Area with fitted wardrobes
- En-Suite Shower Room
- **Bedroom 2:** approx 10'6" x 9'1". Fitted wardrobe
- **Bathroom:** Comprising panelled bath. Vanity wash basin & WC. Chrome towel rail.
- Central Heating, Double-Glazing & LED Lighting
- Parking on Plot + Garden & Gated rear access.
- Age Restriction 50+ Pets Considered
- Residents Members Club on Park
- Popular Park between Ringwood & Ferndown and adjacent to protected forestry land. Useful convenience store in neighbouring holiday park.

## 'Popular 'Pet Friendly' Park



**Pitch Fee: approx £250 per month**

**Subject to Annual Review**

**Council Tax Band: 'A'**

**Tenure: 1983 Mobile Homes Act Agreement**

**Price: £240,000**

**VIEWING STRICTLY BY APPOINTMENT WITH THE VENDOR'S AGENT Dorset Park Homes 01202 877511**

**IMPORTANT NOTE:** These particulars are believed to be correct but their accuracy is not guaranteed. They do not form part of any contract. Nothing in these particulars shall be deemed to be a statement that the property is in good structural condition or otherwise, nor that any of the services, appliances, equipment or facilities are in good working order or have been tested. Purchasers should satisfy themselves on such matters prior to purchase Ref.W05086

*The recommended specialist in Park Home sales*  
Partner: Simon Dixon

