



# Camden Street

London, NW1

Asking Price £765,000

A beautifully renovated two-bedroom period home arranged over two floors, offering a thoughtful blend of contemporary design and classic character. The ground floor features a spacious reception room leading through to a sleek open-plan kitchen/dining area, fully fitted with integrated appliances, quartz worktops, and direct access to a generous and utterly charming private garden. Upstairs, the property comprises a well-proportioned principal bedroom, a second bedroom and a stylish bathroom finished with high quality tiling and underfloor heating. The property, accessed via its own entrance, has undergone a comprehensive refurbishment, including engineered oak flooring, zoned underfloor heating throughout the ground floor, bespoke cabinetry, and premium fixtures and fittings. Further benefits include bespoke timber sash windows, a modern boiler system, and excellent built-in storage, making this a turnkey home finished to an exceptional standard.

**CHESTERTONS**



# Camden Street

London, NW1

- Two Bedrooms
- Period features
- Private garden
- Own entrance
- Great entertaining space



The property has easy access into City and West End, as well as close proximity to Regent's Park, Camden Town and Kentish Town High Street. Camden Town Tube Station (Northern Line) is close by. Kings Cross is in close proximity offering amazing shops/cafe/restaurants and fantastic transport links.

**Tenure:** Leasehold with 86 years remaining  
**Service Charge:** £964 per annum  
**Ground Rent:** £10 per annum  
**Local Authority:** Camden  
**Council Tax Band:** E

Score	Energy rating	Current	Potential
92+	A		
81-91	B		
69-80	C	74 C	79 C
55-68	D		
39-54	E		
21-38	F		
1-20	G		

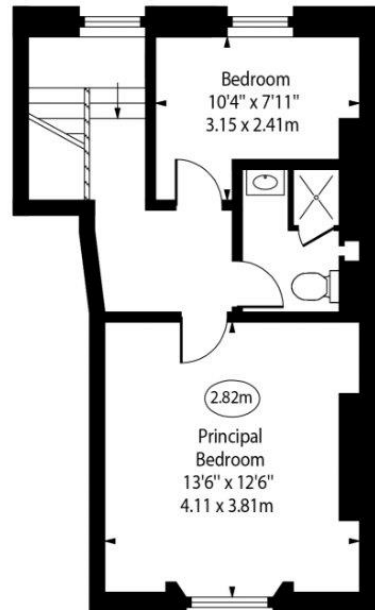
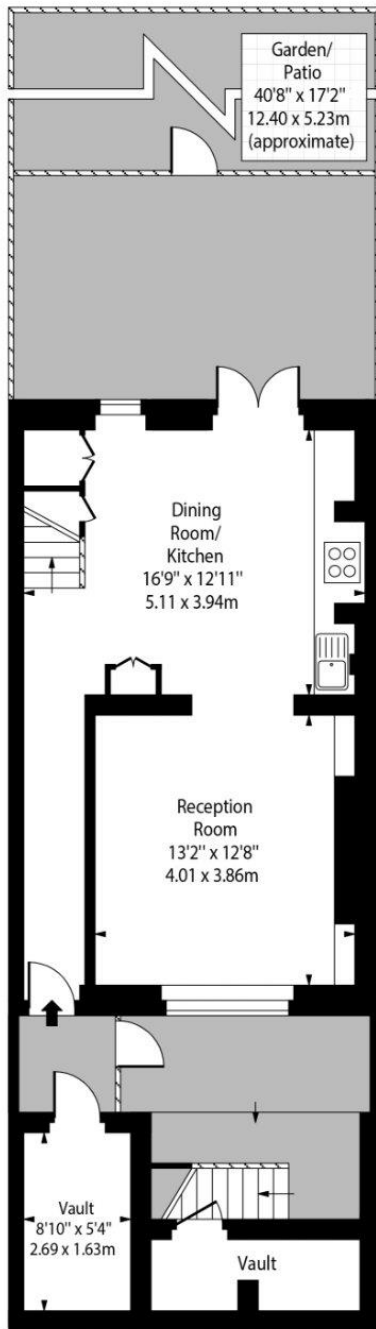
### *Chestertons Camden & Kentish Town Sales*

99-101 Parkway  
Camden  
London  
NW1 7PP  
camden@chestertons.co.uk  
020 7267 2053  
chestertons.co.uk

Camden Street



○ - Ceiling Height



Lower Ground Floor

Gross Internal Area - 452 Sq Ft - 41.99 Sq M

Upper Ground Floor

Gross Internal Area - 373 Sq Ft - 34.65 Sq M

Approx Gross Internal Area 825 Sq Ft - 76.64 Sq M

(Excluding Vaults)

Every attempt has been made to ensure the accuracy of the floor plan shown. However, all measurements, fixtures, fittings, and data shown are approximate interpretations and for illustrative purposes only. Measured according to the RICS. Not To Scale.

[www.goldens.co.uk](http://www.goldens.co.uk)

Ref. No. 031379K

