



Flat

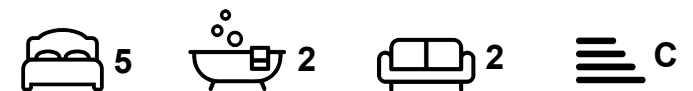
FLAT 15, HEADINGLEY RISE WELTON ROAD, HYDE PARK, LEEDS, LS6 1EE

Per Person Per Week

£545 Per

FEATURES

- 5 Bedrooms
- Hyde Park
- Gas C/H
- Flat
- Furnished Property



SJM ©
PROPERTIES

5 Bedroom Flat located in Leeds

Call us on

01132782201

phil@sjm-properties.com

sjm-properties.com

Council Tax Band

B

Rooms available in a 5 bedroom apartment set in a gated complex a short walk from the University of Leeds.

Recently redecorated and 2 newly renovated bathrooms.

Gated complex with gated off street parking.

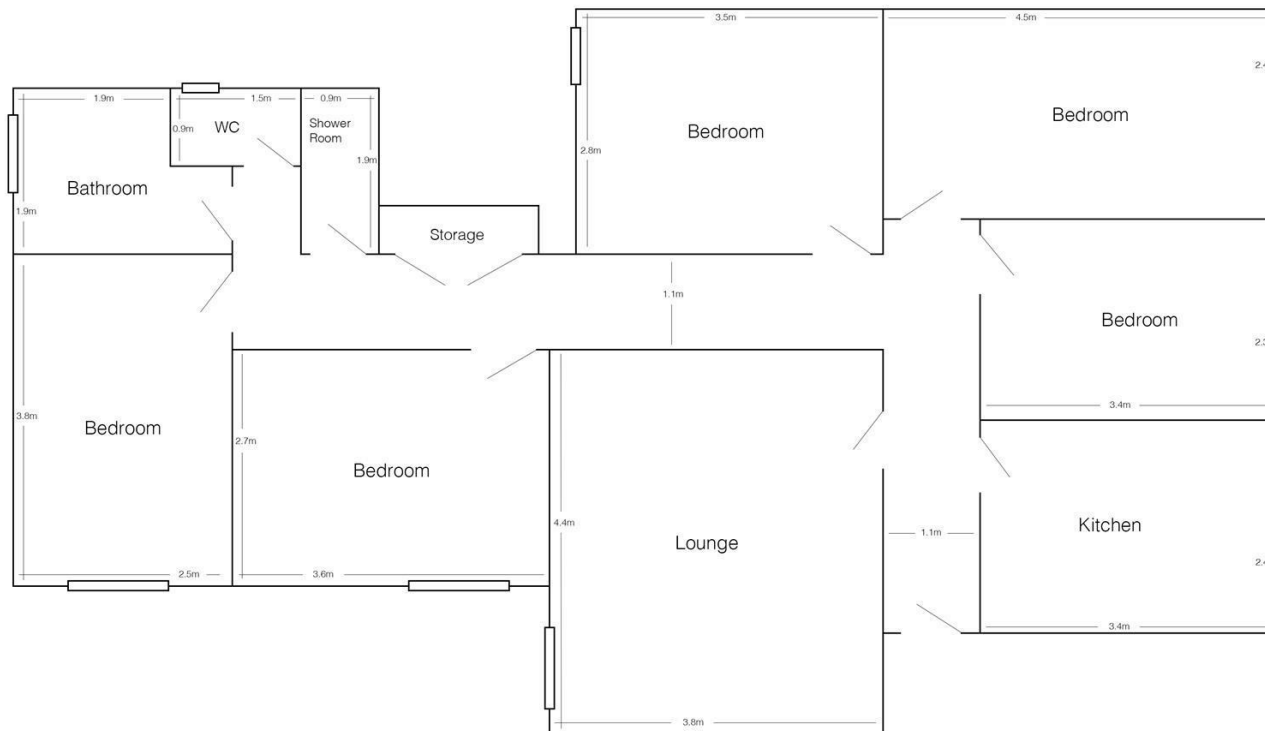
large lounge with new wood floor and media wall with wall mounted TV.

All double bedrooms furnished with robe, desk, drawers and a chair as well as a bed.

Gas central heated and double glazed in a great location close to the Uni and Brudenell shops

RENT OF £109 PER PERSON PER WEEK INCLUDES UTILITY BILLS

15 Headingley Rise
(drawing not to scale)



Energy Efficiency Rating		
	Current	Potential
Very energy efficient - lower running costs		
(92 plus) A		
(81-91) B		
(69-80) C	73	76
(55-68) D		
(39-54) E		
(21-38) F		
(1-20) G		
Not energy efficient - higher running costs		
England & Wales	EU Directive 2002/91/EC	

Agents Note: Whilst every care has been taken to prepare these particulars, they are for guidance purposes only. All measurements are approximate and are for general guidance purposes only and whilst every care has been taken to ensure their accuracy, they should not be relied upon and potential buyers are advised to recheck the measurements.

SJM [©]
PROPERTIES