



Warrington Crescent, W9

£2,077 Per week

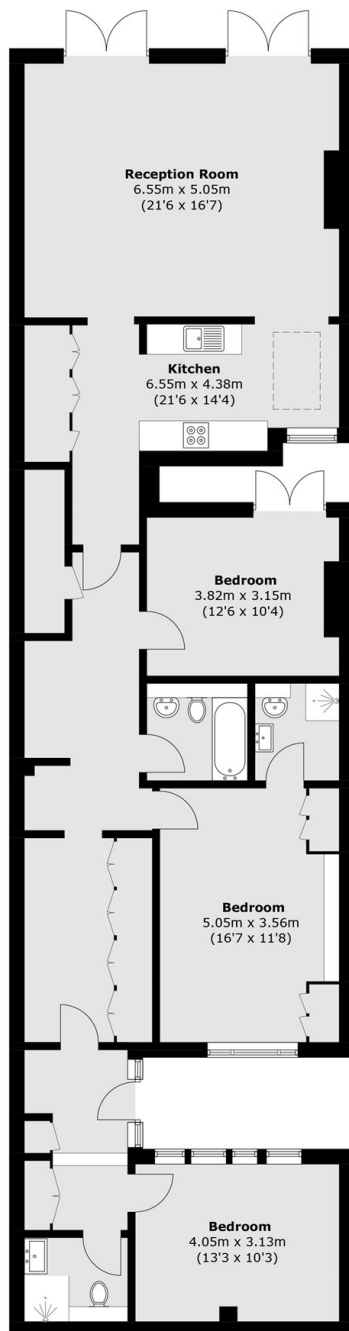
SHORT LET - A stucco-fronted three bedroom garden flat in a Georgian conversion presented in excellent condition. The property is presented in excellent condition and has high-ceilings, ample of built-in storage and wooden floors throughout. It further comprises three double bedrooms, three bathrooms (one en-suite), a study area and a semi open plan kitchen/reception room with French doors leading to a private patio garden and direct access to the highly desirable Formosa Gardens.

Warrington Crescent is one of the most popular roads in Maida Vale, tree-lined with period buildings and offering easy access to Formosa Street, Little Venice and Warwick Avenue, for a great selection of shops, bars cafés, and restaurants.

Features

- Three Double Bedrooms
- Three Bathrooms
- Direct Access To Gardens
- Private Entrance
- Study Area
- Warwick Avenue Tube

Warrington Crescent, Maida Vale, W9



Total area (approx.): 141.1 sq. m (1518.8 sq. ft)

Dexters

Maida Vale
298 Elgin Avenue
London
W9 1JS
Sales
020 7266 2020

Energy Rating: C. We aim to make our particulars both accurate and reliable. However they are not guaranteed; nor do they form part of an offer or contract. If you require clarification on any points then please contact us, especially if you're traveling some distance to view. Please note that appliances and heating systems have not been tested and therefore no warranties can be given as to their good working order.

 **RICS** | Regulated
Estate Agent
and Letting Agent

[dexters.co.uk](https://www.dexters.co.uk)