



2 FINSBURY DRIVE GRIMSBY, DN33 3RX

£275,000
FREEHOLD

A handsome four-bedroom family home offering generous living space, en-suite to the principal bedroom, double garage, off-road parking and a good-sized rear garden, ideally situated close to the hospital and local amenities.



WWW.BILTONS.CO.UK
01724 642002

2 FINSBURY DRIVE



DESCRIPTION

This well-presented, newly built four-bedroom home offers spacious and practical accommodation, ideal for modern family living.

The property comprises four well-proportioned bedrooms, including a principal bedroom with a fitted en-suite shower room. The remaining bedrooms are served by a family bathroom. On the ground floor, there is a generous lounge providing a comfortable space to relax, a separate dining room suitable for family meals and entertaining, and a well-appointed kitchen with ample storage and workspace.

Externally, the home benefits from a double garage, additional off-road parking, and a good-sized rear garden offering plenty of space for outdoor enjoyment.

Situated close to the hospital and a range of local amenities, this attractive property combines convenience with comfortable family living.

ENTRANCE HALLWAY

LOUNGE

DINING ROOM

KITCHEN

UTILITY ROOM

DOWNSTAIRS W.C

FIRST FLOOR HALLWAY

BEDROOM ONE

ENSUITE

BEDROOM TWO

BEDROOM THREE

BEDROOM FOUR

FAMILY BATHROOM

GARDENS, PARKING AND DOUBLE GARAGE

2 FINSBURY DRIVE





2 FINSBURY DRIVE

ADDITIONAL INFORMATION

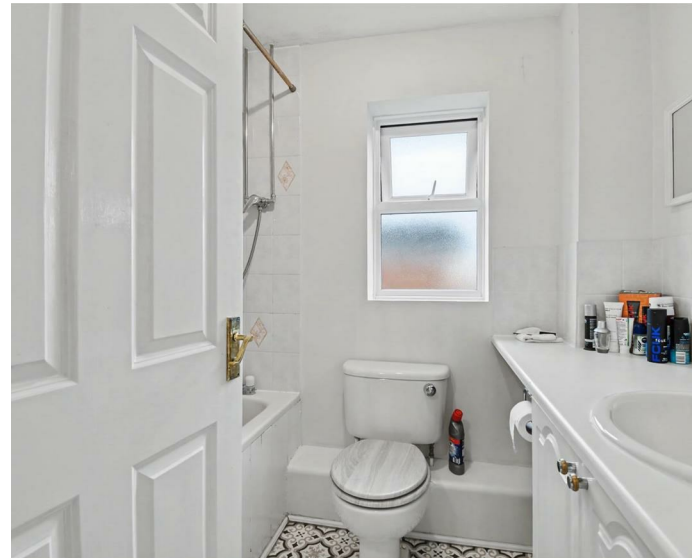
Local Authority –

Council Tax – Band E

Viewings – By Appointment Only

Floor Area – sq ft

Tenure – Freehold



Ground Floor

Approx. 57.2 sq. metres (615.2 sq. feet)



First Floor

Approx. 53.5 sq. metres (575.7 sq. feet)



Total area: approx. 110.6 sq. metres (1190.9 sq. feet)



Energy Efficiency Rating		
	Current	Potential
Very energy efficient - lower running costs		
(92 plus) A		
(81-91) B		
(69-80) C	73	78
(55-68) D		
(39-54) E		
(21-38) F		
(1-20) G		
Not energy efficient - higher running costs		
England & Wales	EU Directive 2002/91/EC	

Agents Note: Whilst every care has been taken to prepare these particulars, they are for guidance purposes only. All measurements are approximate and are for general guidance purposes only and whilst every care has been taken to ensure their accuracy, they should not be relied upon and potential buyers/tenants are advised to recheck the measurements

monique@biltons.co.uk

07808163324

<https://biltons.co.uk/>



BILTONS
THE PERSONAL AGENTS

WWW.BILTONS.CO.UK

01724 642002