



67 POPLAR GROVE NEW MALDEN, KT3 3DN

£2,750 PER MONTH

Welcome to this charming property located on Poplar Grove in the desirable area of New Malden. This delightful home boasts a generous 900 square feet of living space, making it an ideal choice for small families or those seeking a comfortable living environment.

Upon entering, you will find an inviting reception room that provides ample space for relaxation and entertaining. The open plan kitchen and dining room create a warm and welcoming atmosphere, perfect for family meals and gatherings with friends. The property features two well-proportioned bedrooms, ensuring plenty of room for everyone.

One of the standout features of this home is the lovely garden, which offers a tranquil outdoor space for enjoying the fresh air, gardening, or simply unwinding after a long day.

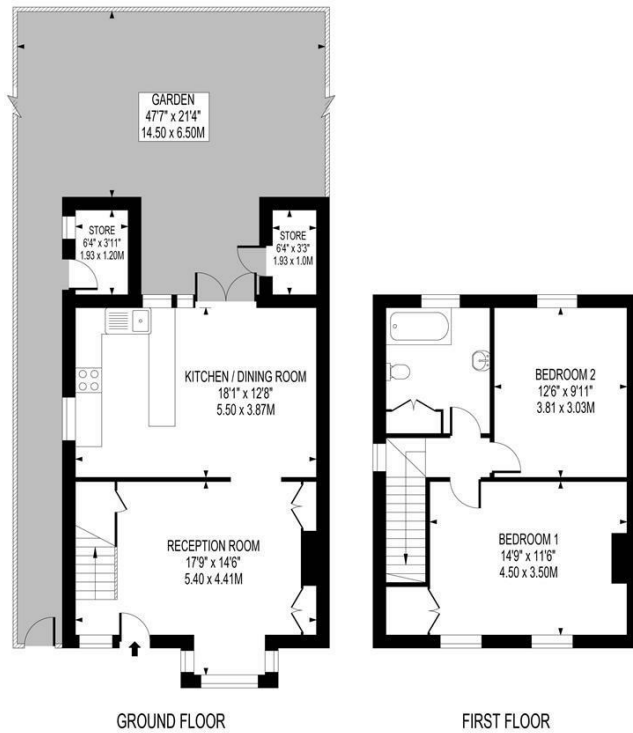


POPLAR GROVE

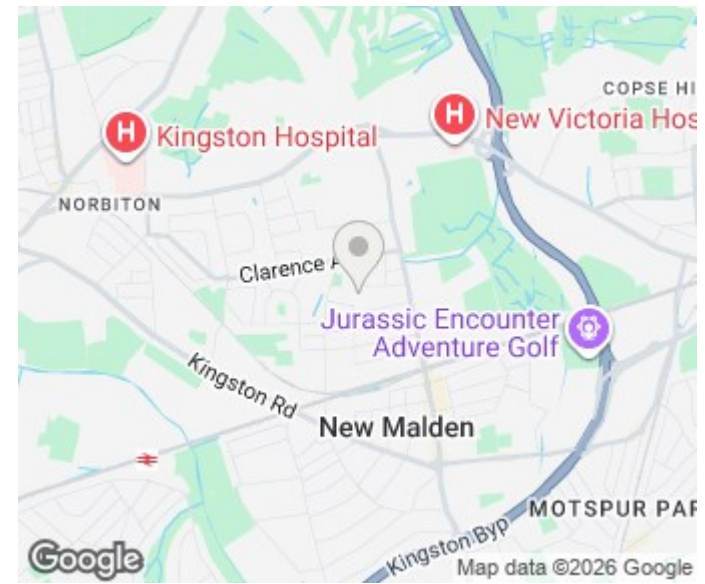
APPROXIMATE GROSS INTERNAL FLOOR AREA : 900 SQ FT - 83.6 SQ M

(EXCLUDING STORE)

STORE AREA : 45 SQ FT - 4.2 SQ M



FOR ILLUSTRATION PURPOSES ONLY
 THIS FLOOR PLAN SHOULD BE USED AS A GENERAL OUTLINE FOR GUIDANCE ONLY AND DOES NOT CONSTITUTE IN WHOLE OR IN PART AN OFFER OR CONTRACT.
 ANY INTENDING PURCHASER OR LESSEE SHOULD SATISFY THEMSELVES BY INSPECTION, SEARCHES, ENQUIRIES AND FULL SURVEY AS TO THE CORRECTNESS OF EACH STATEMENT.
 ANY AREAS, MEASUREMENTS OR DISTANCES QUOTED ARE APPROXIMATE AND SHOULD NOT BE USED TO VALUE A PROPERTY OR BE THE BASIS OF ANY SALE OR LET.



Energy Efficiency Rating		Current	Potential
Very energy efficient - lower running costs			
(92 plus) A			
(81-91) B			85
(69-80) C			
(55-68) D		54	
(39-54) E			
(21-38) F			
(1-20) G			
Not energy efficient - higher running costs			
England & Wales		EU Directive	2002/91/EC

Agents Note: Whilst every care has been taken to prepare these particulars, they are for guidance purposes only. All measurements are approximate and are for general guidance purposes only and whilst every care has been taken to ensure their accuracy, they should not be relied upon and potential buyers/tenants are advised to recheck the measurements

Elizabeth Wightwick Bespoke Sales & Lettings
 Office 10
 60 High Street
 Wimbledon Village
 Wimbledon
 London
 SW19 5EE

020 3597 3484
 info@elizabeth-wightwick.co.uk

