



## Langney Road, Eastbourne

£800 PCM

### Key Features

- ◆ One-bedroom, top-floor flat
- ◆ Convenient town centre location
- ◆ Walking distance from shops, train station and seafront
- ◆ Large living space
- ◆ Double Glazing
- ◆ EPC rating D

1  1  1 

  
Local knowledge, national reach



Northwood are delighted to welcome to market this spacious one-bedroom first-floor apartment in the heart of Eastbourne.

Accommodation comprises large living room, double bedroom, fitted kitchen, WC and bathroom with shower over bath.

Further benefits include: gas central heating, double-glazing and high ceilings.

Situated on the edge of the town centre, this lovely first floor flat is minutes from the main shops, local amenities and Eastbourne's fabulous Victorian seafront and pier. An easy walk to the mainline train station makes this apartment perfectly located to sample the best the Sunshine Coast has to offer.





Please view the immersive 3D tour for an in-depth view of this property:  
<https://tour.giraffe360.com/44aca06d07684c129034d3eaefa33e9c>

Mobile Phone Coverage and Broadband speeds can be checked on the Ofcom website:  
<https://checker.ofcom.org.uk/>

Holding Deposit: £200.00 (one week's rent)

Full Deposit: £1005.00 (Holding Deposit + extra 4 weeks' rent to make a 5 week deposit)

1st month's rent + Full Deposit: £1880.00

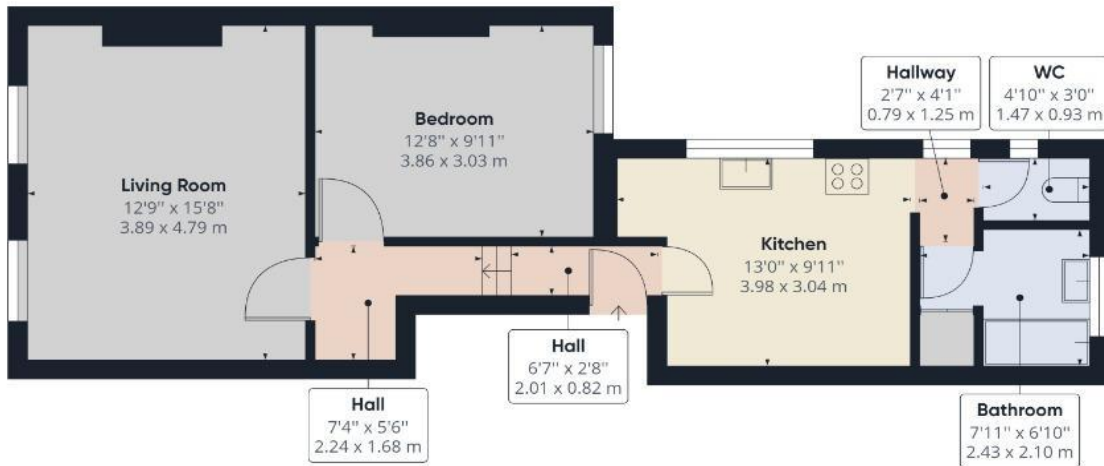
Total household income must exceed £26,250.00 to be considered for this property.

This property is managed by Northwood, should a maintenance issue arise, it can be reported 24 hours a day via our website.









Approximate total area<sup>(1)</sup>  
573.49 ft<sup>2</sup>  
53.28 m<sup>2</sup>

(1) Excluding balconies and terraces

While every attempt has been made to ensure accuracy, all measurements are approximate, not to scale. This floor plan is for illustrative purposes only.

GIRAFFE 360



SEE MORE ONLINE

## Northwood (Eastbourne) Ltd

81-83 South Street  
Eastbourne  
BN21 4LR  
01323 744544  
eastbourne@northwooduk.com