
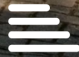


ALLDAY
& MILLER



Lower Road, Uxbridge, UB9 5EB
£985,000

 5  3  3  C



Lower Road, Uxbridge, UB9 5EB

£985,000

- Impressive Five Bedroom Detached Home
- Two Large Out Buildings
- 32 Ft Dual Aspect Living Room Living Room
- Large Driveway With Ample Parking
- Easy Reach Of Denham Station
- Three Bathrooms - Two Ground Floor W.Cs
- 2692 Sq Ft /250 Sq M
- Social Kitchen/Breakfast Room Space
- Beautiful Sun Trap Garden
- Utility Room

Description

A beautifully presented and well-maintained family home offering spacious and versatile accommodation throughout. The ground floor briefly comprises a welcoming reception/dining room, a second reception room which can be used as an additional bedroom or sitting room, a utility room, two downstairs WCs, and a stylish modern fitted kitchen with ample storage and workspace.

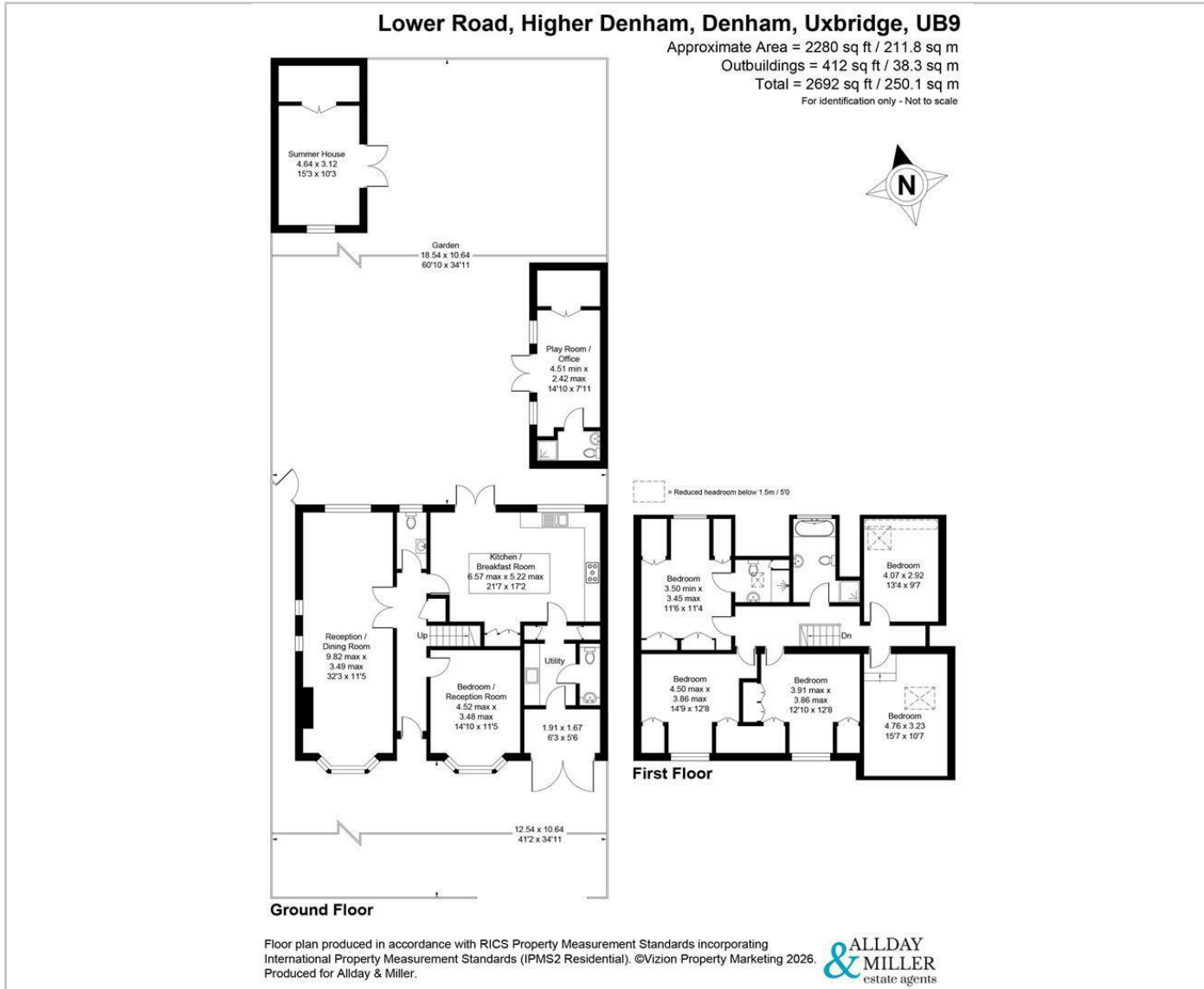
To the first floor are four generously sized double bedrooms and a smaller bedroom, along with two well-appointed bathrooms. Externally, the property benefits from a front driveway providing off-road parking, a garage, and a private rear garden perfect for entertaining and outdoor enjoyment. The garden also features an office outbuilding complete with its own bathroom and a second outbuilding offering flexible use.

Situation

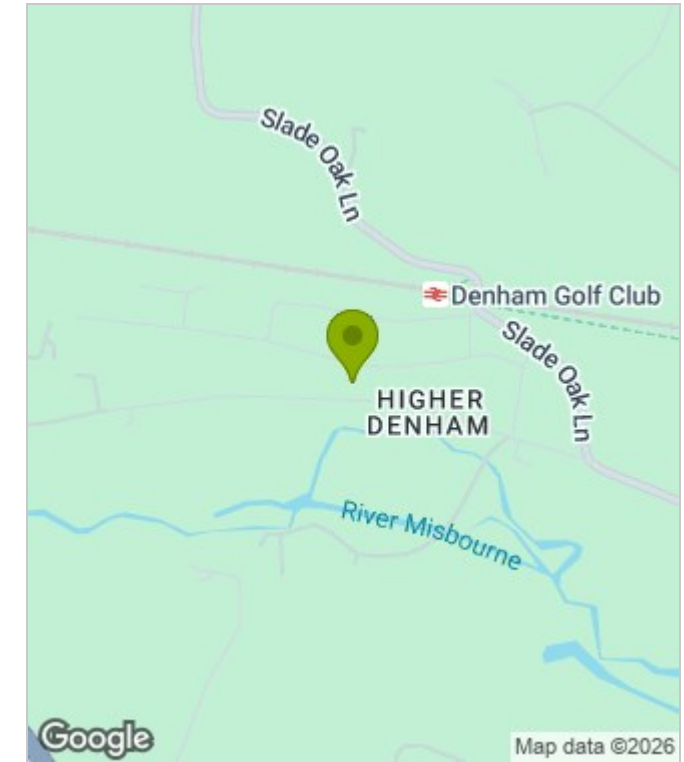
Higher Denham is a friendly and diverse community nestled within the Colne Valley and boasts a picturesque semi-rural location. There is a community village hall and social club, and a popular children's playground area and outside gym for adults on the community field. For the commuters Denham Golf Club station, which is just a few minutes walk, is on the Chiltern line with direct access to Marylebone or towards High Wycombe and onwards. The M40/M25 are just a short drive away. In Gerrards Cross, three miles away, you will find independent boutiques, coffee shops, Waitrose and Tesco. For more extensive shopping Uxbridge town centre is approx. 4.3 miles by car or bus. Historic Denham Village is nearby and has a selection of country pubs with numerous footpaths for walking or cycling in Denham Country Park.



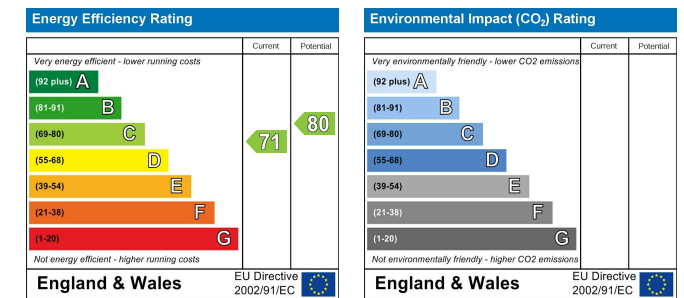
Floor Plans



Area Map



Energy Performance Graph



These particulars, whilst believed to be accurate are set out as a general outline only for guidance and do not constitute any part of an offer or contract. Intending purchasers should not rely on them as statements of representation of fact, but must satisfy themselves by inspection or otherwise as to their accuracy. No person in this firm's employment has the authority to make or give any representation or warranty in respect of the property.

www.alldayandmiller.co.uk

192 High Street, Uxbridge, Middlesex, UB8 1LB

T: 01895 641 000 | E: sales@alldayandmiller.co.uk
 T: 01895 379 549 | E: lettings@alldayandmiller.co.uk