



Abercorn Place, NW8

£1,150,000

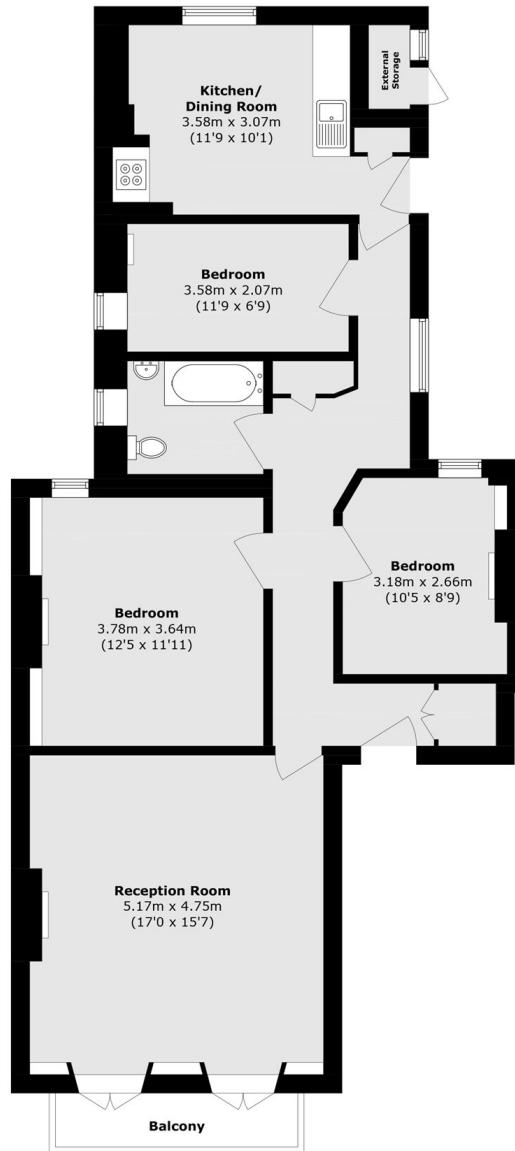
A bright three bedroom apartment set within an attractive period conversion, featuring high ceilings and a separate kitchen. The property is offered chain free and provides well balanced accommodation throughout.

Situated in a desirable St John's Wood location, the property is close to the boutiques, cafés, and restaurants of St John's Wood High Street. Regent's Park and Primrose Hill are both within easy reach. Transport links include St John's Wood underground station (Jubilee line) and Swiss Cottage underground station (Jubilee line).

Features

- Three Bedrooms
- Share of Freehold
- Chain Free
- High Ceilings
- Period Conversion
- First Floor

Abercorn Place, London, NW8



First Floor

Total area (approx.): 90.7 sq. m (976.3 sq. ft)
Balcony area (approx.): 3.4 sq. m (36.6 sq. ft)
External Storage area (approx.): 1.2 sq. m (12.9 sq. ft)