

5 Moles Cottage is a charming Grade II listed mid-terrace thatched cottage in need of renovation - located in the heart of Exminster village, with all local amenities on your doorstep. Believed to date back to the early 17th century, the property retains many original features, including exposed beams and a large inglenook fireplace. The accommodation offers a spacious living room, kitchen/dining area, utility, and ground-floor bathroom, with two generous bedrooms on the first floor. Located close to the property is a large garden, perfect for relaxing or entertaining. A wonderful opportunity for those who appreciate period charm and rustic character, with scope for sympathetic restoration to create a truly special home. Chain Free.

Moles Cottages
Exminster O.I.E.O. £180,000

West of 

Moles Cottages, Exminster O.I.E.O. £180,000

Charming Grade II listed mid-terrace thatched cottage | Located in the centre of Exminster village | Grade II Listed and believed to date back to the early 17th century | Retaining many original period features | Spacious living room with large inglenook fireplace | Kitchen/dining room, utility area, and ground-floor bathroom | Two generous bedrooms on the first floor | Detached large garden ideal for relaxing or entertaining | Full of character and rustic charm throughout | Excellent potential for sympathetic restoration or enhancement

PROPERTY DETAILS:

APPROACH

Part glazed front door opening onto the living room.

LIVING ROOM

19' 0" x 17' 9" (5.79m x 5.41m) (max) A wonderful characterful room with a window to the front access and features an abundance of original features including exposed beams and timbers, plus a large inglenook fireplace. Doors leading to the staircase and kitchen/dining room. Plus an under stair storage cupboard.

KITCHEN/DINING ROOM

10' 11" x 9' 5" (3.07m x 2.87m) Good sized kitchen space with two windows to the rear and outlook over the gardens. Range of fitted base units in wood effect finish with roll-edge worktops and inset stainless steel sink. Space for slot-in electric cooker. Space for under worktop appliance. Range of fitted shelving. Floorstanding electric night storage heater. Door leading to a utility room.

UTILITY ROOM

9' 2" x 4' 4" (2.79m x 1.32m) Useful utility with window and door to rear access. Built-in storage cupboard and worktop with space and plumbing under for washing machine. Fitted shelving. Door to bathroom.

BATHROOM

9' 2" x 5' 6" (2.79m x 1.68m) Ground floor bathroom with white suite comprising: low level w.c., pedestal hand wash basin and bath with tiled surround, and mixer tap with shower head attachment. High level window to side with obscure glass. Electric towel rail. Built-in cupboard complete with shelving and housing the hot water tank. Wall mounted electric fan heater. Extractor fan.

FIRST FLOOR

STAIRS/LANDING

Stairs lead up from the living room to the second bedroom.

BEDROOM 2

19' 0" x 12' 1" (5.79m x 3.68m) (max) Spacious double bedroom with window to front aspect with deep sill. Wonderful high vaulted ceiling with exposed beams and timbers. Feature fireplace with stone hearth and open grate. Freestanding electric night storage heater. Door to bedroom 1

BEDROOM 1

17' 5" x 14' 4" (5.31m x 4.37m) (max) Wonderful characterful room with high vaulted ceiling with exposed timbers and window to front aspect. Further exposed wall timbers and fitted shelving.

OUTSIDE

REAR

A small pathway leads across the rear of the property with a gate offering right of way access to the side alley.

DETACHED GARDEN

Some of Moles Cottages have detached gardens which can be accessed via a walkway through the terrace and up to the garden areas. No 5 benefits from a large garden space which at present is overgrown but is a lovely space and would make a wonderful garden.

AGENTS NOTES

To the best of the Vendors knowledge they have advised the following:

Tenure: Freehold.

Council Tax Band: C

Council: Teignbridge District Council

Parking: On street parking

Garden: Detached garden near property

Electricity: Mains

Gas: No mains gas to the property

Heating: Electric heating

Water Supply: Mains

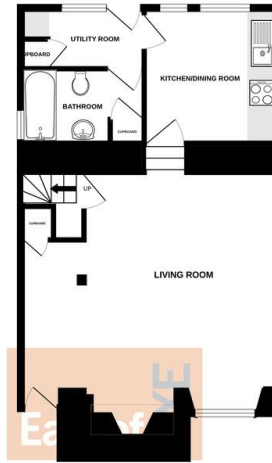
Sewerage: Mains

Broadband: Standard - Highest available download speed is 4Mbps and Highest available upload speed is 0.5

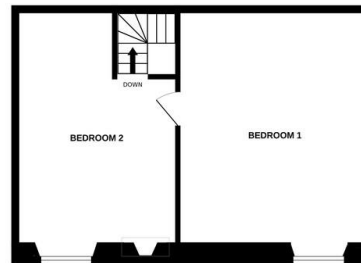
Mbps. Faster speeds available at a cost.

Mobile Signal: Various networks currently showing as available at the property

GROUND FLOOR



1ST FLOOR



Measurements are approximate. Not to scale. Illustrative purposes only
Made with Metroplan ©2025

Energy Efficiency Rating		
	Current	Potential
Very energy efficient - lower running costs		
(92+) A		
(81-91) B		82
(69-80) C		
(55-68) D		
(39-54) E	43	
(21-38) F		
(1-20) G		
Not energy efficient - higher running costs		
England & Wales	EU Directive 2002/91/EC	
WWW.EPC4U.COM		



Agents Note: Whilst every care has been taken in the preparation of these sales particulars, they are for general guidance only. All measurements, descriptions and other details are approximate and should not be relied upon as statements of fact. Prospective purchasers must satisfy themselves, as to the accuracy of the information by inspection, measurement or otherwise. If inadvertently omitted or inaccurate details come to light after distribution, East and West of Exe reserves the right to withdraw, amend and reissue this brochure without notice or liability for any financial loss prior to exchange of contracts. East and West of Exe has no authority to make legal representations or warranties in relation to the property, including but not limited to boundaries, environmental matters, planning, building regulations and title matters, and cannot enter into any contract on behalf of the Vendor. All offers are subject to contract and the Vendor reserves the right to refuse any offer without giving reason. We do not accept responsibility for any expenses incurred by prospective purchasers at any stage of the transaction, in relation to properties that have been sold, let, or withdrawn. These particulars are prepared in accordance with the Consumer Protection from Unfair Trading Regulations (2008) and the Business Protection from Misleading Marketing Regulations (2008). Any material information known to the agent has been disclosed; however, buyers must make their own enquiries to confirm any details that are material to their purchasing decision.