



## Crossleys, Fleckney

Offers Over £280,000

An extended three-bedroom detached home located in a cul-de-sac within Fleckney. Offering a lounge diner, conservatory, fitted dining kitchen, shower room and a bathroom, plus a driveway and a garage.

Council Tax band: C

Tenure: Freehold

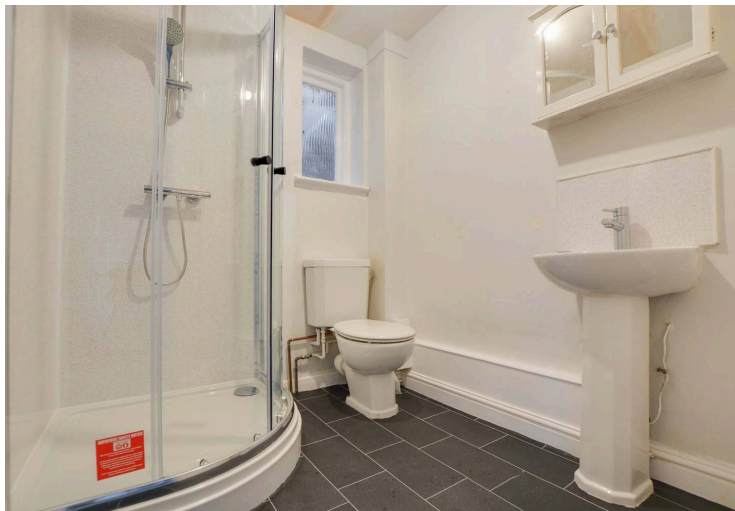
EPC Energy Efficiency Rating: D



Knightsbridge  
Estate Agents

0116 288 4888





**Entrance Hall**

Via double glazed door with double glazed window to the front elevation, door to garage, dado rail, stairs to first floor, radiator.

**Lounge Diner**

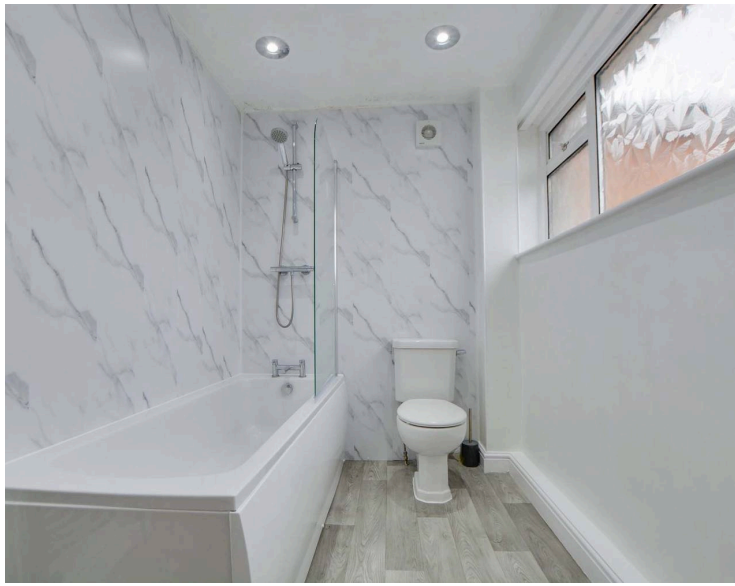
22' 4" x 14' 4" (6.80m x 4.37m)

With double glazed patio doors to the rear garden, double glazed patio doors to the conservatory, serving hatch, TV point, two radiators.

**Conservatory**

11' 6" x 11' 2" (3.50m x 3.40m)

A double glazed conservatory with double glazed French doors to the rear garden, power points, radiator.



### **Extended Fitted Dining Kitchen**

19' 0" x 10' 5" (5.79m x 3.18m)

Maximum measurements. With double glazed window to the front elevation, double glazed door to the side elevation, quarry effect ceramic tiled floor, a range of wall and base units with work surface over, stainless steel sink, drainer and mixer tap, part tiled walls, space for gas cooker, extractor hood, space for fridge freezer, spotlights, radiator.

### **Ground Floor Shower Room**

Featuring a single-glazed obscured window to the side elevation, a corner shower cubicle with a shower screen and a shower head, a low-level WC, and a wash hand basin. The room is finished with quartz-effect splashbacks.

### **First Floor Landing**

With access to the following rooms:

#### **Bedroom One**

14' 1" x 10' 1" (4.28m x 3.08m)

With double glazed window to the rear elevation, built-in wardrobes, radiator.

#### **Bedroom Two**

11' 11" x 10' 6" (3.63m x 3.19m)

With double glazed window to the front elevation, built-in wardrobes, spotlights, radiator.

#### **Bedroom Three**

13' 2" x 8' 0" (4.01m x 2.44m)

Maximum measurement. With double glazed window to the rear elevation, built-in wardrobes, radiator.

### **Bathroom**

10' 2" x 5' 11" (3.11m x 1.80m)

Comprising an obscured double-glazed window to the front elevation, a bath with a shower over and a shower screen, a low-level WC, and a wash hand basin. The room includes marble-effect splashbacks and a feature chrome wall-mounted radiator.

### **Rear Garden**

With paved patio seating area, lawn, flowerbeds and shrubs, fencing to perimeter, shed.

### **Parking 4 Vehicles**

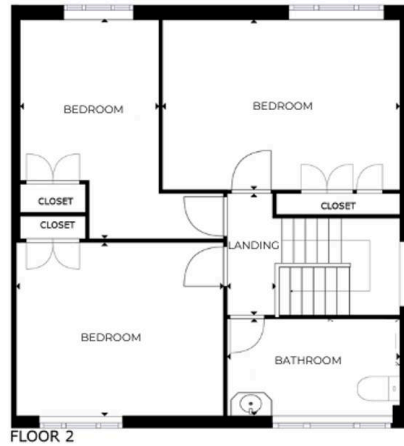
Providing off road parking.

### **Garage 1 Vehicle**

With up and over door to the front elevation.



1



FLOOR 2

**We'll keep you moving...**



We must inform all prospective purchasers that the measurements are taken by an electronic take and are provided as a guide only and they should not be used as accurate measurements. We have not tested any mains services, gas or electric appliances, or fixtures and fittings mentioned in these details, therefore, prospective purchasers should satisfy themselves before committing to purchase. Intending purchasers must satisfy themselves by inspection or otherwise to the correctness of the statements contained in these particulars. Knightsbridge Estate Agents (nor any person in their employment) has any authority to make any representation or warranty in relation to the property. The floor plans are not to scale, and are intended for use as a guide to the layout of the property only. They should not be used for any other purpose. We are required by law to conduct anti-money laundering checks on all those selling or buying a property. Whilst we retain responsibility for ensuring checks and any ongoing monitoring are carried out correctly, the initial checks are carried out on our behalf by Lifetime Legal who will contact you once you have agreed to instruct us in your sale or had an offer accepted on a property you wish to buy. The cost of these checks is £60 (incl. VAT), which covers the cost of obtaining relevant data and any manual checks and monitoring which might be required. This fee will need to be paid by you in advance of us publishing your property (in the case of a vendor) or issuing a memorandum of sale (in the case of a buyer), directly to Lifetime Legal, and is non-refundable. We will receive some of the fee taken by Lifetime Legal to compensate for its role in the provision of these checks.