



Connells

Coventry Road
Sharnford Hinckley



Property Description

Characterful three-bedroom end-terrace home situated in the heart of the popular village of Sharnford.

Occupying a prominent position on Coventry Road, this well-presented period property blends traditional charm with modern living and offers spacious accommodation arranged over two floors.

The ground floor begins with an entrance hallway giving access to a generous lounge, featuring exposed beams and a feature fireplace, creating a warm and inviting living space. To the rear is a well-proportioned open-plan kitchen/dining room, fitted with a range of units and providing ample space for family dining and entertaining. A useful separate utility room completes the ground floor accommodation.

To the first floor is a central landing leading to three bedrooms, including two large double bedrooms and a third single room ideal as a nursery, home office or dressing room. The accommodation is completed by a modern family bathroom fitted with a white suite.

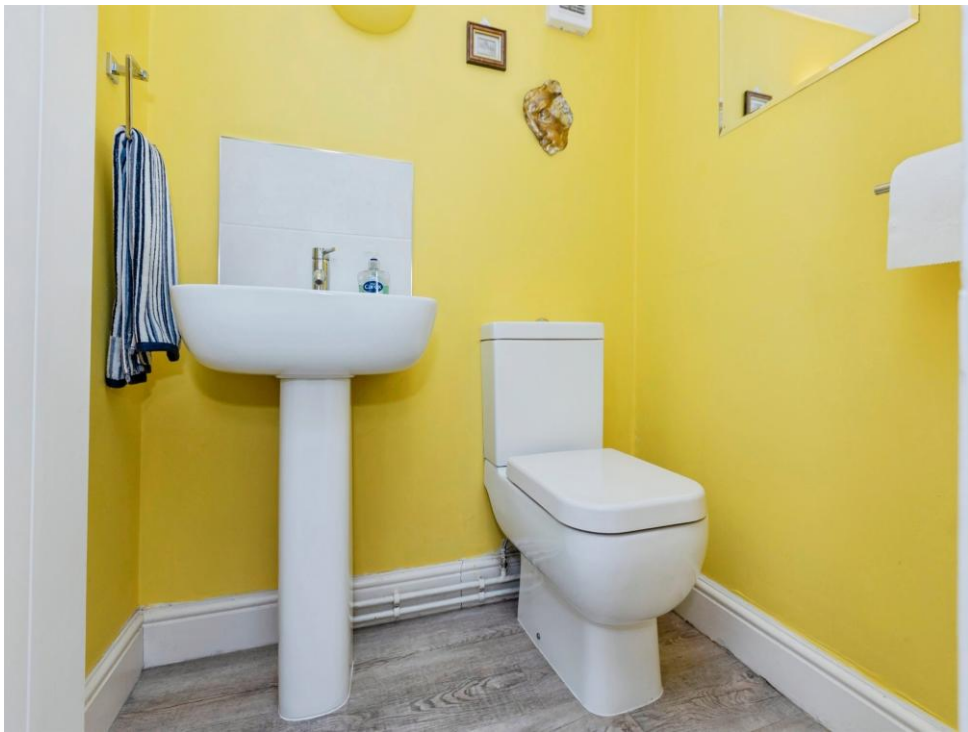
Externally, the property enjoys a low-maintenance outdoor area, improving natural light and privacy. The home is ideally located for village amenities, countryside walks and offers excellent access to Hinckley, Nuneaton, Coventry and major road links including the A5, M69 and M1.

This charming village home would be ideal for first-time buyers, downsizers or investors and internal viewing is highly recommended.

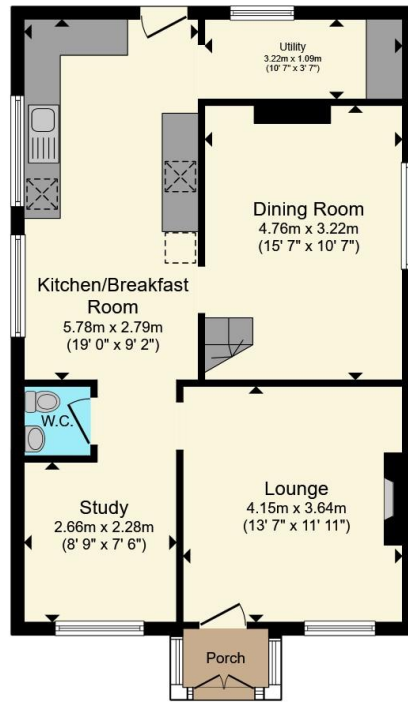
Characterful three-bedroom end-terrace home situated in the heart of the popular village of Sharnford.

Occupying a prominent position on Coventry Road, this well-presented period property blends traditional charm with modern living and offers spacious accommodation arranged over two floors.

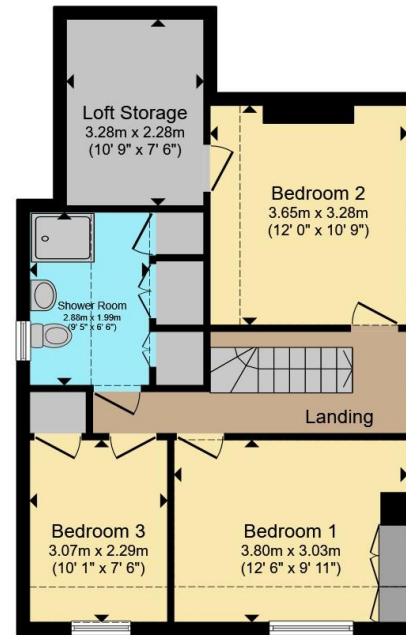








Ground Floor



First Floor

Total floor area 120.3 m² (1,295 sq.ft.) approx

This floor plan is for illustrative purposes only. It is not drawn to scale. Any measurements, floor areas (including any total floor area), openings and orientation are approximate. No details are guaranteed, they cannot be relied upon for any purpose and they do not form part of any agreement. No liability is taken for any error, omission or misstatement. A party must rely upon its own inspection(s). Powered by www.propertybox.io



To view this property please contact Connells on

T 01455 230523
E hinckley@connells.co.uk

88 Castle Street
 HINCKLEY LE10 1DD

EPC Rating: D Council Tax
 Band: D

Tenure: Freehold

view this property online connells.co.uk/Property/HIN313879



1. MONEY LAUNDERING REGULATIONS Intending purchasers will be asked to produce identification documentation at a later stage and we would ask for your co-operation in order that there will be no delay in agreeing the sale. 2. These particulars do not constitute part or all of an offer or contract. 3. The measurements indicated are supplied for guidance only and as such must be considered incorrect. Potential buyers are advised to recheck measurements before committing to any expense. 4. We have not tested any apparatus, equipment, fixtures, fittings or services and it is in the buyers interest to check the working condition of any appliances.

Connells Residential is registered in England and Wales under company number 1489613, Registered Office is Cumbria House, 16-20 Hockliffe Street, Leighton Buzzard, Bedfordshire, LU7 1GN. VAT Registration Number is 500 2481 05.

See all our properties at www.connells.co.uk | www.rightmove.co.uk | www.zoopla.co.uk

Property Ref: HIN313879 - 0003