

# Frank Harris & Co.



## Clare Court, WC1H

£500,000

Introducing this charming one bedroom apartment, located in the secure, 1930's art deco development, Clare Court. The property is set on the first floor with the convenience of lift access.

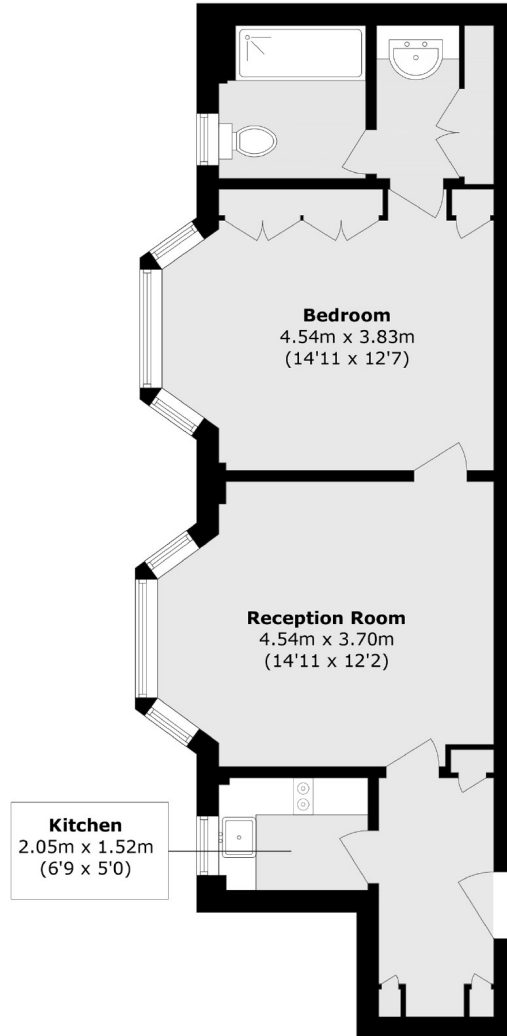


Located in the heart of Bloomsbury, this property offers convenient access to an excellent range of shops, cafés and restaurants. Euston, King's Cross, St Pancras International and Russell Square stations are all within easy walking distance.

- First Floor • Art Deco • Lease over 130 years •
- Central London • Concierge • Lift Access •



# Frank Harris & Co.



Total area (approx.): 46.6 sq. m (501.6 sq. ft)

Frank Harris & Co. Bloomsbury and Kings Cross

81 Marchmont Street,

London, WC1N 1AL

020 7405 4444

[bloomsburysales@frankharris.co.uk](mailto:bloomsburysales@frankharris.co.uk)

Energy Rating: D. We aim to make our particulars both accurate and reliable. However they are not guaranteed; nor do they form part of an offer or contract. If you require clarification on any points then please contact us, especially if you're traveling some distance to view. Please note that appliances and heating systems have not been tested and therefore no warranties can be given as to their good working order.

