



LOUGHBOROUGH PARK, SW9

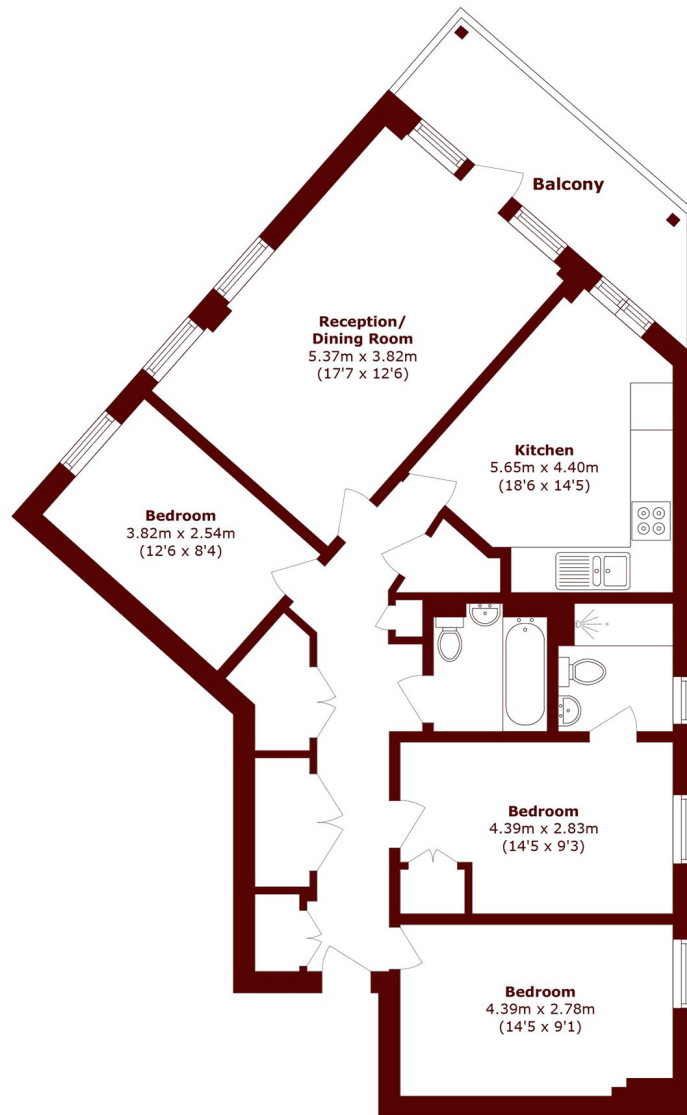
£550,000

A spacious apartment comprising of; three double bedrooms, two bathrooms, a kitchen diner with integrated appliances, and a generous reception room with direct access to a large private balcony.

Three Double Bedrooms
Two Bathrooms
Large Private Balcony

Plentiful Storage
Well Maintained
Bike Storage

STEP INSIDE LOUGHBOROUGH PARK



Total area (approx.): 90.1 sq. m (969.8 sq. ft)

Balcony area (approx.): 10.7 sq. m (115.1 sq. ft)

Brixton
020 7733 4595

Energy Rating: B We aim to make our particulars both accurate and reliable. However, they are not guaranteed; nor do they form part of an offer or contract. If you require clarification on any points then please contact us, especially if you're traveling some distance to view. Please note that appliances and heating systems have not been tested and therefore no warranties can be given as to their good working order

**MARSH &
PARSONS**