



**Victoria Crescent, Oswestry, Shropshire, SY11 2RW**

Oswestry

Offers in the Region of

**£224,950**





**Bedrooms: 3**

**Bathrooms: 1**

**Receptions: 2**

A rare opportunity to acquire a spacious family residence with expansive gardens and no onward chain. Situated in a highly desirable and sought-after residential location, this three-bedroom semi-detached home represents an excellent opportunity for those looking to secure a property that balances spacious internal living with impressive outdoor space. The ground floor is designed for modern family life, featuring a welcoming reception room that provides a comfortable space for relaxation, leading through to a functional kitchen and dining area perfect for social gatherings and family meals.

Upstairs, the residence offers three well-proportioned bedrooms, providing versatile space for a growing family or a dedicated home office. One of the most striking features of this property is the generous wrap-around garden, which offers an expansive outdoor area for gardening enthusiasts, children's play, or future entertaining.

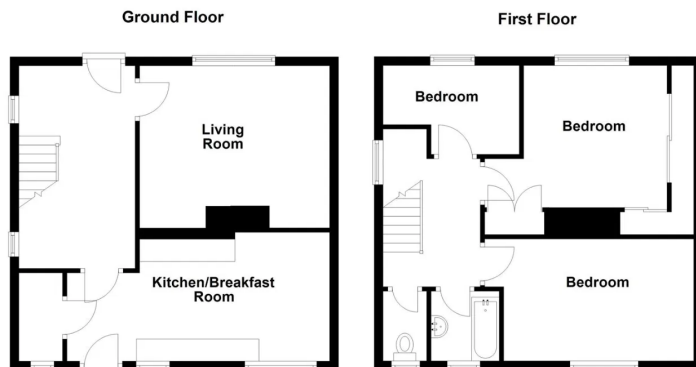
Additionally, the home includes a single garage and ample off-road parking.





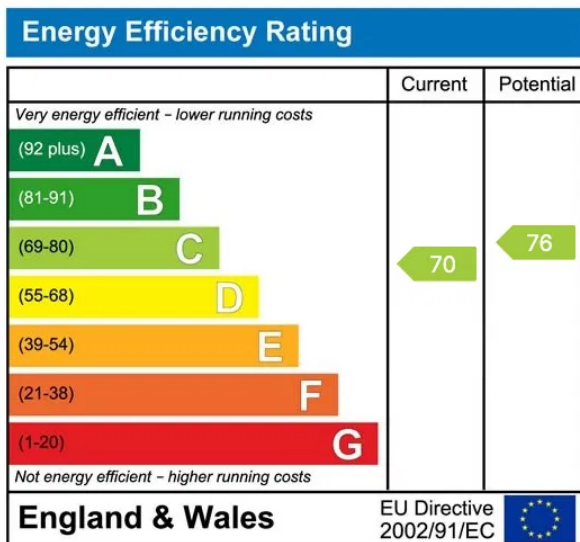






Total area: approx. 93.1 sq. metres (1002.4 sq. feet)  
 Artists impression, for illustration purposes only. All measurements are approximate. Not to Scale.  
 www.propertyphotographics.com Direct Dial 01973 205 007  
 Plan produced using PlanUp.

3 Victoria Cres KAD, \*



## Woodhead Sales & Lettings

12 Leg Street, Oswestry, Shropshire

01691 680044

[sales@woodheadsalesandlettings.com](mailto:sales@woodheadsalesandlettings.com)

<https://www.woodheadsalesandlettings.com/>



**WOODHEAD**  
OSWESTRY SALES & LETTINGS

**exp**<sup>®</sup>