



10 Hillview Drive, Hucclecote
£270,000

Farr & Farr Sales & Lettings

10 Hillview Drive

Hucclecote, Gloucester

In the heart of Hucclecote, this two bedroom semi-detached bungalow benefits from a large rear garden and would benefit from some internal modernisation.

The front door opens into an entrance hall and through to a good sized living / dining room with French doors to rear. A kitchen is off the living room with door to the rear garden.

Two bedrooms face the front aspect of the property while a bathroom is off the entrance hall.

A driveway to the front also gives side access to the deceptively large rear garden.

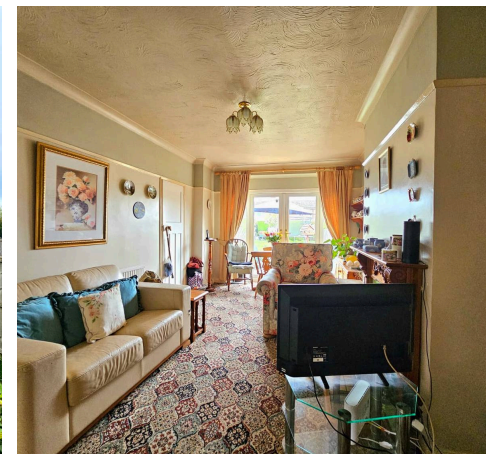
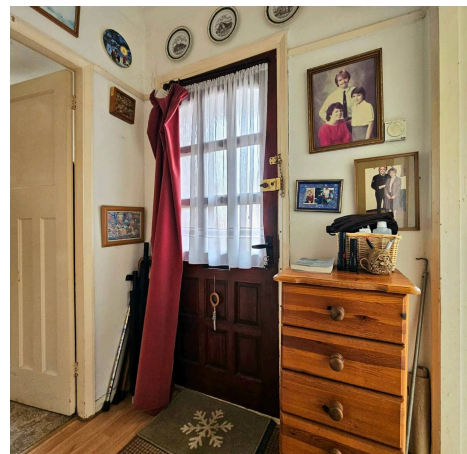
Hillview Drive is well located with a great range of easily accessible local shops, amenities and public transport links.

Council Tax band: C

Tenure: Freehold

EPC Energy Efficiency Rating: D

EPC Environmental Impact Rating:





Entrance Hall

5' 5" x 3' 11" (1.65m x 1.20m)

Wooden front door with frosted glazing. Laminate flooring.

Living / Dining Room

19' 0" x 10' 7" (5.78m x 3.22m)

Double glazed French doors to rear. Feature fireplace. Carpet. Radiator.

Kitchen

9' 7" x 6' 0" (2.91m x 1.84m)

Double glazed window to side. Range of wall, base and drawer units. Laminate worktop. Fitted oven. Fitted gas hob with extractor hood. Combi boiler. Radiator. Door to rear garden.

Bedroom One

16' 5" x 9' 7" (5.00m x 2.93m)

Double glazed bay window to front. Carpet. Radiator. Fitted wardrobes.

Bedroom Two

10' 11" x 6' 4" (3.33m x 1.94m)

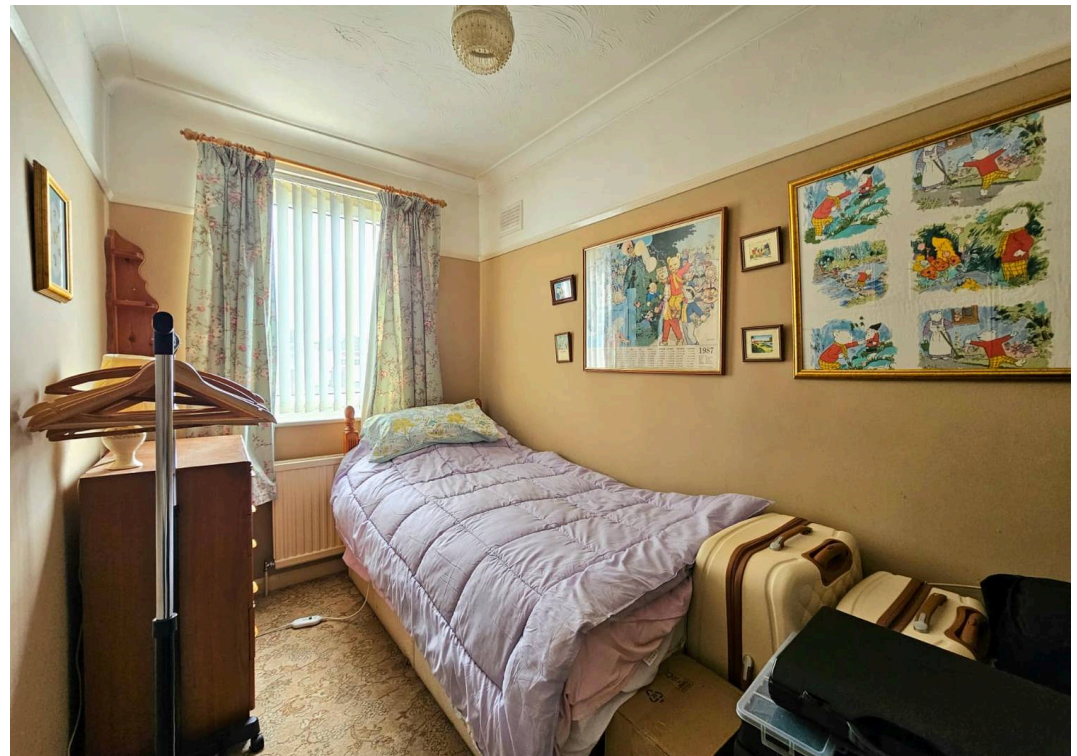
Double glazed window to front. Carpet. Radiator.

Bathroom

6' 3" x 5' 5" (1.91m x 1.65m)

Frosted double glazed window to side. WC. Basin. Enclosed shower. Storage cupboard. Part-tiled walls. Vinyl flooring. Access to loft via hatch.





REAR GARDEN

Good sized rear garden. Mostly laid to lawn with patio. Fruit trees. Fence and hedge surround. Side access.

FRONT GARDEN

Laid to slate. Brick wall and gate to front.

DRIVEWAY

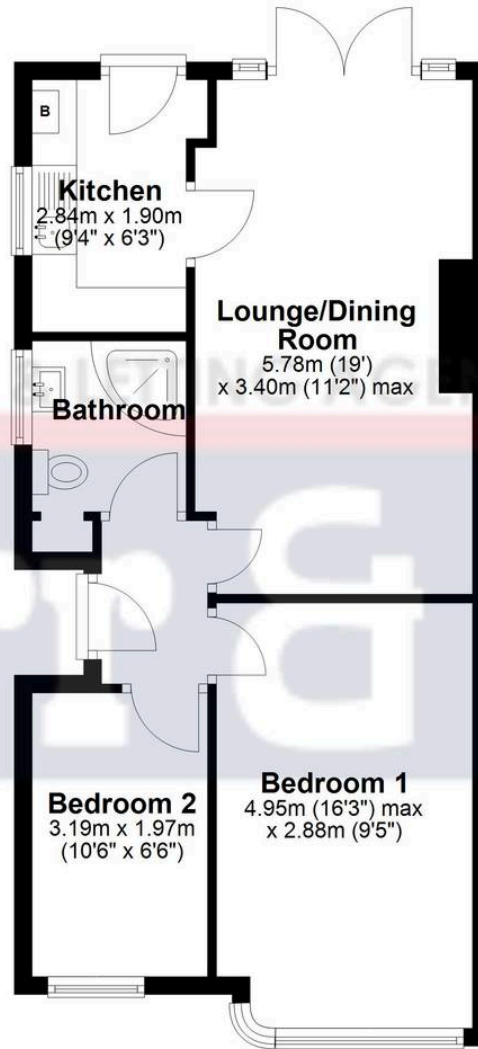
1 Parking Space

Driveway parking.



Ground Floor

Approx. 51.9 sq. metres (559.0 sq. feet)



Total area: approx. 51.9 sq. metres (559.0 sq. feet)

Farr and Farr Hucclecote

Farr & Farr, 50 Hucclecote Road - GL3 3RT

01452613355 • hucclecote@farrandfarr.co.uk •

Farr & Farr Sales Lettings