



Connells

Summit Way
Southampton



Property Description

Situated in the popular residential area of Summit Way, Midanbury, this two-bedroom flat presents an exciting opportunity for buyers looking to create a home tailored to their own taste and style.

Requiring renovation throughout, the property offers fantastic potential and would make an ideal project for investors, first-time buyers, or anyone keen to add value. With a well-proportioned layout, the flat provides a solid foundation to transform into a modern and comfortable living space.

The accommodation comprises two spacious bedrooms, both offering generous proportions and plenty of natural light, a kitchen area ready to be redesigned, and a bathroom in need of updating. Each room offers scope for improvement, allowing the new owner to fully re-imagine the interior.

Located in a convenient and well-connected part of Midanbury, the property benefits from easy access to local amenities, transport links, and nearby green spaces.

This is a fantastic opportunity to acquire a property with great potential in a sought-after location - perfect for those looking to invest or take on a rewarding renovation project.

Lounge

Double glazed windows to front and side aspect.

Kitchen

Double glazed window to front aspect. Wall and base units. Sink and drainer. Integrated electric oven and hob.

Bedroom 1

Double glazed window to side aspect.

Bedroom 2

Double glazed window to front aspect. Built-in wardrobe.

Bathroom

Double glazed window to front aspect. WC. Wash hand basin. Bath with electric shower.

Agent Notes

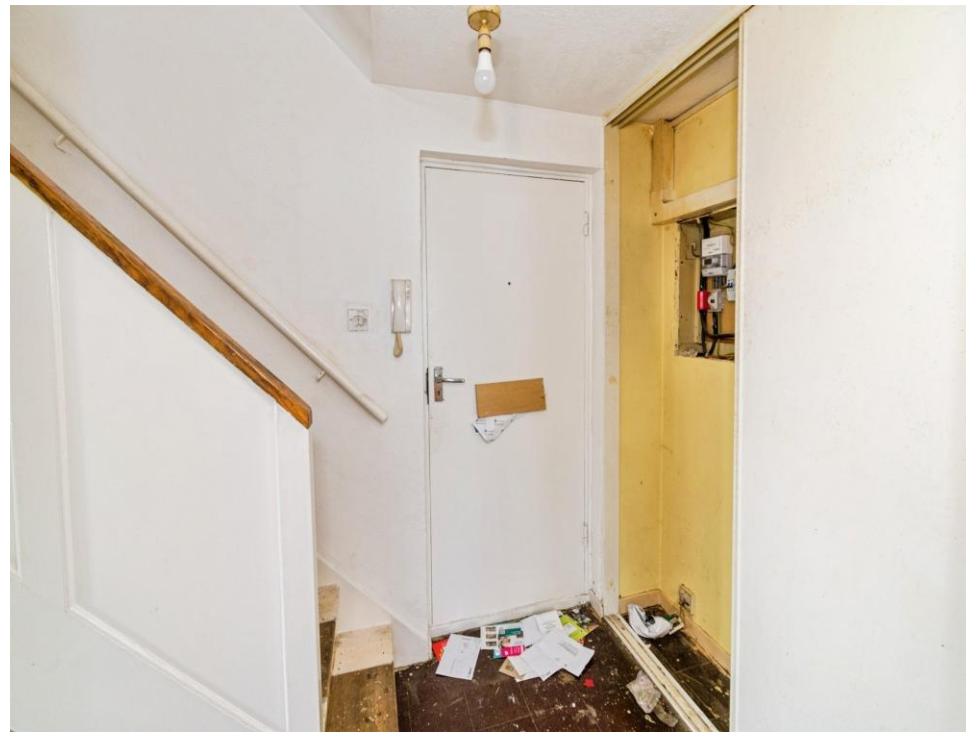
We are now in receipt of an offer for the sum of 91,500 for 27 Summit Way.

Anyone wishing to place an offer on the property should contact Connells, 2 West End Road, Bitterne. SO18 6TG. 02380422080 before exchange of contracts.

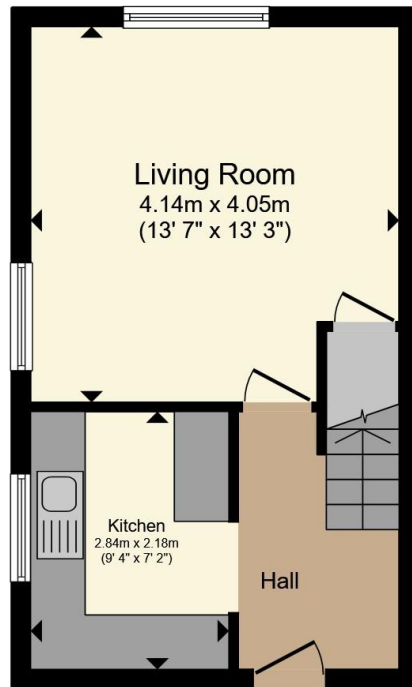
KEY FEATURES

- Two spacious bedrooms
- Excellent renovation project
- Great potential to add value
- Well-proportioned layout
- Kitchen and bathroom requiring updating
- Popular Midanbury location

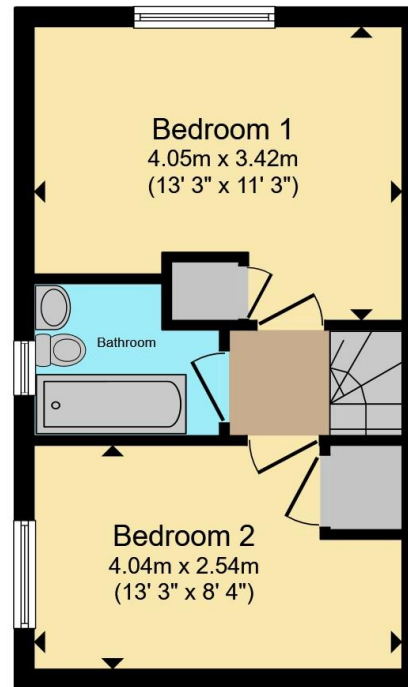








Ground Floor



First Floor

Total floor area 57.3 m² (617 sq.ft.) approx

This floor plan is for illustrative purposes only. It is not drawn to scale. Any measurements, floor areas (including any total floor area), openings and orientation are approximate. No details are guaranteed, they cannot be relied upon for any purpose and they do not form part of any agreement. No liability is taken for any error, omission or misstatement. A party must rely upon its own inspection(s). Powered by www.propertybox.io



To view this property please contact Connells on

T 02380 422080
E Bitterne@connells.co.uk

2 West End Road Bitterne
 SOUTHAMPTON SO18 6TG

EPC Rating: C Council Tax Band: A

Service Charge: 225.64 Ground Rent: 10.00

Tenure: Leasehold

view this property online connells.co.uk/Property/BTN107671

This is a Leasehold property with details as follows; Term of Lease 125 years from 25 May 1990. Should you require further information please contact the branch. Please Note additional fees could be incurred for items such as



1. MONEY LAUNDERING REGULATIONS Intending purchasers will be asked to produce identification documentation at a later stage and we would ask for your co-operation in order that there will be no delay in agreeing the sale. 2. These particulars do not constitute part or all of an offer or contract. 3. The measurements indicated are supplied for guidance only and as such must be considered incorrect. Potential buyers are advised to recheck measurements before committing to any expense. 4. We have not tested any apparatus, equipment, fixtures, fittings or services and it is in the buyers interest to check the working condition of any appliances.

Connells Residential is registered in England and Wales under company number 1489613, Registered Office is Cumbria House, 16-20 Hockliffe Street, Leighton Buzzard, Bedfordshire, LU7 1GN. VAT Registration Number is 500 2481 05.

See all our properties at www.connells.co.uk | www.rightmove.co.uk | www.zoopla.co.uk

Property Ref: BTN107671 - 0003