



## Goswell Road, EC1V

£625,000

Set within an impressive former printing works in the heart of Clerkenwell, this beautifully bright warehouse apartment offers generous living space, dual-aspect Crittall windows, excellent natural light and generous proportions. The home perfectly balances industrial charm with modern comfort. Located on the first floor, the apartment boasts a spacious reception room ideal for both relaxing and entertaining, a generous double bedroom with fitted wardrobes and large windows, a contemporary kitchen, and a sleek, well-appointed bathroom.

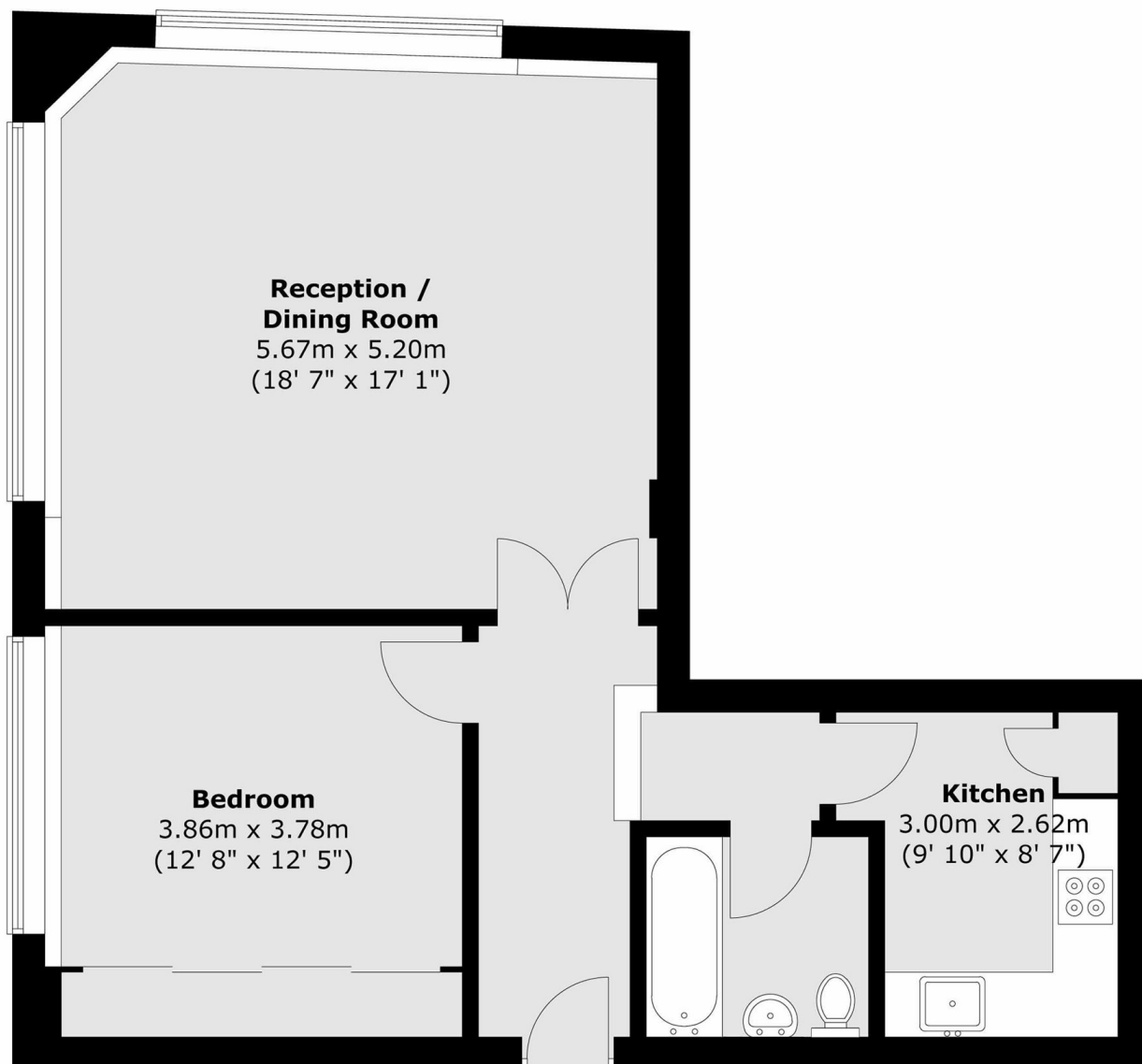
Citybridge House is a characterful warehouse conversion, ideally located within easy walking distance of Angel, Farringdon, Barbican, and Old Street stations, offering excellent transport links. The apartment is moments from the cafés, restaurants, and boutiques of Upper Street, Exmouth Market, and Clerkenwell. Homes of this scale, character, and natural light rarely come to market in such a desirable

### Features

Warehouse Conversion  
Large One Bedroom  
690 Square Feet  
Lift Access  
First Floor

# Goswell Road, London, EC1V

## First Floor



Total area (approx.) : 64.1 sq. m (690 sq. ft)