



📍 The Old School House, 39a The Pound, Bromham, Wiltshire, SN15 2HF

🏠 £290,000

A unique and characterful 2-bedroom semi-detached home in a sought after Wiltshire Village.

- 2 double bedrooms
- Semi-detached home
- Sought after village of Bromham
- Unique and characterful
- Easy to maintain and pretty garden
- Adjacent on street parking available
- Wood burner in reception room
- Immaculately presented

🏠 Freehold

🏠 EPC Rating D



A charming and characterful cottage forming part of the historic conversion of the former Bromham School, located in the heart of this highly regarded village and enjoying a delightful south-facing garden. With countryside walks close at hand and a wealth of original features throughout, the property offers a wonderful blend of period charm and modern comfort.

The accommodation begins with a welcoming kitchen featuring original tiled flooring and an impressive ceiling height, creating a bright and airy first impression. Subject to the necessary consents, there may also be potential to extend above this area. Beyond lies a well-proportioned sitting room, centred around a recently installed wood burning stove, with a versatile adjoining space currently utilised as a dining/study area. A modern family bathroom completes the ground floor accommodation.

Upstairs, two generous double bedrooms enjoy an abundance of natural light and showcase many of the property's original timbers and beams, enhancing the cottage's unique character and appeal.

Externally, the private south-facing garden provides a wonderful outdoor retreat, beautifully planted with a variety of mature shrubs and colourful borders. It offers a peaceful setting for relaxing and enjoying.

The property benefits from gas fired central heating, complemented by the warmth and character of the wood burner, together with a mixture of double glazing. Unrestricted on-street parking directly opposite the property.

A delightful village home, full of charm and character, equally suited as a permanent residence, weekend retreat or investment opportunity.

#### **Situation**

Bromham is a popular village with a thriving community. Local facilities include a primary school, a public house, community centre with social club, a butchers shop, village shop and a church. The historic market town of Devizes is close by providing town centre shopping, transport and leisure facilities, theatre, museum and thriving weekly market. The Kennet and Avon canal runs through Devizes and also provides walking and fishing facilities. The major centres of Bath, Chippenham, Salisbury, Swindon and Marlborough are all within a thirty mile radius.

#### **Property information**

We are advised all mains services are connected.

Tenure: Freehold

EPC rating: D

Council tax band: C



# The Pound, Bromham, Chippenham, SN15

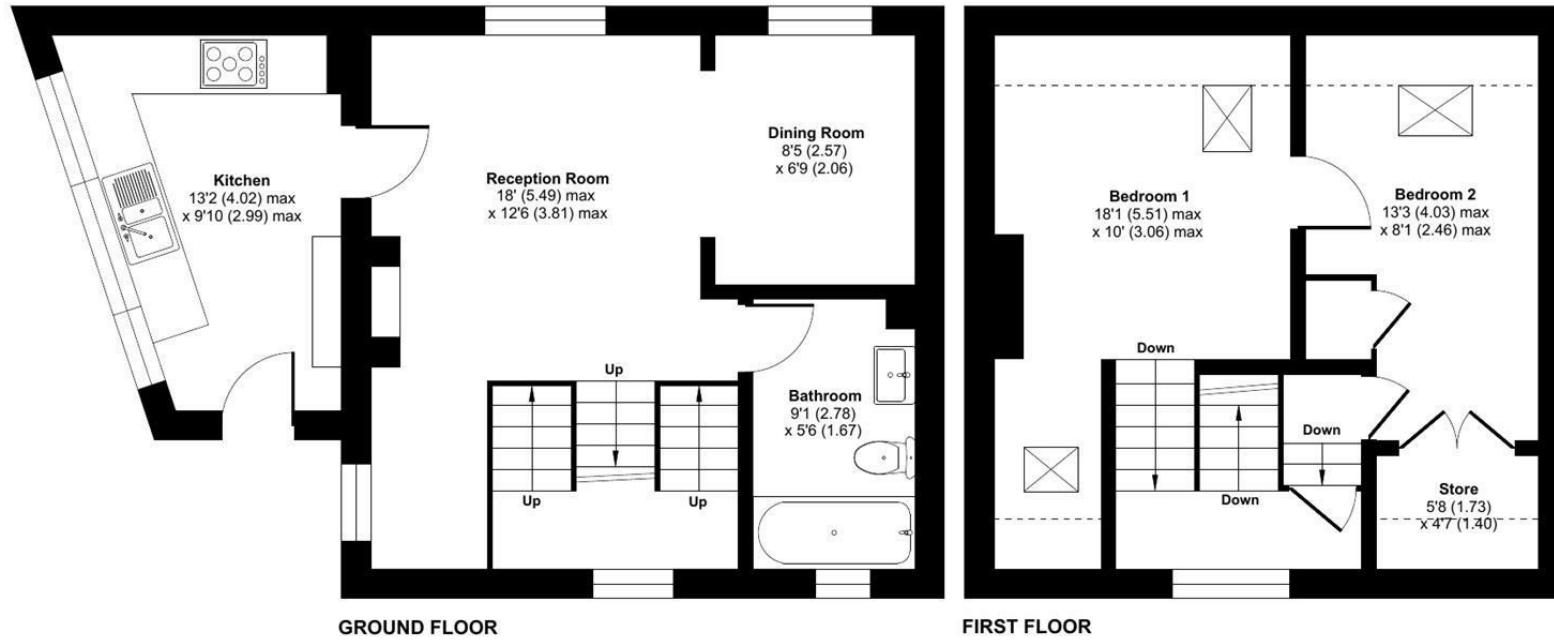
Approximate Area = 729 sq ft / 67.7 sq m

Limited Use Area(s) = 46 sq ft / 4.2 sq m

Total = 775 sq ft / 72 sq m

For identification only - Not to scale

Denotes restricted  
head height



Floor plan produced in accordance with RICS Property Measurement 2nd Edition, Incorporating International Property Measurement Standards (IPMS2 Residential). © nctchecom 2026. Produced for Strakers. REF: 1463557

Disclaimer These particulars, whilst believed to be accurate are set out as a general outline only for guidance and do not constitute any part of an offer or contract. Intending purchasers should not rely on them as statements of representation of fact, but must satisfy themselves by inspection or otherwise as to their accuracy. No person in this firm's employment has the authority to make or give any representation or warranty in respect of the property. All measurements and distances are approximate only. Your home is at risk if you do not keep up repayments on a mortgage or other loan secured on it.