



House - Mid Terrace

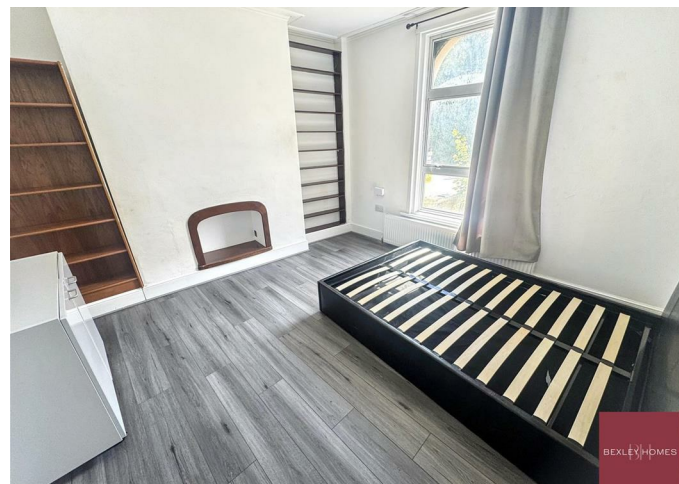
56 MILTON  
ROAD,  
GRAVESEND,  
DA12 2PJ

Per Month

£3,500

### FEATURES

- 6 generously sized bedrooms
- 2 bathrooms
- Suitable for company let arrangements
- Excellent transport links
- Residential location with local amenities nearby
- Licensed 5-bedroom HMO



BEXLEY HOMES

# 6 Bedroom House – Mid Terrace located in Gravesend

A spacious and well-presented 5-bedroom licensed HMO located in a popular residential area of Gravesend, available immediately for company let.

The property comprises five good-sized bedrooms, two bathrooms, and a generous communal living room, making it ideal for supported living providers, contractor accommodation companies, healthcare providers, relocation businesses, and corporate housing operators.

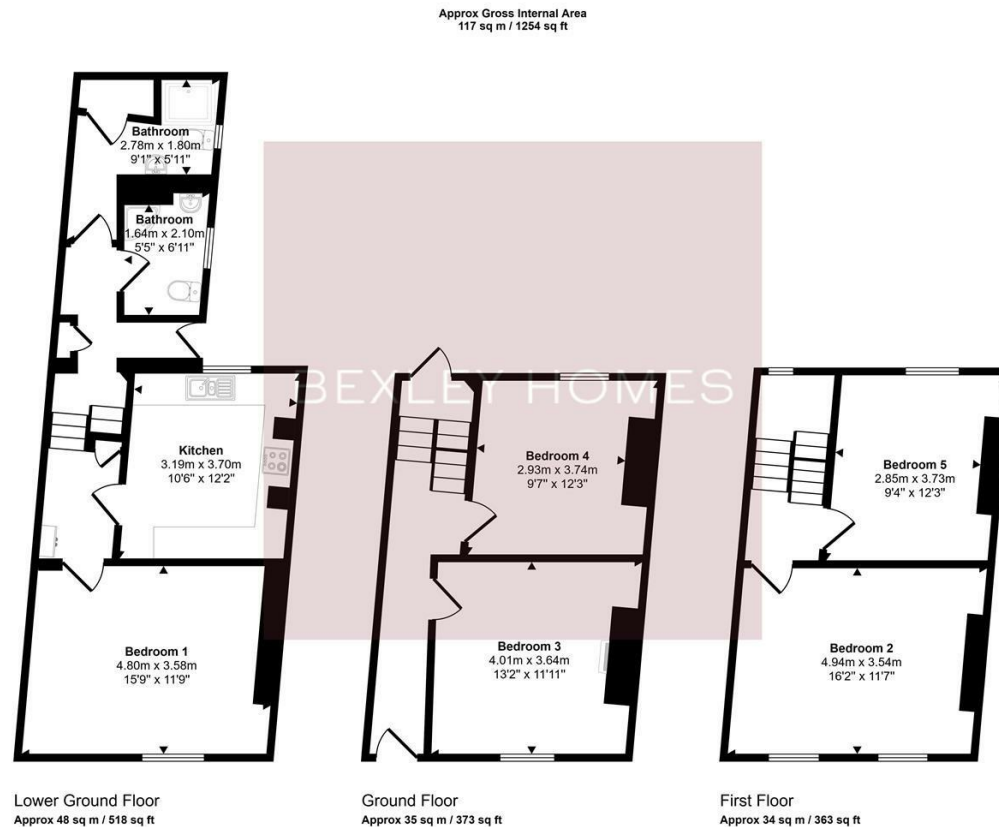
Located on Milton Road, the property benefits from a highly accessible position within Gravesend. Gravesend Railway Station is approximately 0.6 miles away, providing direct rail connections to London and Kent. Ebbsfleet International is also a short drive away, offering high-speed services to London St Pancras. The area is well served by local bus routes, with bus stops located moments from the property.

The property is conveniently positioned for access to:  
Gravesend Town Centre

Call us on  
01322 948500

Belvedere@bexleyhomes.co.uk  
www.bexleyhomes.co.uk

Council Tax Band  
D



This floorplan is only for illustrative purposes and is not to scale. Measurements of rooms, doors, windows, and any items are approximate and no responsibility is taken for any error, omission or mis-statement. Icons of items such as bathroom suites are representations only and may not look like the real items. Made with Made Snappy 360.

Energy Efficiency Rating		Current	Potential
Very energy efficient - lower running costs			
(92 plus) A			
(81-91) B			
(69-80) C			
(55-68) D		70	
(39-54) E			
(21-38) F			
(1-20) G			
Not energy efficient - higher running costs			
<b>England &amp; Wales</b>		EU Directive 2002/91/EC	

Agents Note: Whilst every care has been taken to prepare these particulars, they are for guidance purposes only. All measurements are approximate and are for general guidance purposes only and whilst every care has been taken to ensure their accuracy, they should not be relied upon and potential buyers are advised to recheck the measurements.

BEXLEY HOMES