



Rochester Row, SW1P

£545,000

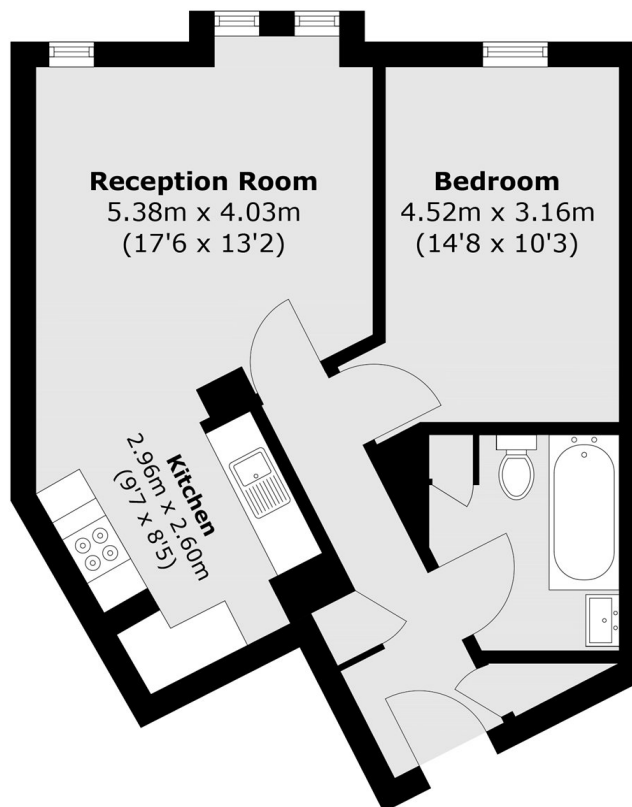
A generously proportioned modern one bed apartment with open plan living in Westminster.

Rochester Row is perfectly located by Vauxhall Bridge Road, providing quick access to Victoria and Vauxhall train stations. It further benefits from a variety of affluent shops, restaurants and attractions.

Features

Close Transport Links
One Bedroom
Second Floor
Concierge
Parking
Lift

Rochester Row, London, SW1P



Total area (approx.): 51.4 sq. m (553.2 sq. ft)