

OVER 60?

Secure this property
for up to **59% less!**



Price

£350,000

Freehold

3x  2x  1x 

Keymer Avenue, Peacehaven, East Sussex,

BN10

cubitt & west
Helping you move forwards



Main features

- Bright and airy home in a great location
- Extended lounge/diner providing lots of natural light
- Ensuite bathroom to bedroom 1
- Safe and secure rear garden
- Nice sized driveway and front garden

Accommodation

GROUND FLOOR

Entrance Hallway

Bedroom 2: 11'9 x 11'8 (3.58m x 3.56m)

Bedroom 3: 10'9 x 8'3 (3.28m x 2.52m)

Bathroom

Kitchen: 10'9 x 8'4 (3.28m x 2.54m)

Lounge/Diner: 14'4 x 9'9 (4.37m x 2.97m)
plus 12'4 x 7'8 (3.76m x 2.34m)

FIRST FLOOR

Landing

Bedroom 1: 11'9 x 11'4 (3.58m x 3.46m)

Eaves

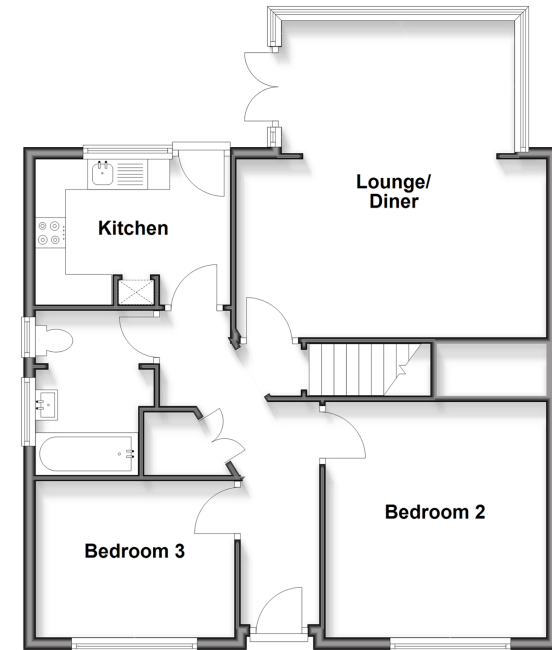
Ensuite Shower Room

OUTSIDE

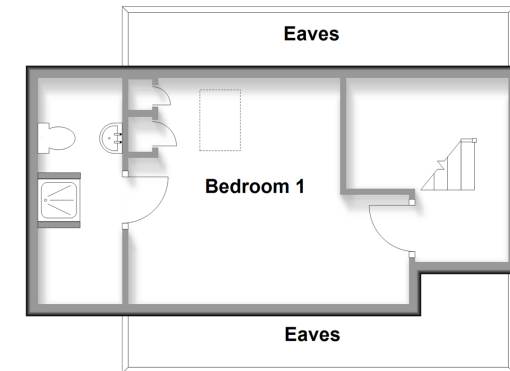
Front and rear gardens

Driveway

Ground Floor
Approx. 75.4 sq. metres (812.1 sq. feet)



First Floor
Approx. 28.0 sq. metres (301.5 sq. feet)



Call Peacehaven - 01273 584511 ■ cubittandwest.co.uk

- A private rental licensing scheme applies to some properties in this area, please check with the Local Authority before proceeding
- Legal advice should be taken to verify fixtures/fittings, planning, alterations and/or lease details
- Appliances & services are untested, dimensions are approximate and floor plans are not to scale
- Through a Homewise Home For Life Plan people aged 60+ can secure this property for up to 59% less, by purchasing a Lifetime Lease



31811201/20260114/DGK/DGK