



1-1a Hill Street, Southport, PR9 0PE

£10,000 Per Annum

Nestled just off the bustling Lord Street in Southport, this well-appointed commercial property on Hill Street presents an excellent opportunity for prospective business owners. The double fronted retail accommodation boasts a prominent position, ensuring high visibility and foot traffic, which are essential for any thriving enterprise.

Previously fitted as a beauty salon, the space is versatile and can easily be adapted for various other uses, making it an attractive option for a range of businesses. The interior is designed to create a welcoming atmosphere, ideal for both clients and staff alike.

With a current rateable value of £9,400, this property offers an opportunity in a vibrant area known for its charming seaside appeal and strong local economy. Whether you are looking to establish a new venture or expand an existing one, this location provides the perfect backdrop for success.

Do not miss the chance to secure this prime retail space in Southport, where your business can flourish in a community that values quality and service.

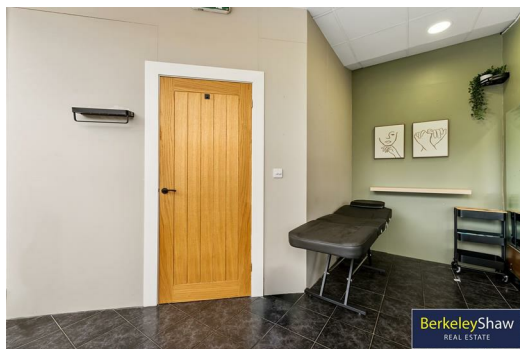


Energy Efficiency Rating		
	Current	Potential
Very energy efficient - lower running costs		
(92 plus) A		
(81-91) B		
(69-80) C		
(55-68) D		
(39-54) E		
(21-38) F		
(1-20) G		
Not energy efficient - higher running costs		
England & Wales	EU Directive 2002/91/EC	

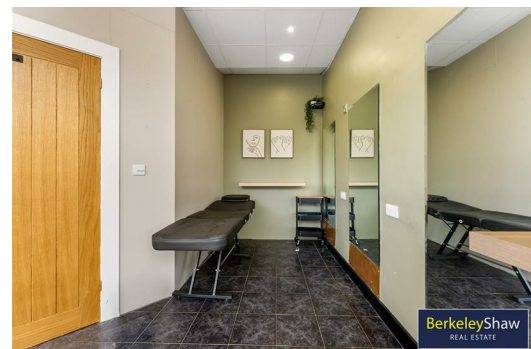
Environmental Impact (CO ₂) Rating		
	Current	Potential
Very environmentally friendly - lower CO ₂ emissions		
(92 plus) A		
(81-91) B		
(69-80) C		
(55-68) D		
(39-54) E		
(21-38) F		
(1-20) G		
Not environmentally friendly - higher CO ₂ emissions		
England & Wales	EU Directive 2002/91/EC	



BerkeleyShaw
REAL ESTATE



BerkeleyShaw
REAL ESTATE



BerkeleyShaw
REAL ESTATE



Berkeley Shaw Estate Agents Limited.
Company No. 0784754

Berkeley Shaw Real Estate Limited.
Company No. 05206927

