

Warwick Drive, SW15

£2,600 Per calendar month

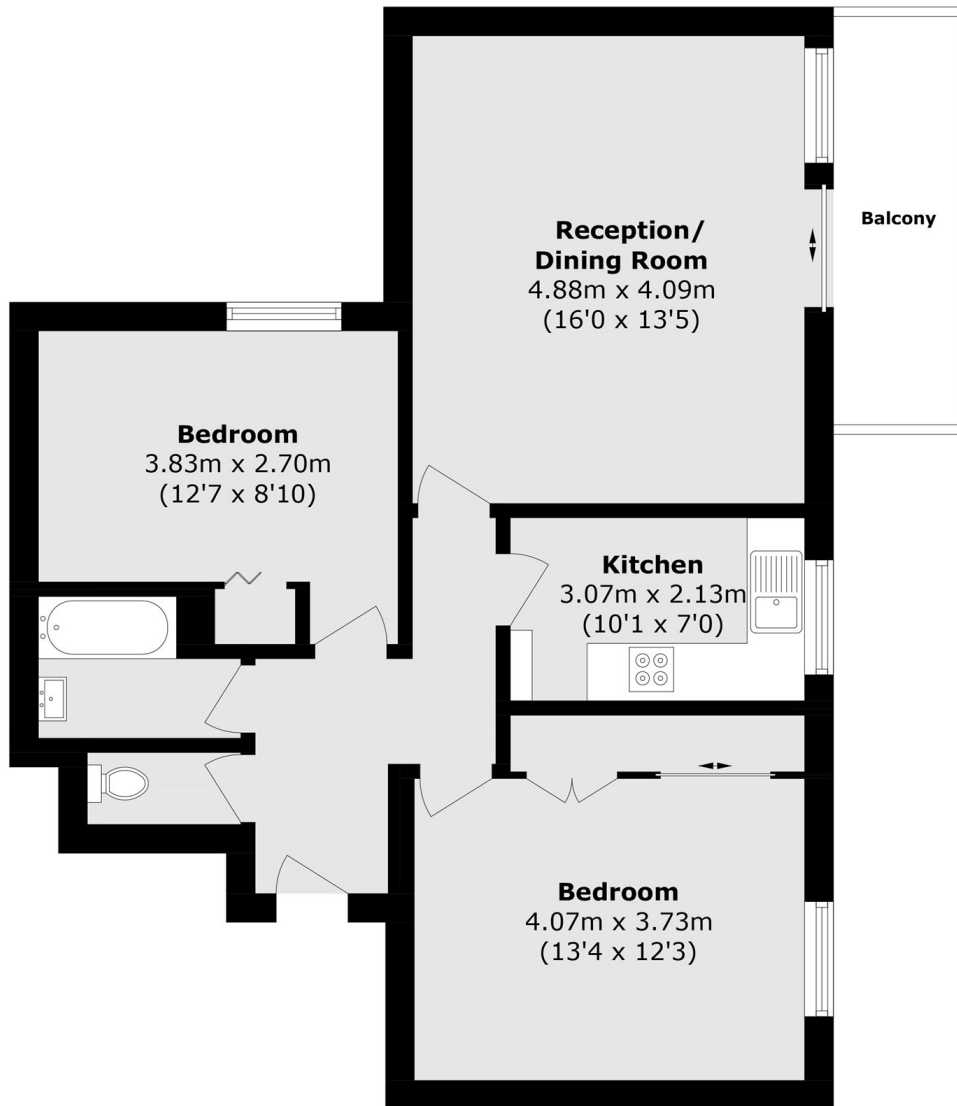
This third floor apartment with private balcony has two well-proportioned double bedrooms with built-in wardrobes, a separate kitchen, bathroom and separate WC. The property also benefits from a private garage.

March Court is situated just off the Upper Richmond Road, less than a mile to Putney High Street Train Station and less than half a mile to Barnes Train Station.

Features

- Two Bedrooms
- Private Balcony
- One Bathroom
- Private Garage

Warwick Drive,
London, SW15



Total area (approx.): 65.3 sq. m (702.8 sq. ft)

Balcony area (approx.): 5.6 sq. m (60.2 sq. ft)