



Withybed Close | | Newport | PO30 5RJ

Offers In The Region Of £300,000



Withybed Close | Newport | PO30 5RJ Offers In The Region Of

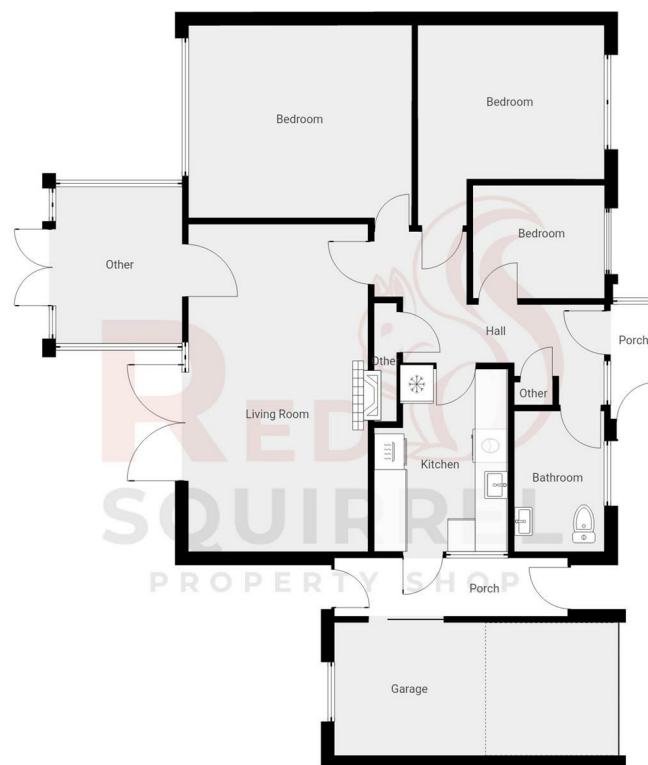
Nestled in the tranquil area of Withybed Close, Newport, this charming detached bungalow offers a delightful living experience. Spanning an impressive 1,097 square feet, the property boasts three well-proportioned bedrooms, making it an ideal home for families or those seeking extra space. The bungalow features a comfortable reception room, perfect for relaxing or entertaining guests.

Constructed in 1967, this residence combines classic charm with modern potential, allowing you to personalise it to your taste. The single bathroom is conveniently located, catering to the needs of the household.

Surrounded by a peaceful neighbourhood, this bungalow provides a serene retreat while still being within easy reach of local amenities and transport links. Whether you are looking to settle down or invest in a property with great potential, this bungalow in Withybed Close is a wonderful opportunity not to be missed.

- 3 SPACIOUS BEDROOMS
- MODERN BATHROOM
- 1 RECEPTION ROOM
- 1,097 sq ft AREA
- QUIET WITHYBED CLOSE
- IDEAL FAMILY HOME

- Hallway**
10'5" x 13'9" (3.17 x 4.2)
- Bedroom 1**
12' x 13'5" (3.66 x 4.08)
- Bathroom**
8'5" x 5'5" (2.57 x 1.64)
- Living Room**
19'8" x 10'9" (5.99 x 3.28)
- Bedroom 3**
6'9" x 7'11" (2.06 x 2.41)
- Conservatory**
9'5" x 7'7" (2.87 x 2.31)
- Kitchen**
10'11" x 8' (3.34 x 2.45)
- Garden Rear**
- Bedroom 2**
12' x 11'2" (3.66 x 3.41)
- Front Garden**



Energy Efficiency Rating		Current	Potential
Very energy efficient - lower running costs			
(92 plus)	A		
(81-91)	B		
(69-80)	C		
(55-68)	D		
(39-54)	E	46	60
(21-38)	F		
(1-20)	G		
Not energy efficient - higher running costs			
England & Wales		EU Directive 2002/91/EC	

Council Tax Band **D**
EPC Rating **E**

3 Langely Court Pyle Street
Newport
Isle of Wight
PO30 1LA
01983 521212

enquiries@redsquirrelpropertyshop.co.uk
www.redsquirrelpropertyshop.co.uk

THIS FLOOR PLAN IS PROVIDED WITHOUT WARRANTY OF ANY KIND. SENSOPHA DISCLAIMS ANY WARRANTY INCLUDING, WITHOUT LIMITATION, SATISFACTORY QUALITY, ACCURACY OF DIMENSIONS.