



St. Marys Gardens | London | SE11

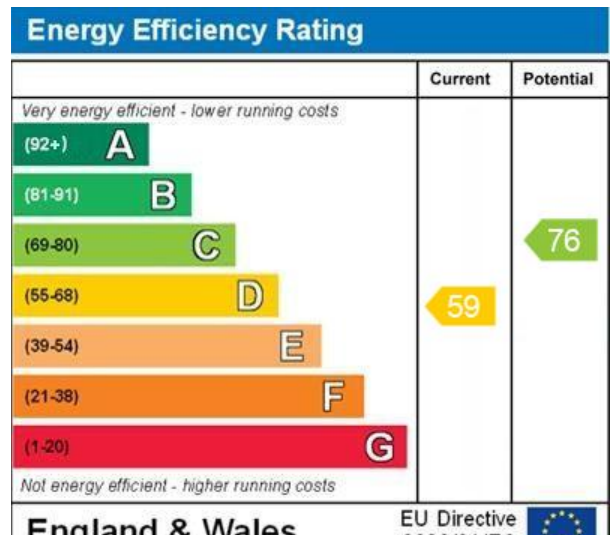
Freehold

£1,500,000

- Four double bedrooms
- Town House
- Private garden
- Recently redecorated
- Georgian Square
- Chain free
- Local amenities
- Waterloo
- Southbank
- Lambeth North



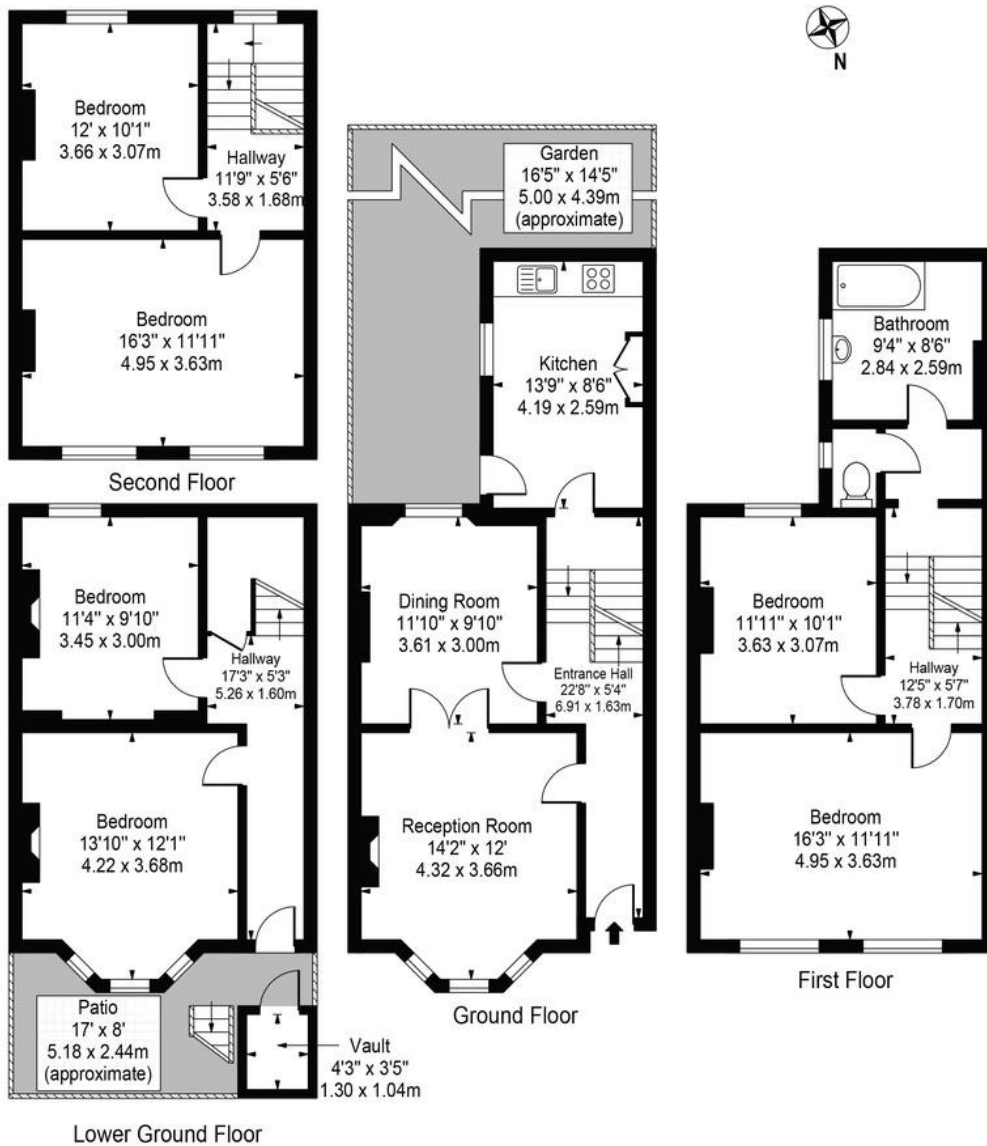
A substantial five-storey Georgian end of terrace house overlooking the sought after St Marys gardens, offering an exciting opportunity to create a superb long term family home in one of the area's most desirable locations. Full of period character and generous proportions throughout, the property offers flexible living space across five floors, including multiple reception rooms, kitchen and dining area with access to the garden, and four spacious bedrooms. With excellent natural light and impressive original features, the house provides huge scope for refurbishment and modernisation. St Marys Gardens is a beautiful Georgian square ideally positioned close to Waterloo, Lambeth North and the South Bank, with excellent transport connections across London. The area is well known for its green spaces,



St. Marys Garden, SE11 4UF

Approx. Gross Internal Area 1801 Sq Ft - 167.32 Sq M
(Excluding Vault)

Approx. Gross Internal Area Of Vault 15 Sq Ft - 1.35 Sq M



For Illustration Purposes Only - Not To Scale

This floor plan should be used as a general outline for guidance only and does not constitute in whole or in part an offer or contract. Any intending purchaser or lessee should satisfy themselves by inspection, searches, enquiries and full survey as to the correctness of each statement. Any areas, measurements or distances quoted are approximate and should not be used to value a property or be the basis of any sale or let.

Viewing Arrangements

Strictly by appointment

Contact Details

121 Denmark Hill

London

SE5 8EN

www.urbanvillagehomes.co.uk

sales@urbanvillagehomes.com

020 3519 9121

Agents Note: Whilst every care has been taken to prepare these sales particulars, they are for guidance purposes only. All measurements are approximate and for general guidance purposes only and whilst every care has been taken to ensure their accuracy, they should not be relied upon and potential buyers are advised to recheck the measurements