

EDEN MIDCALF
— SALES & LETTINGS —

£399,950
Cedar Gardens

Kinver, DY7 6BW

PROPERTY SUMMARY

A thoughtfully improved three / four bedroom detached dormer bungalow within this popular cul-de-sac in historic Kinver village. Offering spacious, bungalow-style ground floor accommodation, together with three first floor bedrooms, a driveway, garage and a landscaped rear garden. Available with no upward chain. EPC=D

4

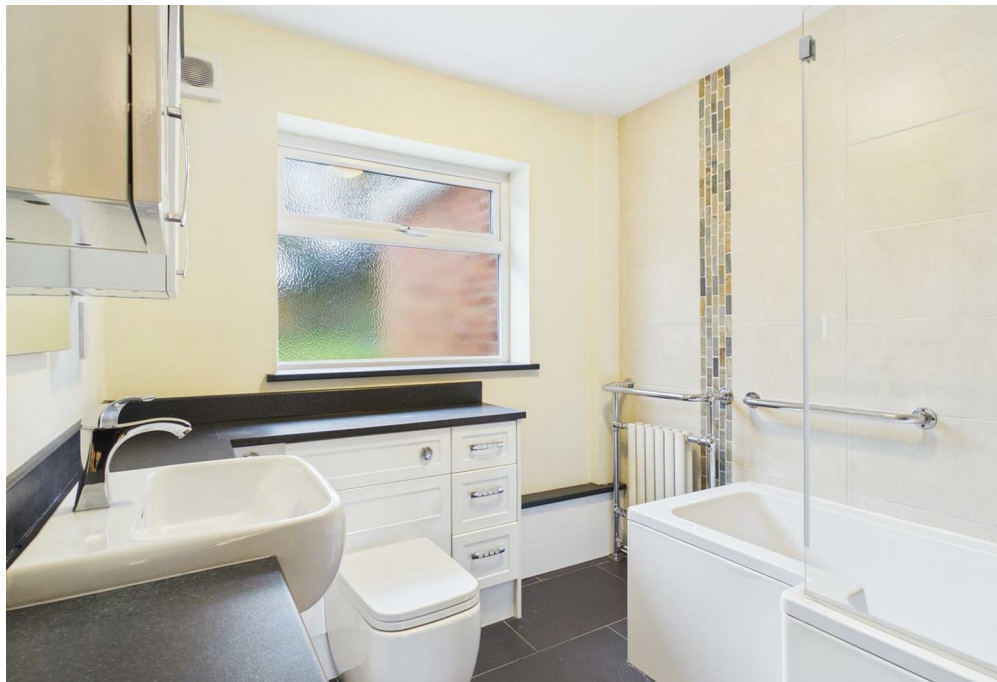


1



2







Approximate total area⁽¹⁾
 1334 ft²
 123,9 m²

(1) Excluding balconies and terraces

GIRAFFE360

LOCAL AUTHORITY


TENURE
 Freehold

COUNCIL TAX BAND
 E

VIEWINGS
 By prior appointment only

Energy Efficiency Rating		
	Current	Potential
<i>Very energy efficient - lower running costs</i>		
(92 plus) A		
(81-91) B		
(69-80) C		76
(55-68) D	56	
(39-54) E		
(21-38) F		
(1-20) G		
<i>Not energy efficient - higher running costs</i>		
England & Wales	EU Directive 2002/91/EC	

Agents Note: Whilst every care has been taken to prepare these particulars, they are for guidance purposes only. All measurements are approximate and are for general guidance purposes only and whilst every care has been taken to ensure their accuracy, they should not be relied upon and potential buyers/tenants are advised to recheck the measurements.



28 High Street
 Kincer
 DY7 6HF

01384 878000
<https://www.edenmidcalf.co.uk/>
 us/