

THO



Kimber Close, Windsor
£3,500 pcm

OSBORNE HEATH



This link-detached house has been finished to an excellent standard throughout, with high quality finishes and plenty of built-in storage.

On the ground floor is a living room, family room, contemporary kitchen with dining area and bi-folding doors out to the rear garden, and a downstairs WC.

The first floor has four bedrooms; all with built-in wardrobes and a family bathroom with a bath and separate shower.

Outside, the front garden has a lawn and driveway with good driveway parking leading to a garage. The rear garden is secluded and has a lawn with a large outdoor alfresco area with good indoor-outdoor flow.

Kimber Close is a small cul-de-sac with nearby access to the Great Park making it an ideal location for families and those who enjoy walking or biking in the outdoors. Windsor has a wide range of shops and restaurants as well as the Castle, Great Park, Racecourse and Legoland. Nearby train stations include Windsor & Eton Central and Windsor & Eton Riverside, giving easy access to London Paddington (via Slough) and London Waterloo. The area is served by a number of well-regarded schools including The Royal School, Oakfield, Queen Anne First School, St Edwards Middle School, Trevelyan, Upton House, Eton, Windsor Boys and Windsor Girls. Windsor is also convenient for the M4, M25, M3 and Heathrow Airport.

Kimber Close

Windsor

- Four bedrooms
- Three Receptions
- Contemporary Kitchen
- Driveway
- Garage
- Secluded Garden
- Cul-De-Sac

Council Tax band: G

Tenure: Freehold

EPC Energy Efficiency Rating: D

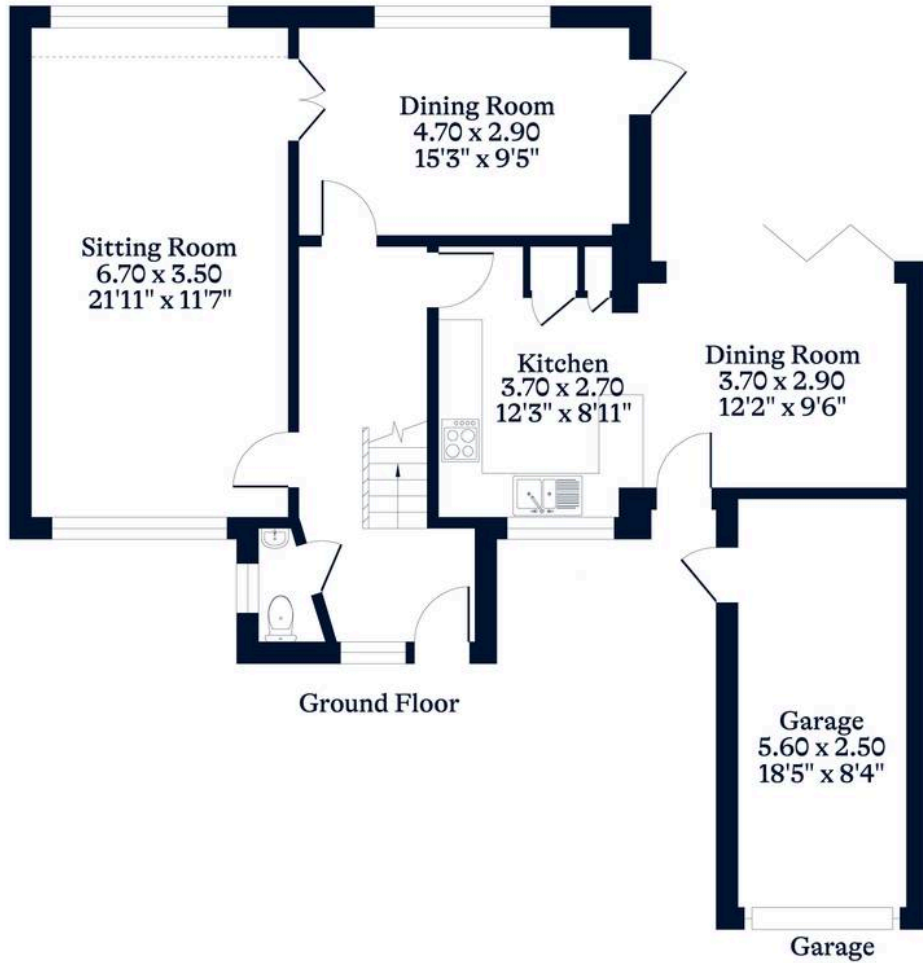
EPC Environmental Impact Rating: D



APPROXIMATE FLOOR AREA
House - 125.81 sq m - 1354 sq ft
Garage - 12.99 sq m - 140 sq ft
Total - 138.80 sq m - 1494 sq ft
(Gross Internal Area)



NOT TO SCALE
This plan is for illustration purposes only



This plan is for layout guidance only. Not drawn to scale unless stated. Windows and door openings are approximate. Whilst every care is taken in the preparation of this plan, please check all dimensions, shapes and compass bearings before making any decisions reliant upon them.